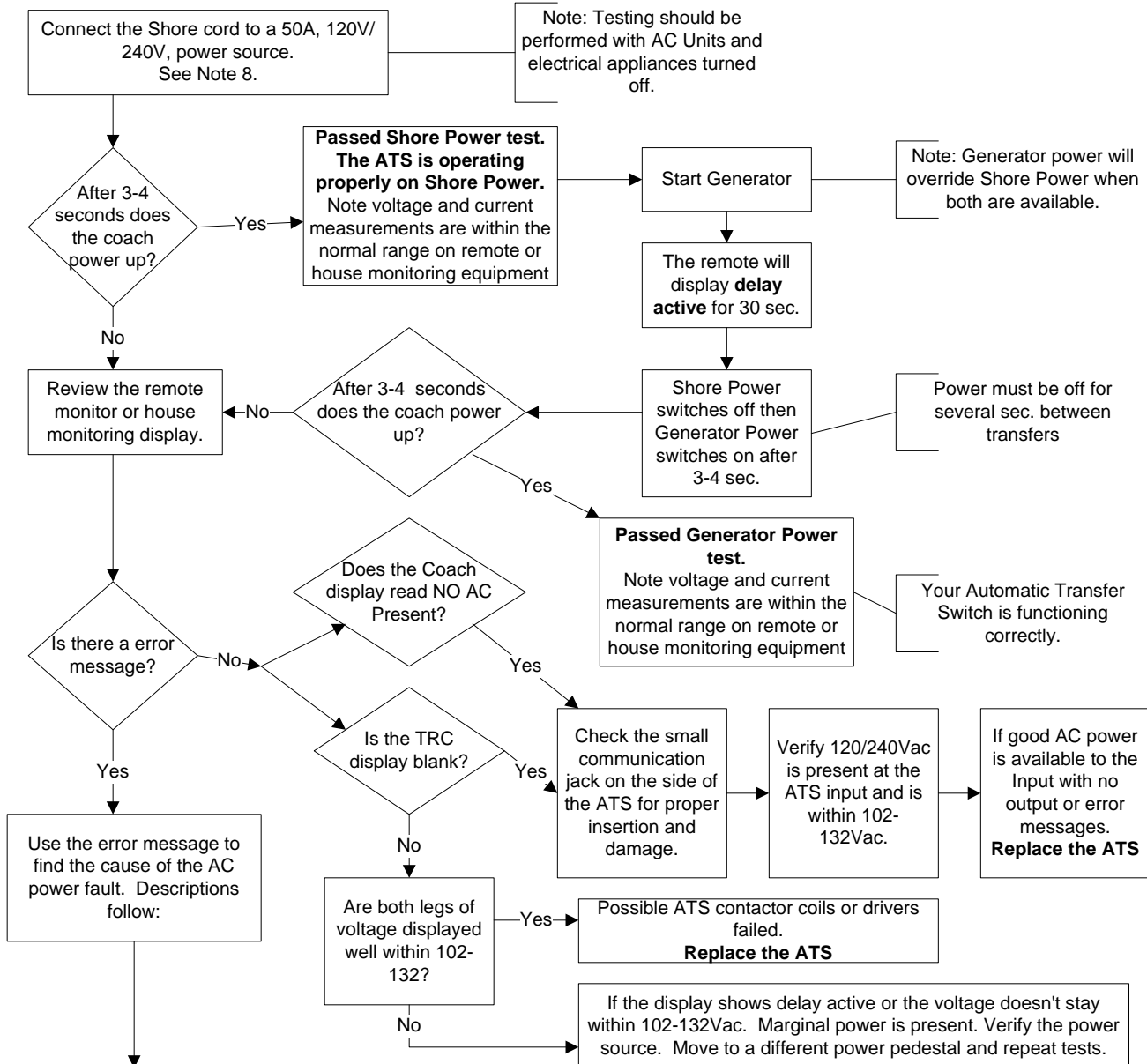


# Surge Guard ATS Troubleshooting Guide

## P/N 41290



- 1. Low Voltage** - If the input voltage drops below 102Vac for more than 8 sec. the power will be removed protecting your electronic equipment. This condition may be caused by overloading the parks power. Try reducing your loads.
- 2. High Voltage** - If the input voltage increases above 132Vac for more than 8sec, power will be removed. In Gen mode, check the voltage regulator. Check for load balance. If one leg of the generator has a heavy load and the other has a light load, it may cause high voltage. High voltage rarely occurs with shore power.
- 3. High or Low Frequency** - Check the generator's regulator.
- 4. Line1, Line2 or Neutral open** - Check all input wiring to the ATS. Check Shr cord. Check wiring on Generator. Replace Receptacle on pedestal. Replace adapter if reducing down to 120V,30A service.
- 5. Open Ground** - Check input wiring to the ATS. Check wiring on Generator. Replace Receptacle on pedestal. Replace adapter if reducing down to 120V,30A service.
- 6. Reverse Polarity** - Check wiring at pedestal. In generator mode, have generator serviced. Do not run.
- 7. Check Surge** - Fuses inside unit have opened. Return ATS to TRC for service. The ATS may be used until service can be arranged.
- 8. Note:** The Surge Guard ATS will also operate properly using a suitable 120V, 30A adapter.

**For additional technical support call 800-780-4324 ext 311**