

Programming Victron MultiPlus 12V 2000Watt Inverter/Charger  
(Must program with a 12V battery)



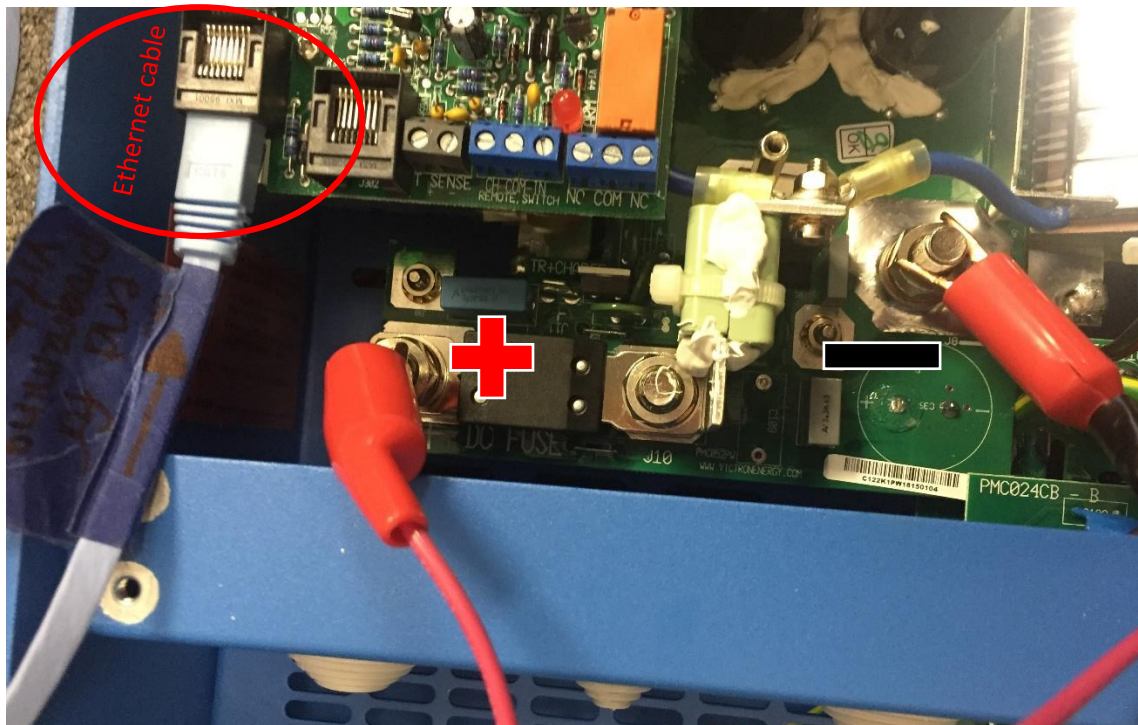
In this guide we wanted to show demonstrate how to program a Victron MultiPlus 12V 2000W Inverter/Charger. Victron products are great paired with our Battle Born Batteries because not only is the quality impressive, most of their components are configurable to work with LiFePO4 batteries.

What you will need to complete this programming –

- At least one 12-volt Battle Born Lithium Deep Cycle Battery or any 12-volt battery
- Computer
- VEConfigure 3 Software (<https://www.victronenergy.com/support-and-downloads/software>) – watch video for installation instructions
- Victron MultiPlus 12V 2000Watt Inverter/Charger
- Ethernet cable
- MK3USB – Victron Interface

## Preparing The MultiPlus for Programming:

When preparing the Victron for programming, remember to connect the Ethernet cable to the input on the far left. We are also going to be putting on the positive and negative connections onto the Victron MultiPlus from the battery (make sure the MultiPlus is switched OFF).

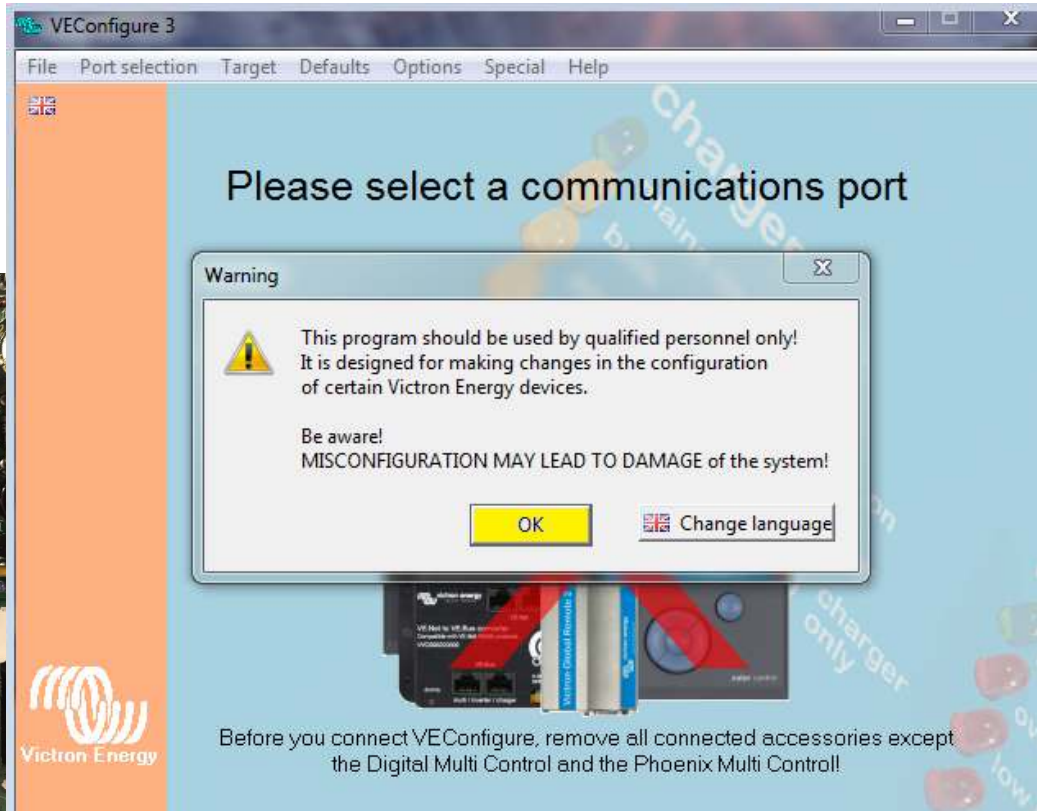


1.

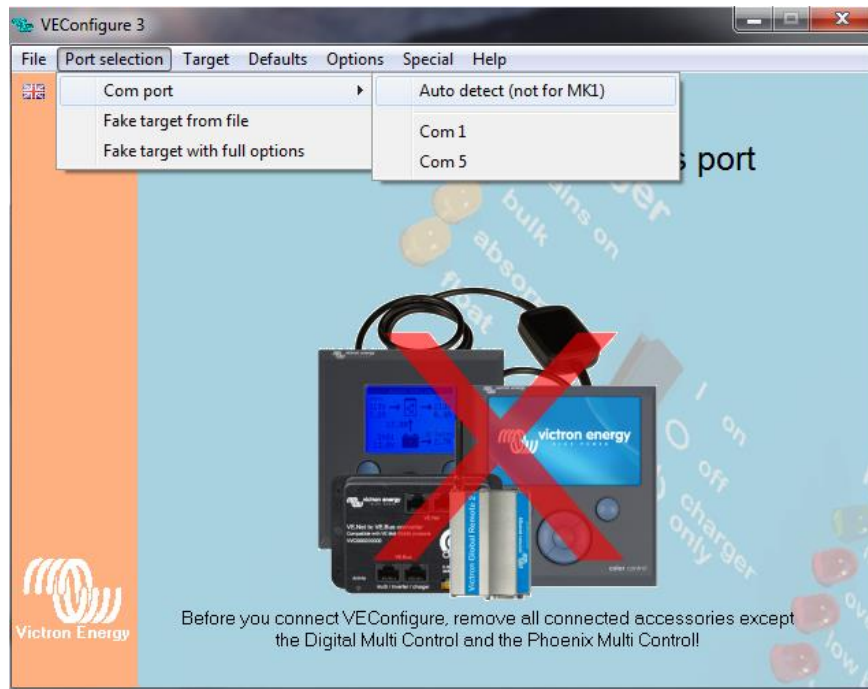
## Steps for Programming:

1. Once you connect your MultiPlus to the computer. Open up the VEConfigure 3 software. This warning sign may appear, if so click “OK”. Make sure that the power switch on your MultiPlus is turned ON.

Note: There should be a red light when turned ON.



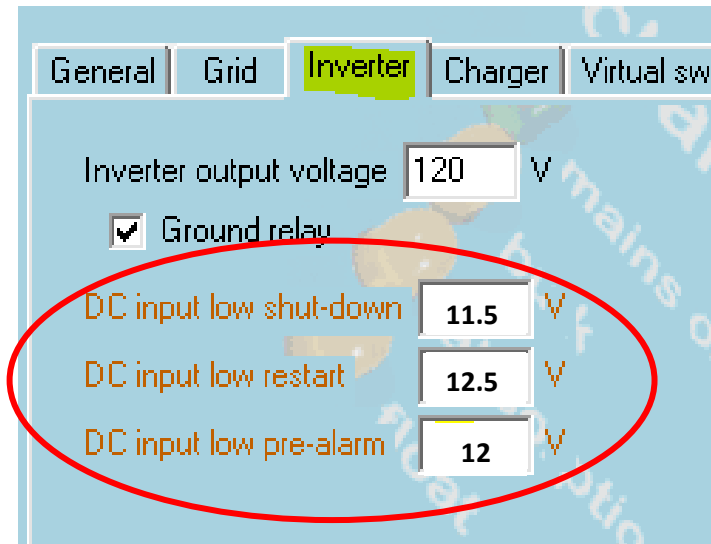
2. Next, on the top right tabs click on **Port Selection > Com Port > Auto Detect**



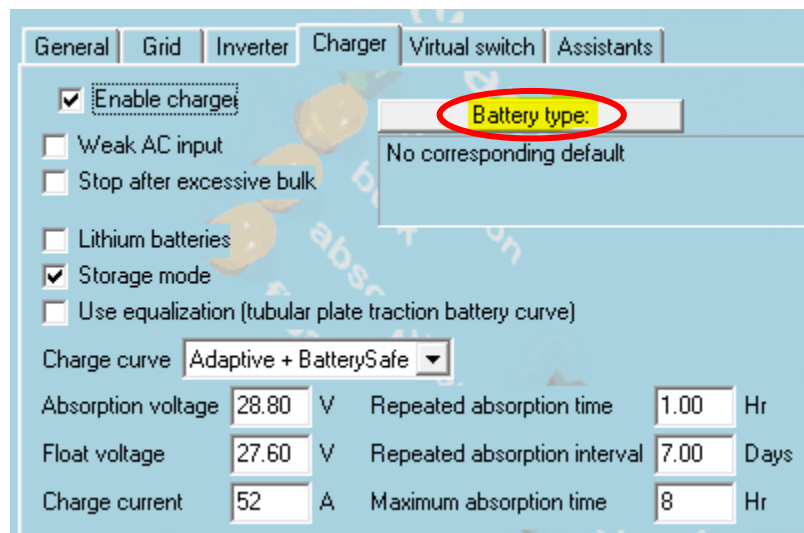
3. If everything is connected correctly, your Multiplus Inverter/Charger should be found.



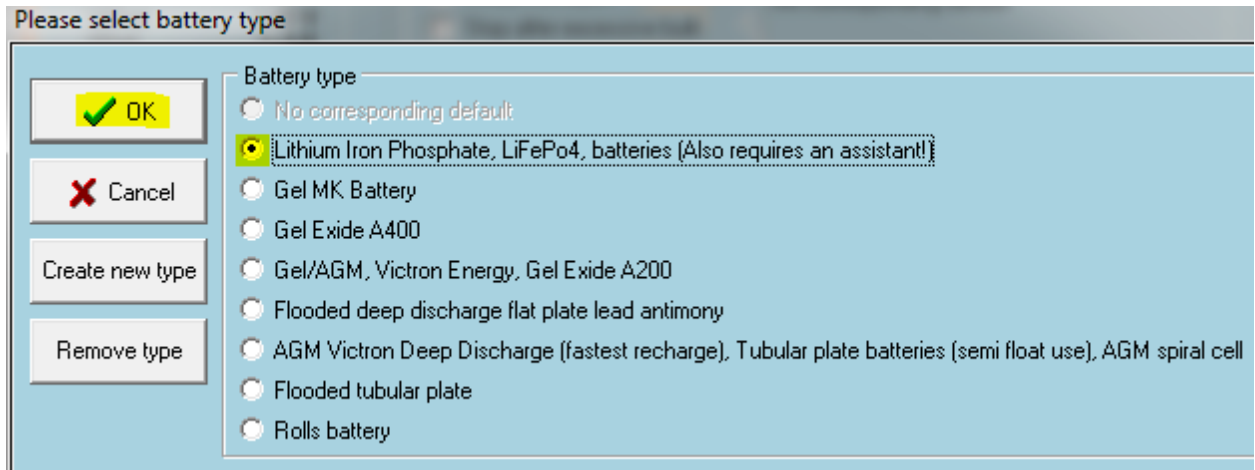
4. Now, click on the “Inverter tab”. Here, you will change the default voltage settings to the following:



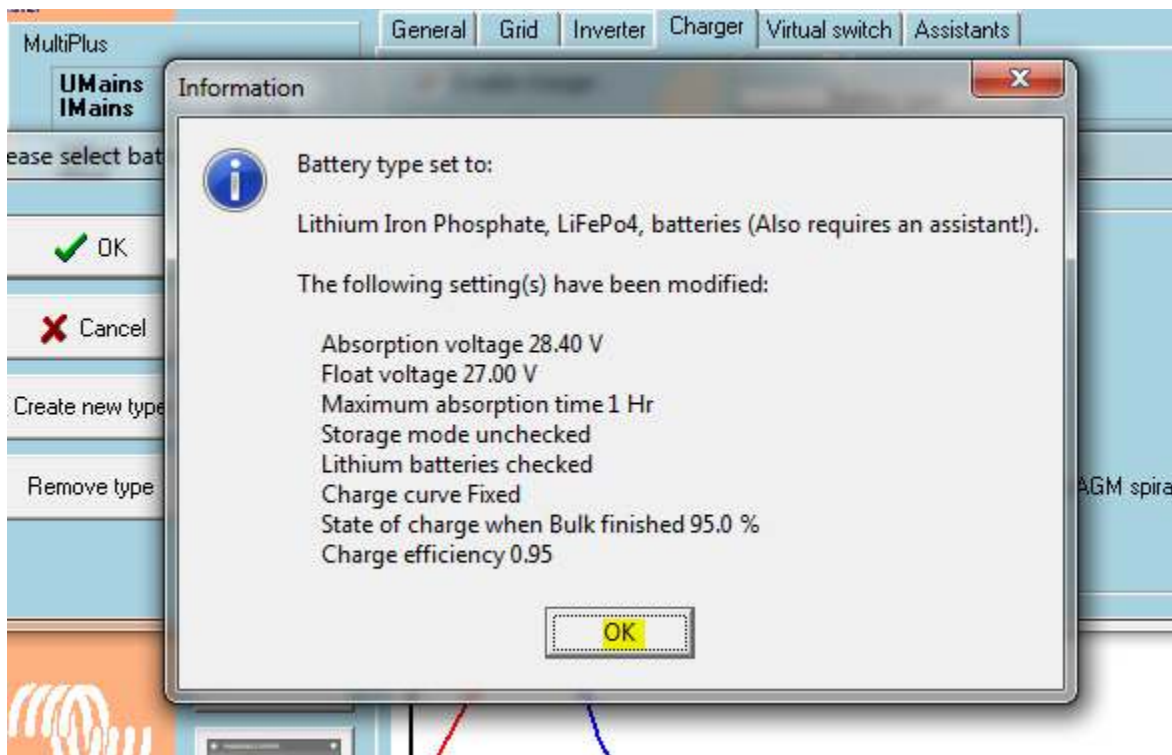
5. That was all for the “Inverter” tab. Now, we move onto the “Charger” tab. For this tab we are going to look for “Battery Type” and click on that.



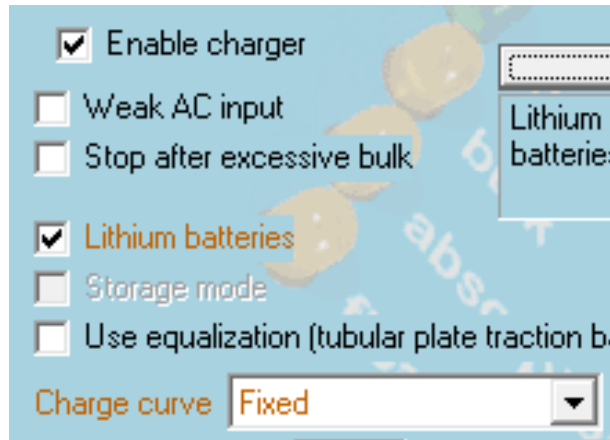
6. Make Sure that you choose “Lithium Iron Phosphate, LiFePO4, batteries” if you are using a Lithium battery for your system. Once Selected, click “OK”.



**It will show you an information box like the one provided on the screen shot below and it will show you all the settings that have been modified. Most of these settings are still default so don't worry, it just has to show this information box when changing to LiFePO4. When you are done confirming, click "OK".**

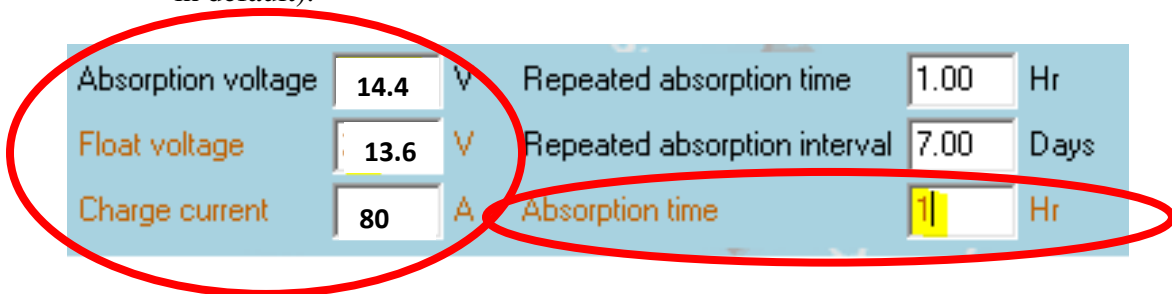


7. Back on the Charger tab make sure that “enable charger” and “lithium batteries” has a check mark. Then the “Charge curve” should say Fixed.

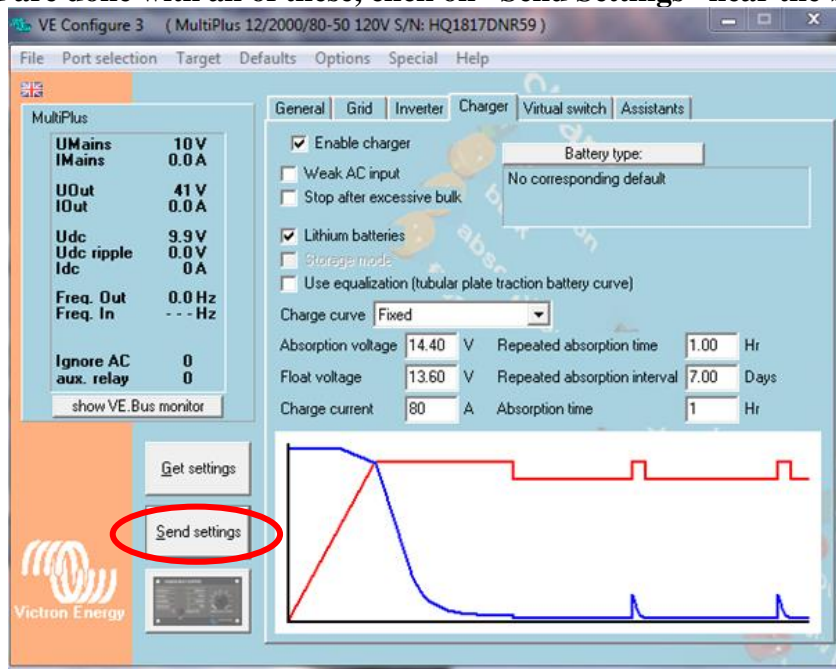


8. Still on the charger tab, adjust these settings:

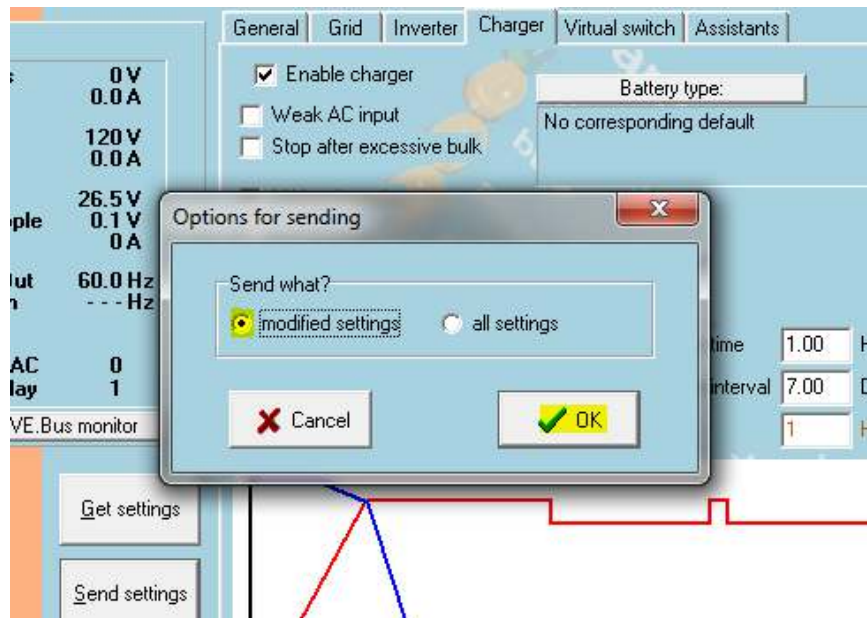
- **Absorption:** 14.4V
- **Float:** 13.6V
- **Charge Current:** 80A
- **Absorption Time:** 30min per battery. (In this case there are two batteries, which would mean we put 1 hour for both. Keep repeated absorption time and interval in default).



9. When you are done with all of these, click on “Send Settings” near the bottom left.

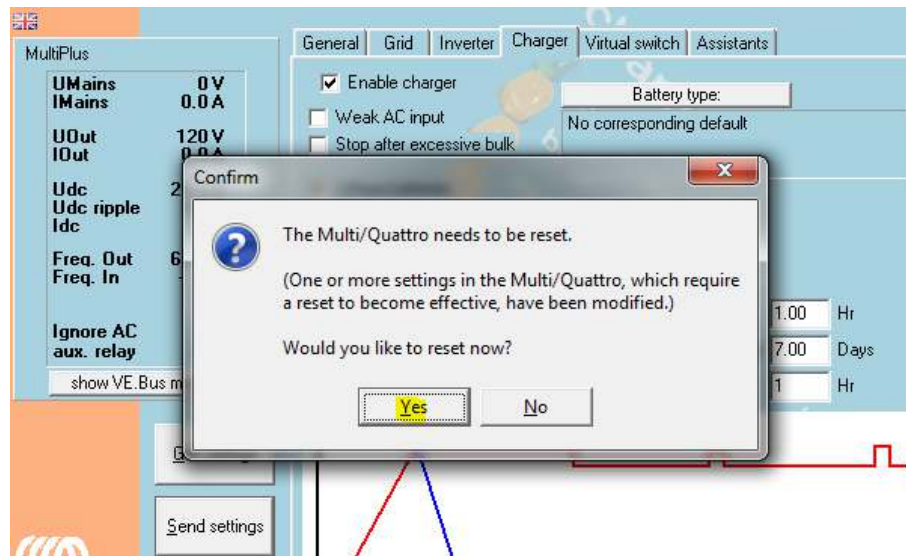


Once you click on that it'll give you the options to send settings. Select modified settings then click “OK”.

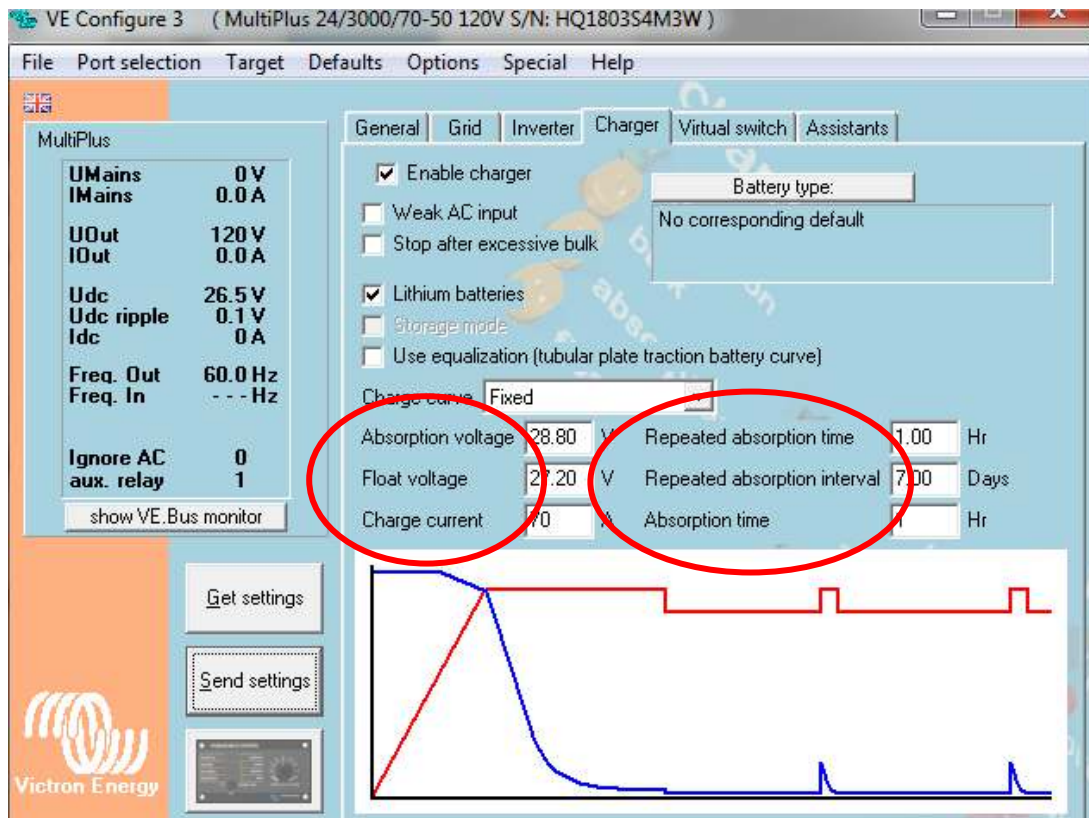




10. It'll ask you to confirm by clicking "YES" to reset the MultiPlus. You should hear a faint clicking noise coming from the inverter charger once restarted (the red light will also flash once).



When you open up the software after resetting the MultiPlus, you will notice that all the lettering is in black for the settings, opposed to their gold color in number 9.



.....

Your modified settings should now be programmed and saved!

Please remember to turn OFF the Victron MultiPlus and if you have your Victron connected onto your system already, then there is no need to do anything else but disconnect the USB connections.

If you are programming your Victron but still need to install, turn off the inverter/charger, then disconnect the positive, negative, and USB connections.

.....

This product and many others can be pre-programmed for you as long as you let us know when placing an order. For any more questions you may have on this Victron Multiplus or any other inverter charger, please send us an email at [info@battlebornbatteries.com](mailto:info@battlebornbatteries.com) or give us a call at 855-292-2831. We enjoy helping our customers get their system working properly in order to get out there and stay out there!

