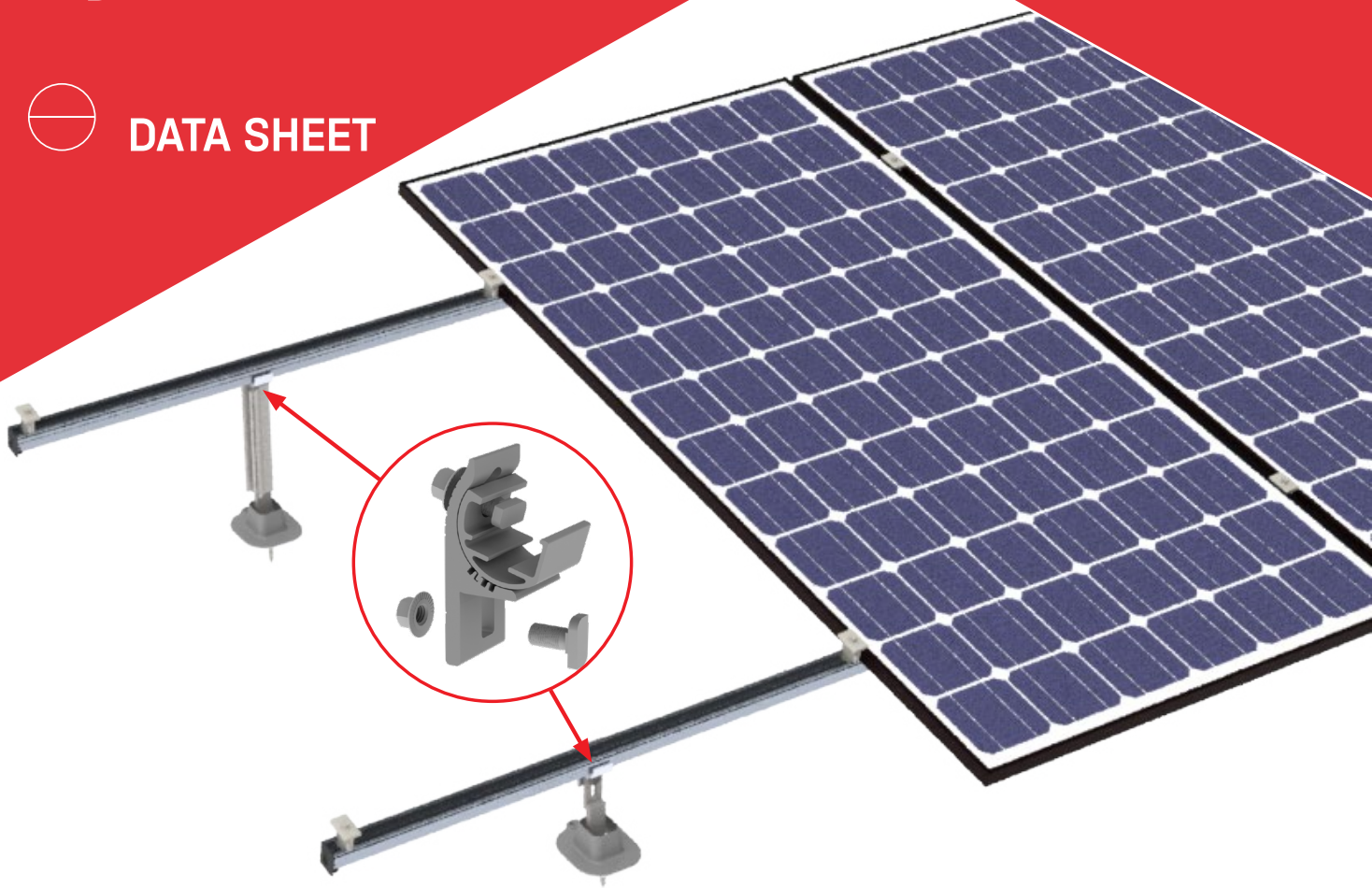


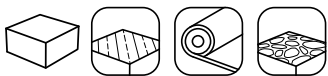
CrossRail Simple Tilt System



DATA SHEET



PRODUCT FEATURES



- / Tilt system compatible with all low slope roof coverings
- / Same universal components as CrossRail System results in quick installation
- / Various rail profiles to meet any design load
- / Simple Knee utilizes pre-designed tilt angle of 0°, 10°, 15° or 25°
- / CrossRails provide ultimate design flexibility

	CrossRail Simple Tilt System
Roof Type	All flat roof coverings: TPO, PVC, EPDM, Modified Bitumen, Concrete
Material	6000 series aluminum
Flexibility	Modular construction, suitable for any system size, height adjustable
PV Modules	For all common module types
Module Orientation	Portrait
Roof Connection	Roof attachment for specified roof type
Structural Validity	IBC compliant, stamped engineering letters available for all solar states
Certifications	UL 2703, ASCE 7-16, Class A Fire Rating
Warranty	25 years

Simple Tilt Dimensions for Installation

The Simple Tilt System is a completely custom solution. Figure 1 and Table 1 and 2 below provide recommended installation dimensions based on examples of standard PV modules with fastening locations at 1/6 of the module edge dimension. Always make sure the dimensions are suitable for the project site.

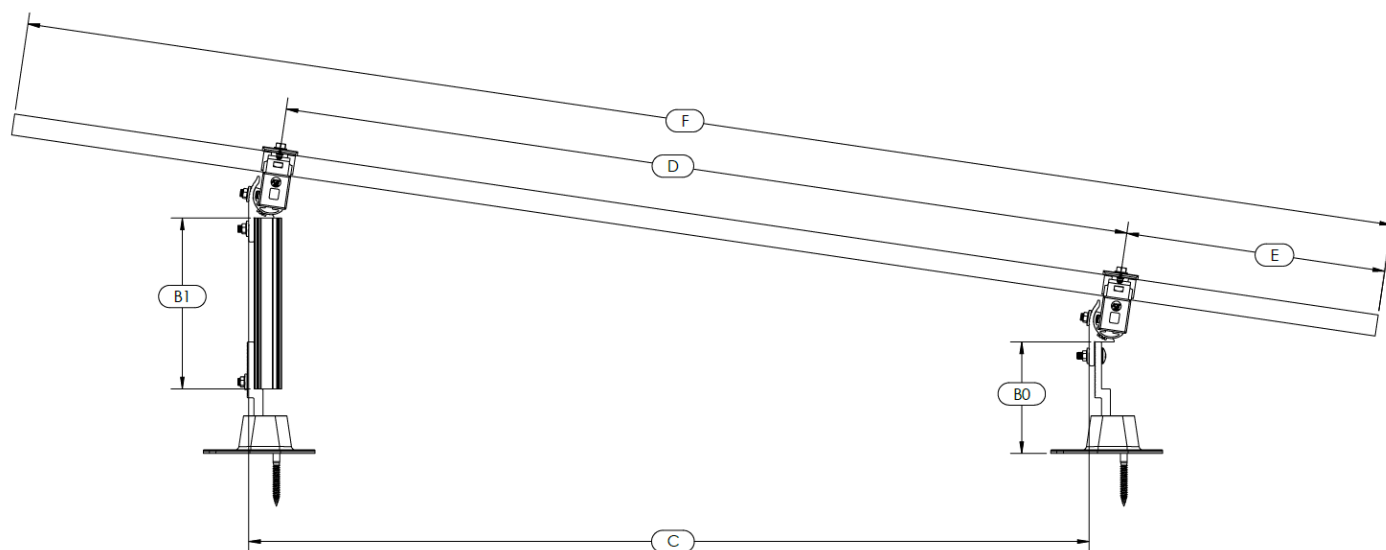


Figure 1: Assembly dimensions for the Simple Tilt System

Note: Maximum roof inclination of 5 °

Note: When the desired tilt angle is 0° the rail B1 isn't necessary.

Note: You can find B1 by using the equation $B1 = C \times \tan(\theta) + B0$



Dimensions	Description	Desired Tilt Angle			
		0 Degrees	8 Degrees	16 Degrees	24 Degrees
		Portrait			
		75" - 80" panels			
B0	Front Post Maximum	6.3	6.3	6.3	6.3
B1	Back Post	6.3	12.91	19.78	27.23
C	Span Front to Back	47	47	47	47
D	Clamp to Clamp	47	47.46	48.89	51.45
E	Clamp to Module Edge	13.12	13.12	13.12	13.12
F	Module Length	78.74	78.74	78.74	78.74

Table 1: Installation dimensions for one row of the Simple Tilt with 75" - 85" panels. All dimensions are in inches.

Dimensions	Description	Desired Tilt Angle			
		0 Degrees	8 Degrees	16 Degrees	24 Degrees
		Portrait			
		Up to 74" panels			
B0	Front Post Maximum	6.3	6.3	6.3	6.3
B1	Back Post	6.3	12.06	18.06	24.55
C	Span Front to Back	41	41	41	41
D	Clamp to Clamp	41	41.4	42.65	44.88
E	Clamp to Module Edge	11.16	11.16	11.16	11.16
F	Module Length	66.93	66.93	66.93	66.93

Table 2: Installation dimensions for one row of the Simple Tilt for up to 74" panels. All dimensions are in inches.

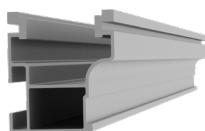


Considerations:

1. Always refer to the PV module manufacturer's installation instructions for approved fastening locations. The dimensions in Table 1 is an example that assumes a standard 75"-80" module length with fastening locations 1/6 of the total length.
2. The dimension of the front leg (B0) must measure at most 6.3"
3. Dimensions C and D are critical dimensions that must be followed, dimensions B1 and E are given in Table 1 as suggested values. The installer must verify that the dimensions are appropriate for individual site conditions, modules selected, and roof surface. With the following formula you can have an estimate of the length of the back leg:
$$B1 = C \times \tan(\theta) + B0$$

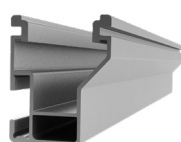
B1=Back leg (in)
 θ =Permitted tilt angle: 0°, 8°, 16° or 24°
E=Long side of module (in)
D=Module clamping area. Typically between 1/4 and 1/6 of the long side of the module. Consult the technical information of the module manufacturer to know the exact clamping zones.
4. The installer is responsible for cutting the track to the "B1" lengths.
5. Refer to Simple Tilt System Engineering Letter(s) for reaction loads at each anchor point. These calculations only consider wind loads. Seismic loads and snow loads were not taken into account.
6. The Simple Knee performs best when fully seated on top of the rail.
7. For more information please request the K2 Tool with our engineering team at infous@k2-systems.com

Components



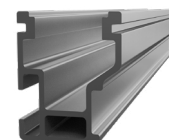
CrossRail 44-X

Part Number	Description
4000719	CrossRail 44-X, 172", Mill
4000720	CrossRail 44-X, 172", Dark
4000721	CrossRail 44-X, 185", Mill
4000722	CrossRail 44-X, 185", Dark



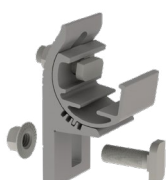
CrossRail 48-X

Part Number	Description
4000723	CrossRail 48-X, 172", Mill
4000663	CrossRail 48-X, 166", Dark



CrossRail 48-XL

Part Number	Description
4000695	CrossRail 48-XL, 166", Mill
4000727	CrossRail 48-XL, 172", Mill
4000728	CrossRail 48-XL, 172", Dark
4000729	CrossRail 48-XL, 185", Mill
4000730	CrossRail 48-XL, 185", Dark



K2 Simple Knee

Part Number	Description
4000116	Simple Tilt Knee, Set



Roof Attachments

Part Number	Description
4000630	L-Foot Slotted Set, Mill
4000631	L-Foot Slotted Set, Dark
4000080	T-Foot X 6" Kit, Mill
4000218	Big Foot 6" w/ 3"+ Chem Link Clip, Kit
4000559	K2 Armor w/ Big Foot, Kit



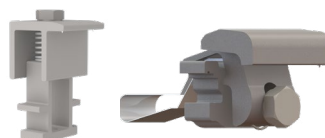
K2 Cross Clamp

Part Number	Description
4000135	K2 Cross Clamp Set, Mill
4000145	K2 Cross Clamp Set, Dark



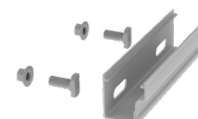
K2 Mid Clamp

Part Number	Description
4000229	K2 Mid Clamp Set, M8x40, Dark
4000230	K2 Mid Clamp Set, M8x40, Mill
4000251	K2 Mid Clamp Set, M8x60, Mill
4000252	K2 Mid Clamp Set, M8x60, Dark



End Clamps

Part Number	Description
4000197	K2 End Clamp Set, Mill
4000233	K2 End Clamp Set, Dark
4000050-B	Yeti Hidden 2.0, 13mm Hex Set



CrossRail Rail Connector

Part Number	Description
4000051-T	Tool-less Rail Connector 44-X, Set, Mill
4000052	Rail Connector CR 44-X, Set, Dark
4000052-T	Tool-less Rail Connector 44-X, Set, Dark
4000385	RailConn CR48-X,48-XL Struct Set, Mill
4000386	RailConn CR48-X,48-XL Struct Set, Dark



Bonding & Grounding

Part Number	Description
4000629-H	CR Microinverter & Opt, 13mm Hex Kit
4000006-H	K2 Ground Lug, 13mm Hex
4000083	MLPE, Module Frame Mount, Kit



Wire Management

Part Number	Description
4000400	K2 4 Wire Dragon Clip, Set
4000069	Wire Management Clip, TC
4000382	HEYClip SunRunner Cable Slip SS, S6404
4005394	Wire Mangement Clip, Omega, Black

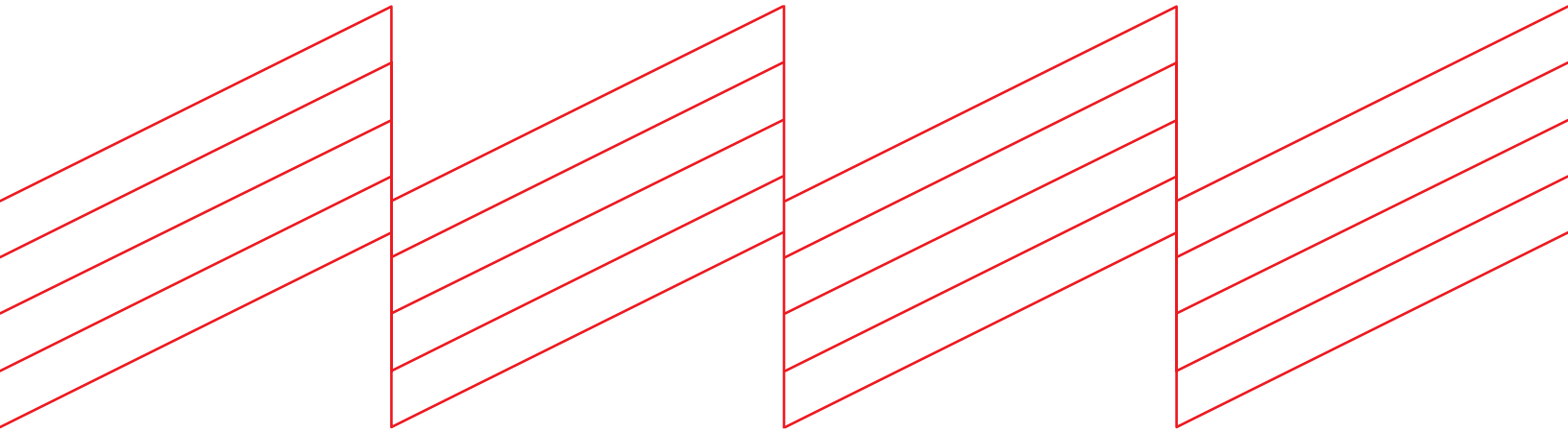


End Caps

Part Number	Description
4000176	EndCap 44-X, K2
4000431	CrossRail Flat EndCap, CR 48-X, 48-XL



Connecting Strength



K2 Systems, LLC

4665 North Ave. Suite I • Oceanside, CA 92056 •
USA +1.760.301.5300 • infous@k2-systems.com
www.k2-systems.com/en-us

CrossRail Simple Tilt System Data Sheet V2 | 0624 • Subject to change
Product illustrations are exemplary and may differ from the original.