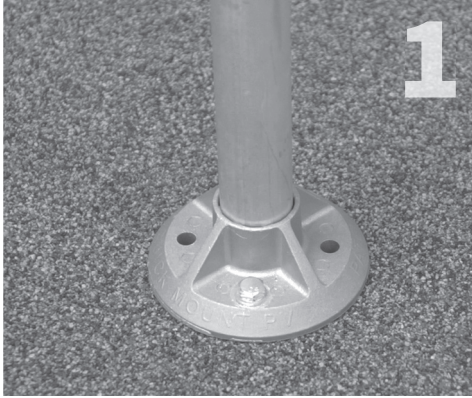


# QBase Low Slope Mount | QMLSH

## Waterproofing with Chem Link's E-Curb Penetration Seal System

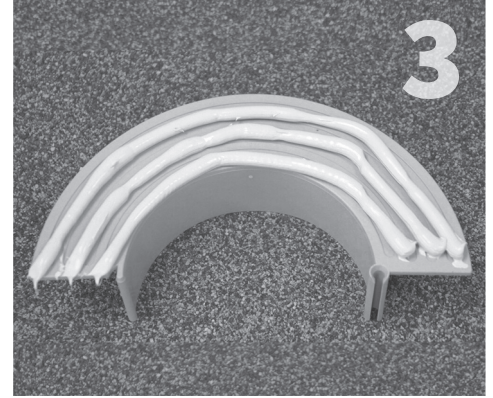
**Materials Required:** Chem Link's 5" E-Curb, M-1 Structural Adhesive/Sealant, 1-Part Pourable Sealant



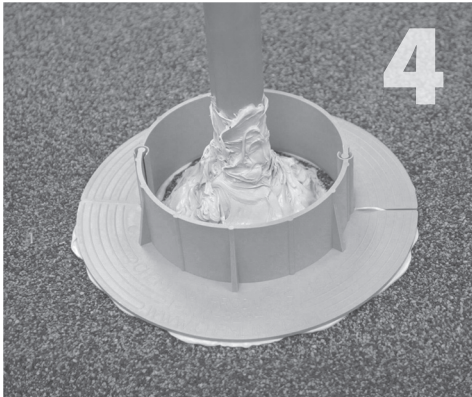
Install QBase to structural member. For more details refer to the QBase Low Slope installation instructions.



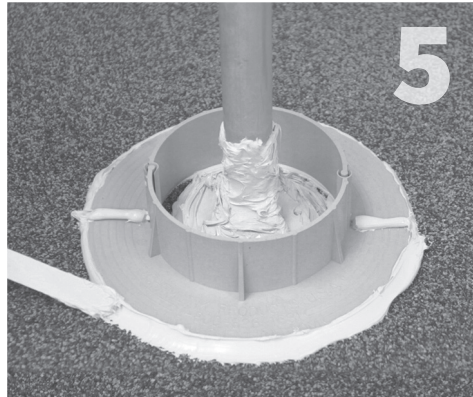
Seal around the base of mount using Chem Link's M-1. Coat the QBase, bolts and post with M-1 to 3" above roof line.



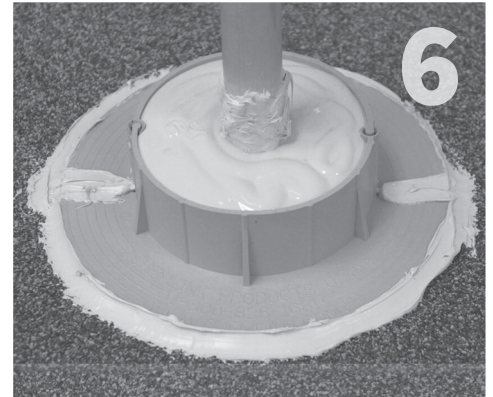
Apply three ¼" beads of M-1 to the flat base of both E-Curb sections.



Place E-Curb sections to form a circle around the QBase, making sure to lock them together. Press firmly in place until excess adhesive extrudes from the outside edges.



Apply M-1 around circumference of E-Curbs and where the two sections intersect. Use the wooden spatula to spread the sealant to form a smooth surface.



Fill the E-Curb cavity to the top with Chem Link's 1-Part solution.

**For use on:** granulated modified bitumen, asphalt and coal tar B.U.R. (built up roofing), PVC, PIB, and TPO single ply roofing membranes. TPO Primer is required for use with TPO.

**NOTE:** Be sure to thoroughly read and follow manufacturer instructions for installing Chem Link's E-Curb Penetration System. Find instructions here: [www.chemlink.com/e-curb](http://www.chemlink.com/e-curb)

**Quick Mount PV<sup>®</sup>**  
RESPECT THE ROOF

925-478-8269 • [www.quickmountpv.com](http://www.quickmountpv.com) • [info@quickmountpv.com](mailto:info@quickmountpv.com)  
2700 Mitchell Dr. • Walnut Creek, CA 94598