

# SIMPLEGRIP

## INSTALLATION GUIDE

REVISION DATE: 10/08/25

VERSION: v1.0



# SIMPLEGRIP

## INSTALLATION GUIDE

QuickMount



IRONRIDGE

*Clicking the page name will take you to that page*

|                                       |                       |
|---------------------------------------|-----------------------|
| <b><u>TABLE OF CONTENTS</u></b>       | <b><u>PAGE 01</u></b> |
| <b><u>FEATURES &amp; BENEFITS</u></b> | <b><u>PAGE 02</u></b> |
| <b><u>COMPONENTS</u></b>              | <b><u>PAGE 03</u></b> |
| <b><u>INSTALLATION</u></b>            | <b><u>PAGE 04</u></b> |
| <b><u>DISCLAIMER</u></b>              | <b><u>PAGE 07</u></b> |

# SIMPLEGRIP

## INSTALLATION GUIDE

QuickMount



IRONRIDGE



## SIMPLEGRIP

SimpleGrip is designed to attach PV modules to rolled or membrane roofs with pitches from 1/4:12 - 21:12. The base is compressed between two layers of adhesive to create a watertight seal without the need for additional flashing. The compression plate protects the adhesive and features a watertight grommet that can be combined with IronRidge slotted L-Foot for Comp Shingle Mount (US) or the ClickFit Universal L-Mount.

## FEATURES

- Patented Watertight Technology
- Four self-drilling screws optimum uplift and fast installation
- UV Ray shielded mastic prevents degradation
- Installs without cutting into the roof

FEATURES + BENEFITS

# SIMPLEGRIP

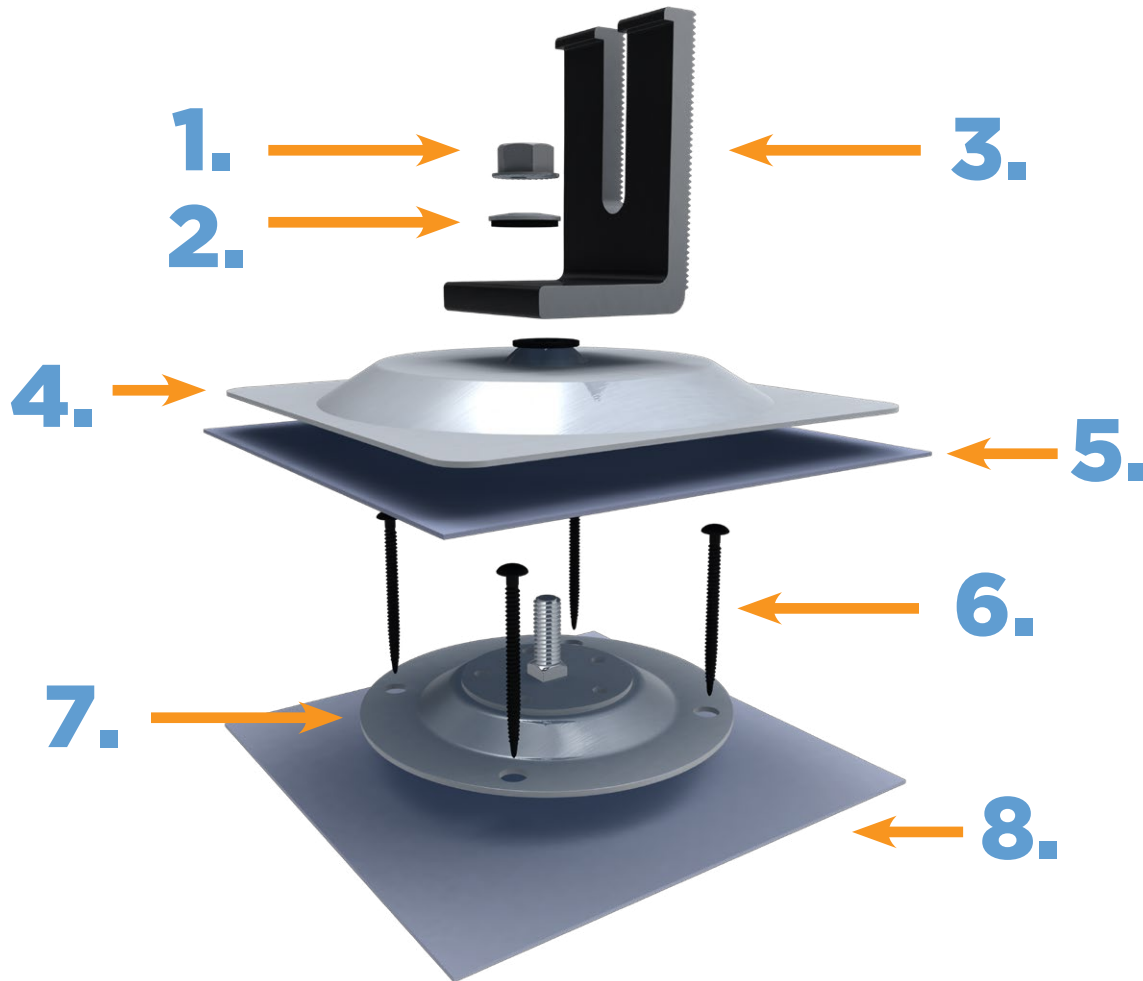
## INSTALLATION GUIDE

QuickMount



IRONRIDGE

### SYSTEM COMPONENTS SIMPLEGRIP



- |   |   |
|---|---|
| 1. 5/16 OR 3/4" SERRATED FLANGE NUT           | 5. ADHESIVE TOP                             |
| 2. EPDM BONDED SEALING WASHER                 | 6. #15-13 SELF DRILLING FASTENER (2 OR 4X)  |
| 3. IRONRIDGE 3" L-FOOT OR CF-UNIVERSAL L-FOOT | 7. SIMPLEGRIP BASE ASSEMBLY AL (BASE PLATE) |
| 4. SIMPLEGRIP BASE ASSEMBLY AL (FLASHING)     | 8. ADHESIVE BOTTOM                          |

COMPONENTS

# SIMPLEGRIP

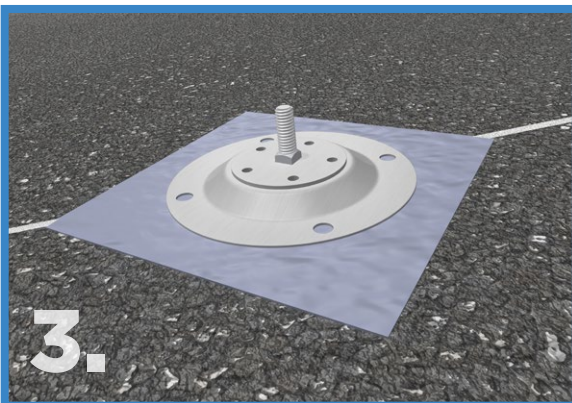
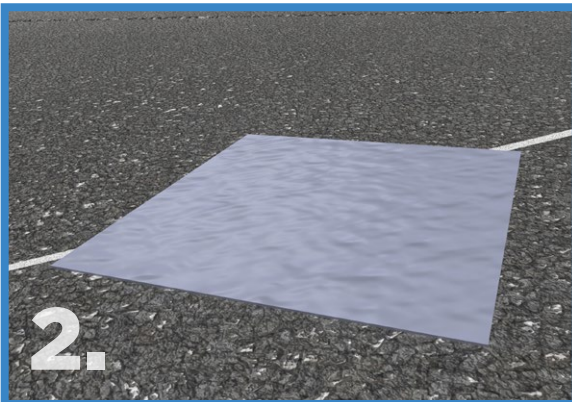
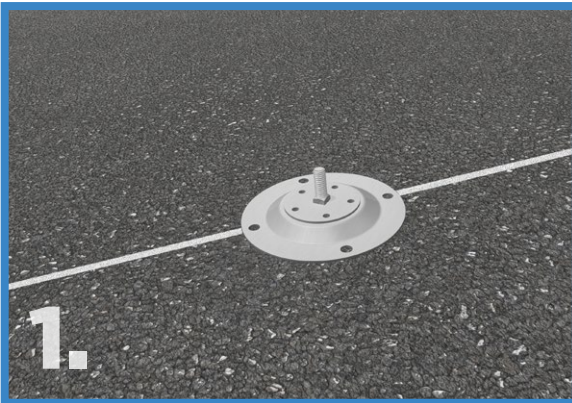
## INSTALLATION GUIDE

QuickMount



IRONRIDGE

## INSTALLING SIMPLEGRIP



1. Locate and mark off rafters then determine location for the SimpleGrip Base Plate over the rafter. Pre-drill a single 1/8" hole into roof to confirm rafter location.

2. Clear the mount location of debris with a brush or compressed air. Peel off release liner from one side of Adhesive Bottom and place and roll onto roof surface at the marked location of the Base Plate.

**\*INSTRUCTIONS FOR WORKING WITH ADHESIVE FOUND ON PAGE 6**

3. Peel off and remove the top side of the release liner from the Adhesive Bottom sheet and place Base Plate in the center of the Adhesive Bottom, taking care that mounting holes are oriented over the center of the rafter.

INSTALLATION

# SIMPLEGRIP

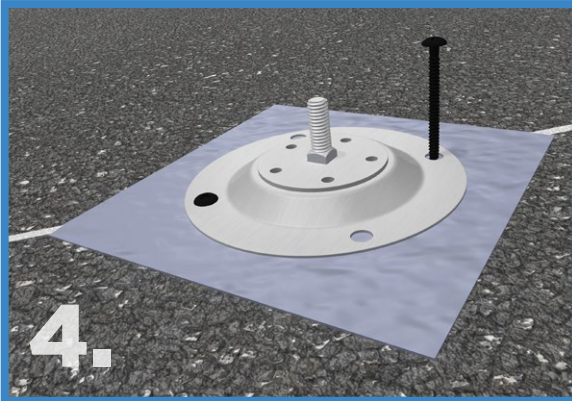
## INSTALLATION GUIDE

QuickMount

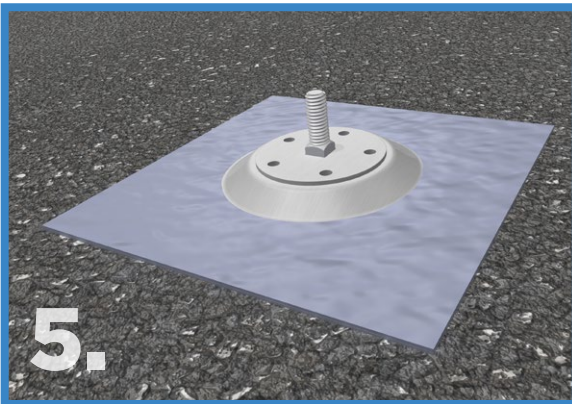


IRONRIDGE

## INSTALLING SIMPLEGRIP



4. Install a minimum of 2 fasteners into rafter at opposite sides of the Base Plate. 2 Additional fasteners can be installed in the opposing holes into the roof deck for additional strength.



5. Peel off and remove one side of the release liner on Adhesive Top sheet and place over the perimeter of the Base Plate. Peel off and remove the top side of release liner from the adhesive Top sheet.

INSTALLATION

# SIMPLEGRIP

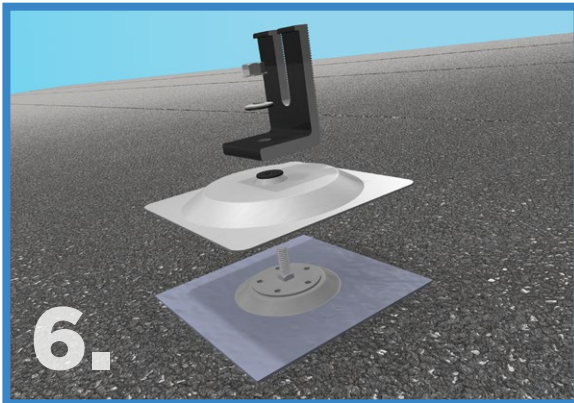
## INSTALLATION GUIDE

QuickMount

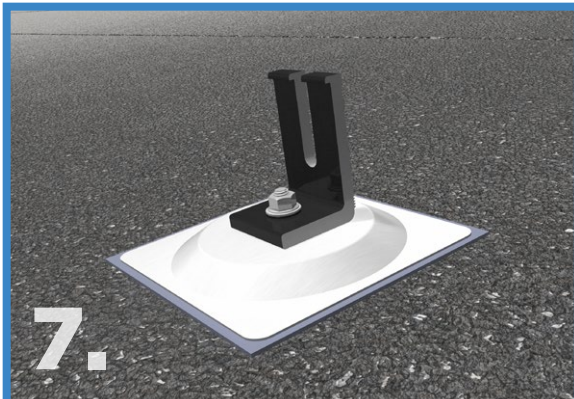


IRONRIDGE

## INSTALLING SIMPLEGRIP



6. Install the SimpleGrip Flashing over the threaded stud of the Base Plate. Attach the L-Foot to the threaded stud. Install appropriate bonded sealing washer with rubber side facing down, followed by the appropriate sized flange nut.



7. Torque Serrated Flange Nut to 100-140 inch pounds.

### WORKING WITH ADHESIVE

- Adhesive sheets are compatible with a variety of roof types including membrane and rolled roofing (excluding PVC roofs.)
- Surface must be dry and clear of all oil, grease, dust dirt or other debris. Use a dry brush or compressed air to clear the area.
- Ambient air temp should be above 40 degrees F
- To Install peel off and remove one side of the release liner and apply to the roof surface. Rub or roll with pressure using your hand or steel roller to activate bonding process.

# SIMPLEGRIP

## INSTALLATION GUIDE

QuickMount



IRONRIDGE

## DISCLAIMER

This manual describes proper installation procedures and provides necessary standards required for product reliability. Warranty details are available on the website. All installers must thoroughly read this manual and have a clear understanding of the installation procedures prior to installation. Failure to follow these guidelines may result in property damage, bodily injury or even death.

### IT IS THE INSTALLER'S RESPONSIBILITY TO:

- Ensure safe installation of all electrical aspects of the array. All electrical installation and procedures should be conducted by a licensed and bonded electrician or solar contractor.
- All work must comply with national, state and local installation procedures, product and safety standards, including the proper use of PPE.
- Comply with all applicable local or national building and fire codes, including any that may supersede this manual.
- Ensure all products are appropriate for the installation, environment, and array under the site's loading conditions.
- Use only QuickMount and IronRidge parts or parts recommended by QuickMount and IronRidge; substituting parts may void any applicable warranty.
- Review the Design Assistant and Certification Letters to confirm design specifications.
- Ensure provided information is accurate. Issues resulting from inaccurate information are the installer's responsibility.
- Ensure bare copper grounding wire does not contact aluminum and zinc-plated steel components, to prevent risk of galvanic corrosion.
- If loose components or loose fasteners are found during periodic inspection, re-tighten immediately. Any components showing signs of corrosion or damage that compromise safety shall be replaced immediately.
- Provide an appropriate method of direct-to-earth grounding according to the latest edition of the National Electrical Code, including NEC 250: Grounding and Bonding, and NEC 690: Solar Photovoltaic Systems.
- Disconnect AC power before servicing or removing modules, AC modules, microinverters and power optimizers.
- Review module and any 3rd party manufacturer's documentation for compatibility and compliance with warranty terms and conditions.
- Module mounting rails shall not be used as scaffolding, a roof jack, or any form of an anchoring point for roof personnel.
- Ensure that the roof is in good condition prior to installing any QuickMount or IronRidge components.

DISCLAIMER

# SIMPLEGRIP

INSTALLATION GUIDE

QuickMount



IRONRIDGE



# IRONRIDGE

Make Solar **Stronger**®

IronRidge®, an Enstall® company, designs and manufactures structural hardware for residential and commercial solar systems. For almost 30 years, we have worked closely with solar professionals to build strong, simple, and cost-effective products. The QuickMount brand family of products are manufactured and sold by IronRidge.

---

**28357 INDUSTRIAL BOULEVARD HAYWARD, CA 94545**

**800-227-9523 | SALES@IRONRIDGE.COM**