



Knockout Tile

A Breakthrough Tile Solution

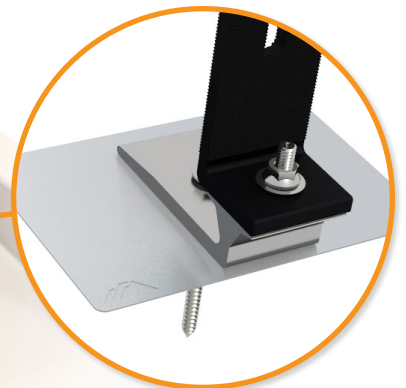
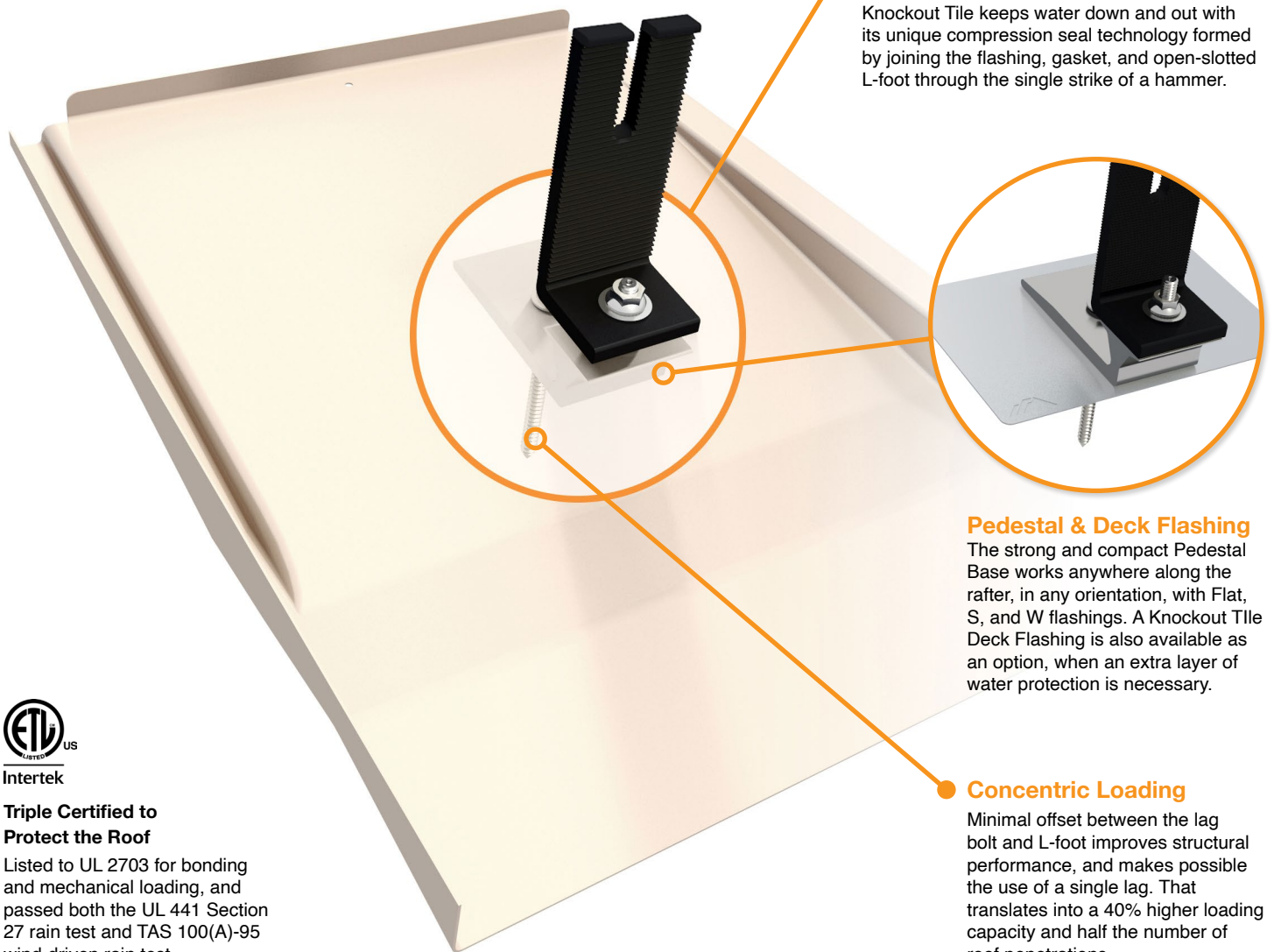
Solar installs on tile roofs can be messy and complicated. These jobs often require tile grinding to ensure fit, a struggle to align mounting components, and extensive searches to find the replacements for broken tiles.

Knockout Tile is a replacement mount that rapidly and reliably integrates into the existing roof system. With the strike of a hammer, you create a solid stack of high-performance, form-fitting components to fully encase the waterproof seal. This results in unprecedented speed and flexibility during installation.



Form-Fit Waterproofing

Knockout Tile keeps water down and out with its unique compression seal technology formed by joining the flashing, gasket, and open-slotted L-foot through the single strike of a hammer.



Pedestal & Deck Flashing

The strong and compact Pedestal Base works anywhere along the rafter, in any orientation, with Flat, S, and W flashings. A Knockout Tile Deck Flashing is also available as an option, when an extra layer of water protection is necessary.

Concentric Loading

Minimal offset between the lag bolt and L-foot improves structural performance, and makes possible the use of a single lag. That translates into a 40% higher loading capacity and half the number of roof penetrations.

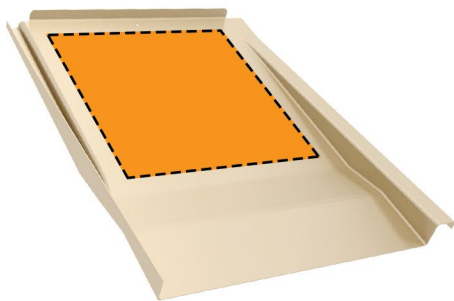


Triple Certified to Protect the Roof

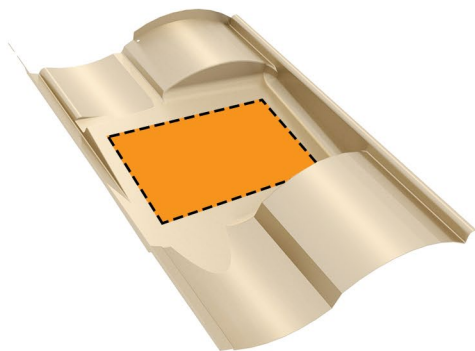
Listed to UL 2703 for bonding and mechanical loading, and passed both the UL 441 Section 27 rain test and TAS 100(A)-95 wind-driven rain test.

No Struggling to Align Components

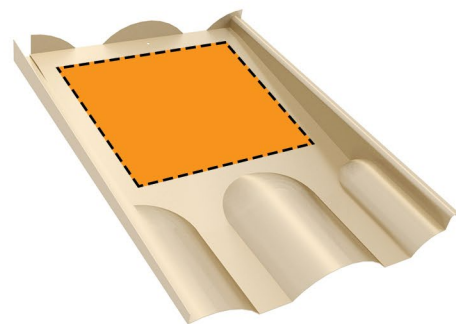
Punch through the flashing anywhere in these zones.



Flat Tile

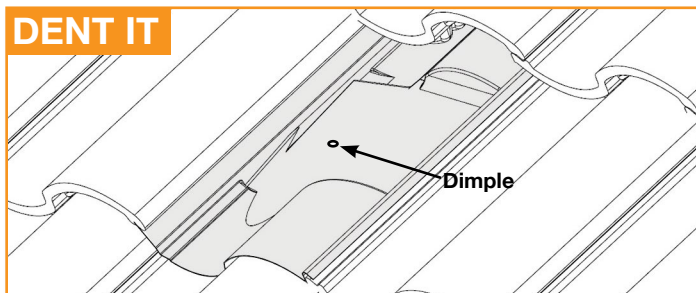


S-Tile



W-Tile

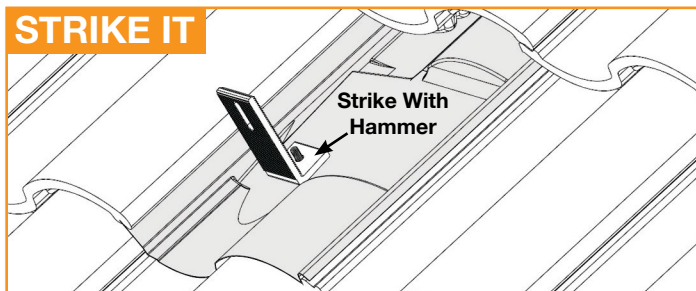
DENT IT



Deliver a Knockout in Record Time

Remove the tile and mark the rafter. Use the Pedestal as a guide to drill 1/4" pilot hole and fill with roofing manufacturer's approved sealant.

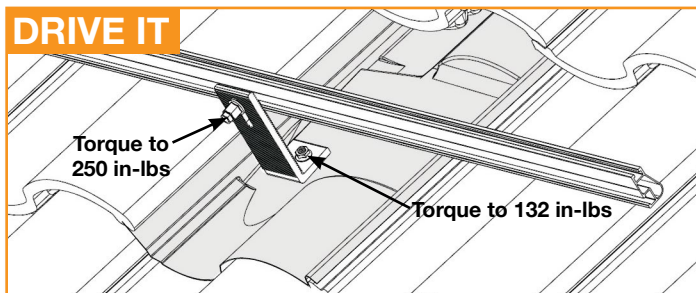
STRIKE IT



Insert the lag bolt with bonded washer through the Pedestal and into the pilot hole. The Pedestal can be installed parallel or perpendicular to the rafter.

Press the Tile Replacement Flashing onto the Pedestal until a dent forms over the post. Form the edges of the flashing to quickly create a tight fit.

DRIVE IT



Place the L-Foot over the top of the dent and strike with the hammer to punch the threaded post through the flashing.

Once the L-Foot is positioned, torque the hardware to 132 in-lbs and attach the rail to either side of the L-Foot and torque hardware to 250 in-lbs.

25-Year Warranty

When using Knockout Tile with XR Rail, the entire assembly is covered by IronRidge's 25-year warranty. To learn more about IronRidge's product warranty, visit the IronRidge website at www.ironridge.com.