

ITEM NO.	DESCRIPTION
1	BOLT, 7/16 IN HEAD, SERRATED FLANGE
2	T-BASE
3	SPRING
4	HINGE CLAMP
5	NUT, SQUARE

Eclipse (XR Hidden End Clamp)		
SIZE <b>A</b>	DO NOT SCALE DRAWING	
SCALE: 1:4	WEIGHT: 0.144 lbs	SHEET 1 OF 1

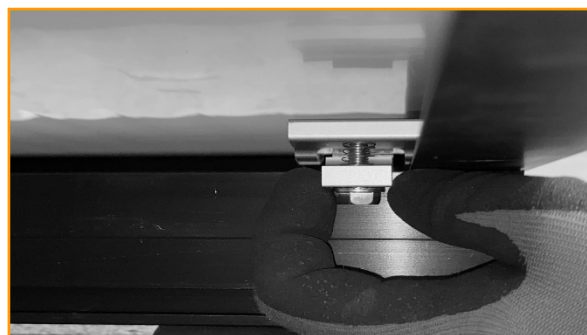
# Installation

**Tools Required:** 7/16" Socket Wrench (Cordless Ratchet Tool also recommended)

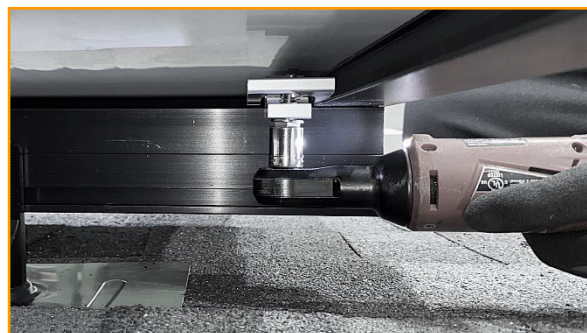
- 1) Align Eclipse and slide into the top channel of the XR Rail far enough to clear the module frame.
  - Note the head of the bolt should be facing towards the roof.
  - It's best to orient the Eclipse so that the head of the bolt is on the flat side of the rail.



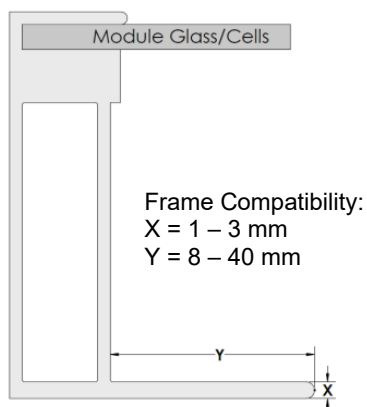
- 2) Place module on rails, then pull the Eclipse towards the module frame so the upper part of the Eclipse is resting on the module flange.
  - Because of XR's triangular profile, if the Eclipse is oriented so the head of the bolt is on the angled side, a crescent wrench will most likely be needed to tighten the clamp and secure the module.



- 3) Secure the module by tightening the hex bolt with a 7/16" socket to 80 in-lb.
  - IronRidge recommends using a cordless ratchet tool for optimal installation speed.
  - A ratchet wrench may work better in tight spaces.



## Module Compatibility and Certifications



UL 2703 Conforms to STD UL 2703 (2015) requirements. See IronRidge® XR Flush, Tilt, or Ground Mount Manuals for full ratings and list of compatible modules.