



GP-AGM-100

DEEP CYCLE SOLAR BATTERY

Features:

- AGM deep cycle battery
- Ideal for solar applications and inverter systems
- Maintenance-free, sealed construction
- Spill proof / leak proof (VRLA)
- ABS case and cover
- UL recognized
- 100% recyclable
- Integrated carrying handles



SPECIFICATIONS

| | |
|--|---|
| Technology | AGM, VRLA deep cycle battery |
| Nominal Voltage | 12 V |
| Nominal Capacity | 110 Ah |
| Rated Capacity | 110.0 Ah/1.10A (100hr, 1.80V/cell) 100.0 Ah/5.00A (20hr, 1.80V/cell) 95.2 Ah/9.52A (10hr, 1.80V/cell) 83.0 Ah/16.6A (5hr, 1.75V/cell) |
| Nominal Operating Temperature | 77 ±5 °F (25 ±3 °C) |
| Operating Temperature Range | Discharge, Storage: -4~140°F (-20~60°C) Charge: -4~122°F (-20~50°C) |
| Capacity Correction for Temperature Variations | 104°F (40°C) 103% 77°F (25°C) 100% 32°F (0°C) 86% |
| Maximum Discharge Current | 1200 A (5s) |
| Internal Resistance | Approx. 4.9mΩ |
| Terminals | T14 Torque: 11 ~ 14.7 Nm (97.28 - 130 in*lbs) |
| Cycle Use | Initial Charging Current less than 30.0 A Voltage: 14.4 V~15.0 V at 77°F (25°C) Temp. Coefficient -30mV/°C |
| Standby Use | No limit on Initial Charging Current Voltage: 13.5 V~13.8 V at 77°F (25°C) Temp. Coefficient -20mV/°C |
| Certifications | UL; CE; IEC60896-21 & 22 |
| Self Discharge | Batteries can be stored for up to 6 months before a freshening charge is required. <i>*Batteries stored at temperatures greater than 77°F (25°C) will require a recharge sooner.</i> |
| Cycle Life 77°F (25°C) | 100% Depth of Discharge ~ 250 cycles 50% Depth of Discharge ~ 1100 cycles 30% Depth of Discharge ~ 2250 cycles |

MATERIALS

| | |
|----------------|----------------------------------|
| Case and Cover | ABS |
| Separator | Absorbent Glass Mat (AGM) |
| Active | PbO ₂ + Pb |
| Electrolyte | Diluted Sulfuric Acid |
| Venting Valve | Rubber, opening pressure 8-20kPa |

MECHANICAL

| | |
|------------------------------------|--------------------------------|
| Length | 12.01 in / 305mm |
| Width | 6.61 in / 168 mm |
| Height | 8.15 in / 207 mm |
| Total Height (including terminals) | 9.02 in / 229 mm |
| BCI Group # | 27 |
| Weight | 67.5 lbs / 30.6 kg |
| Carrying | Integrated flush mount handles |

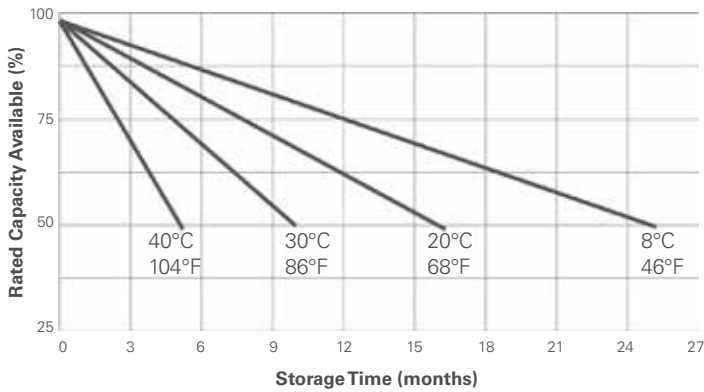
REPRESENTED IN YOUR REGION BY:



GP-AGM-100

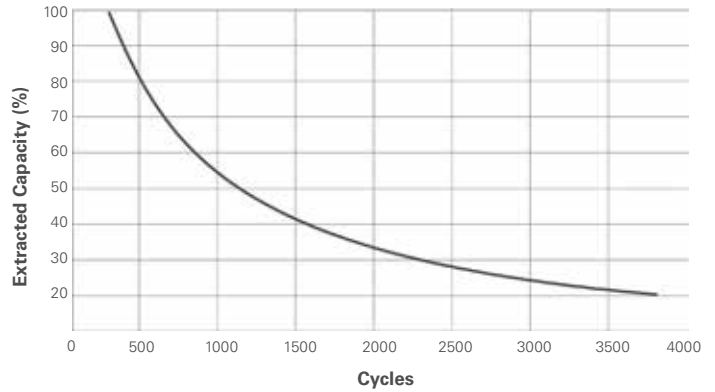
DEEP CYCLE SOLAR BATTERY

Battery Self-Discharge Over Temperature

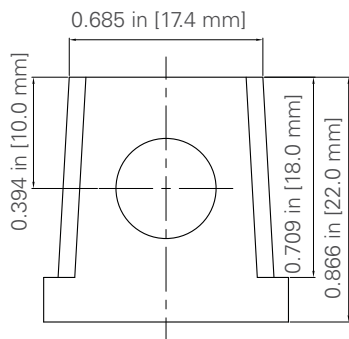


Battery Cycle Life

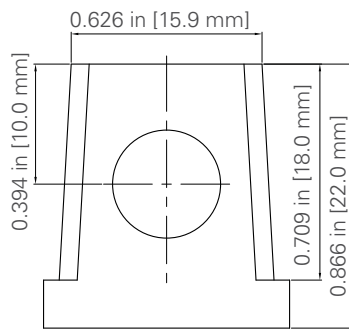
77°F (25°C)



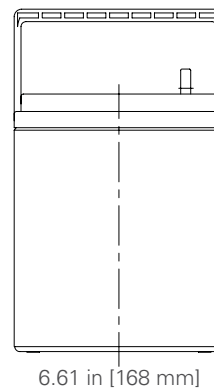
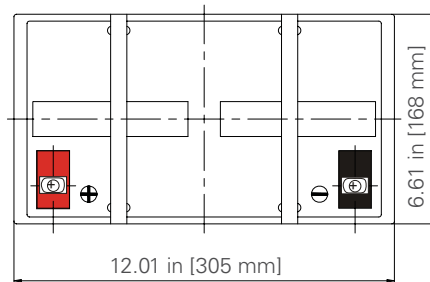
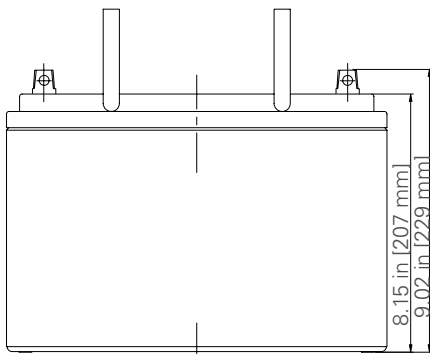
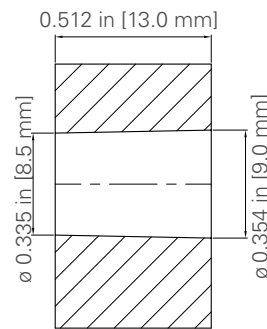
TERMINAL DIMENSIONS



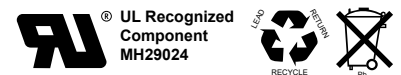
T14 -1 Positive



T14 -2 Negative



Specifications subject to local environmental conditions. Specifications may be subject to change.



© 2017, Go Power! US and International patents apply. "Go Power!" and the Go Power! logo are registered trademarks

Document: CMH-AGM-100_Spec_Sheet_RevC