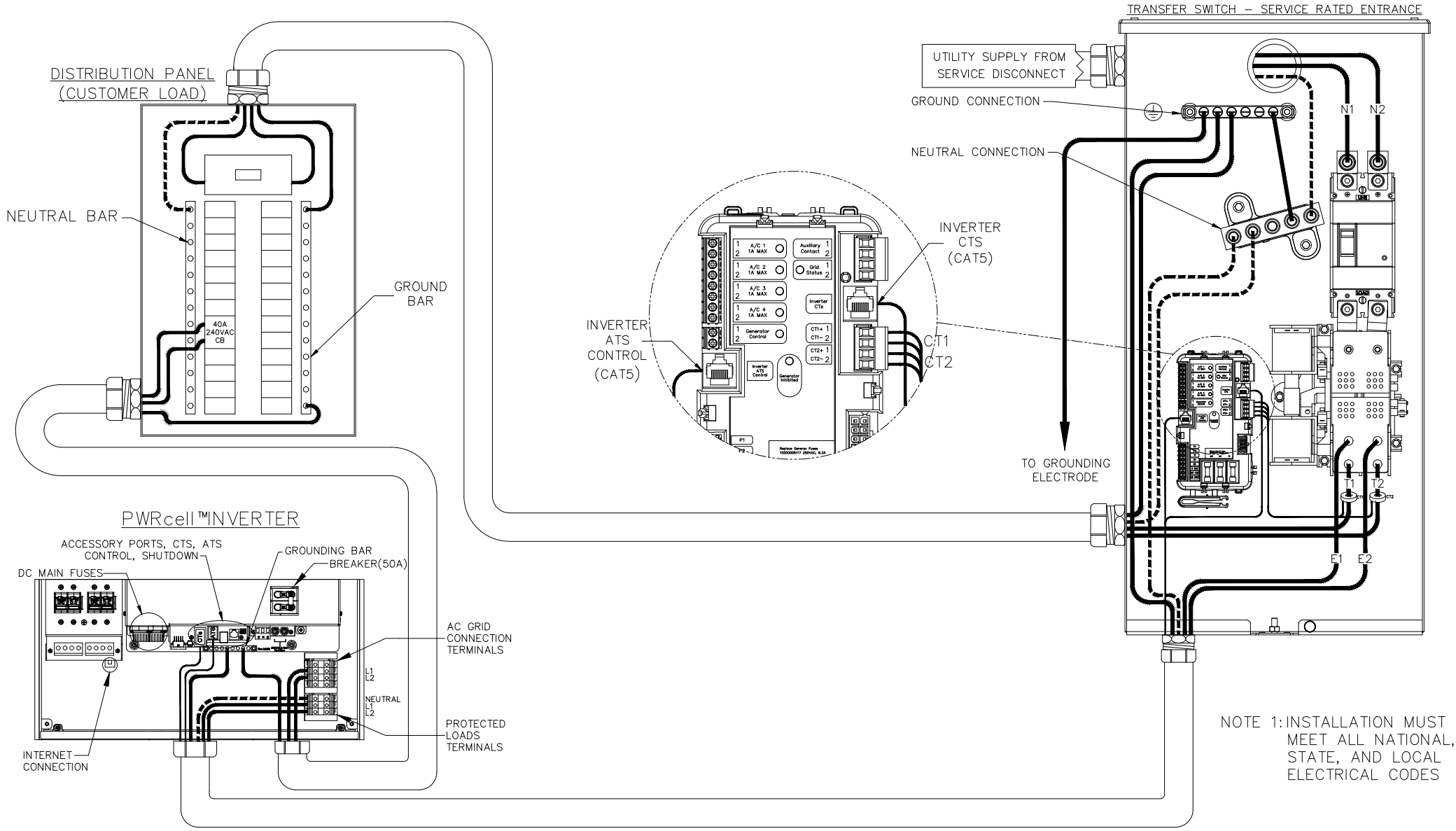


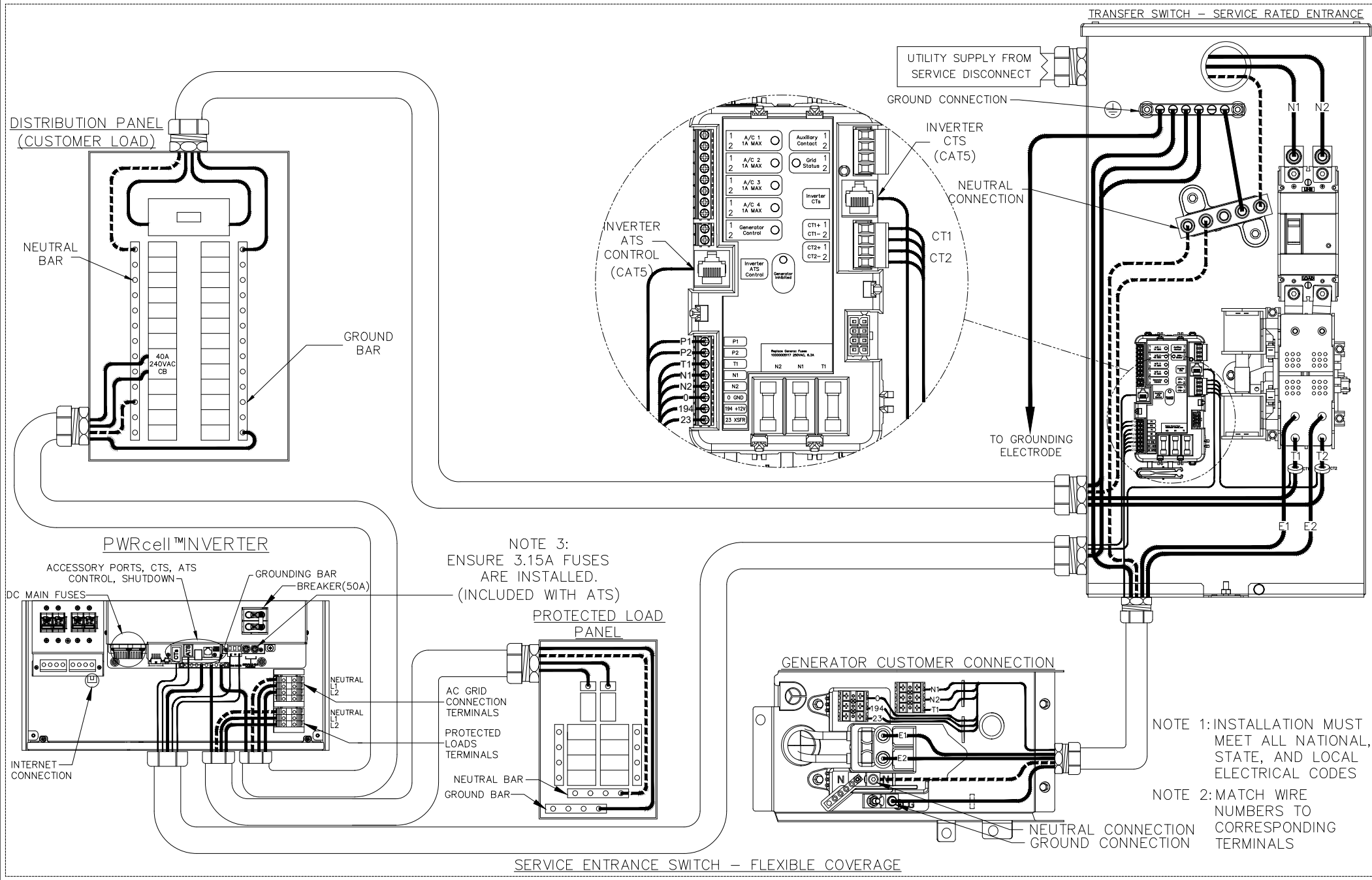
NOTE 1: INSTALLATION MUST MEET ALL NATIONAL, STATE, AND LOCAL ELECTRICAL CODES

NON SERVICE ENTRANCE SWITCH – ESS ONLY INTERCONNECTION



SERVICE ENTRANCE SWITCH – ESS ONLY INTERCONNECTION

NOTE 1: INSTALLATION MUST MEET ALL NATIONAL, STATE, AND LOCAL ELECTRICAL CODES



NOTE 3:
ENSURE 3.15A FUSES
ARE INSTALLED.
(INCLUDED WITH ATS)
PROTECTED LOAD
PANEL

NOTE 1: INSTALLATION MUST MEET ALL NATIONAL, STATE, AND LOCAL ELECTRICAL CODES
NOTE 2: MATCH WIRE NUMBERS TO CORRESPONDING TERMINALS

