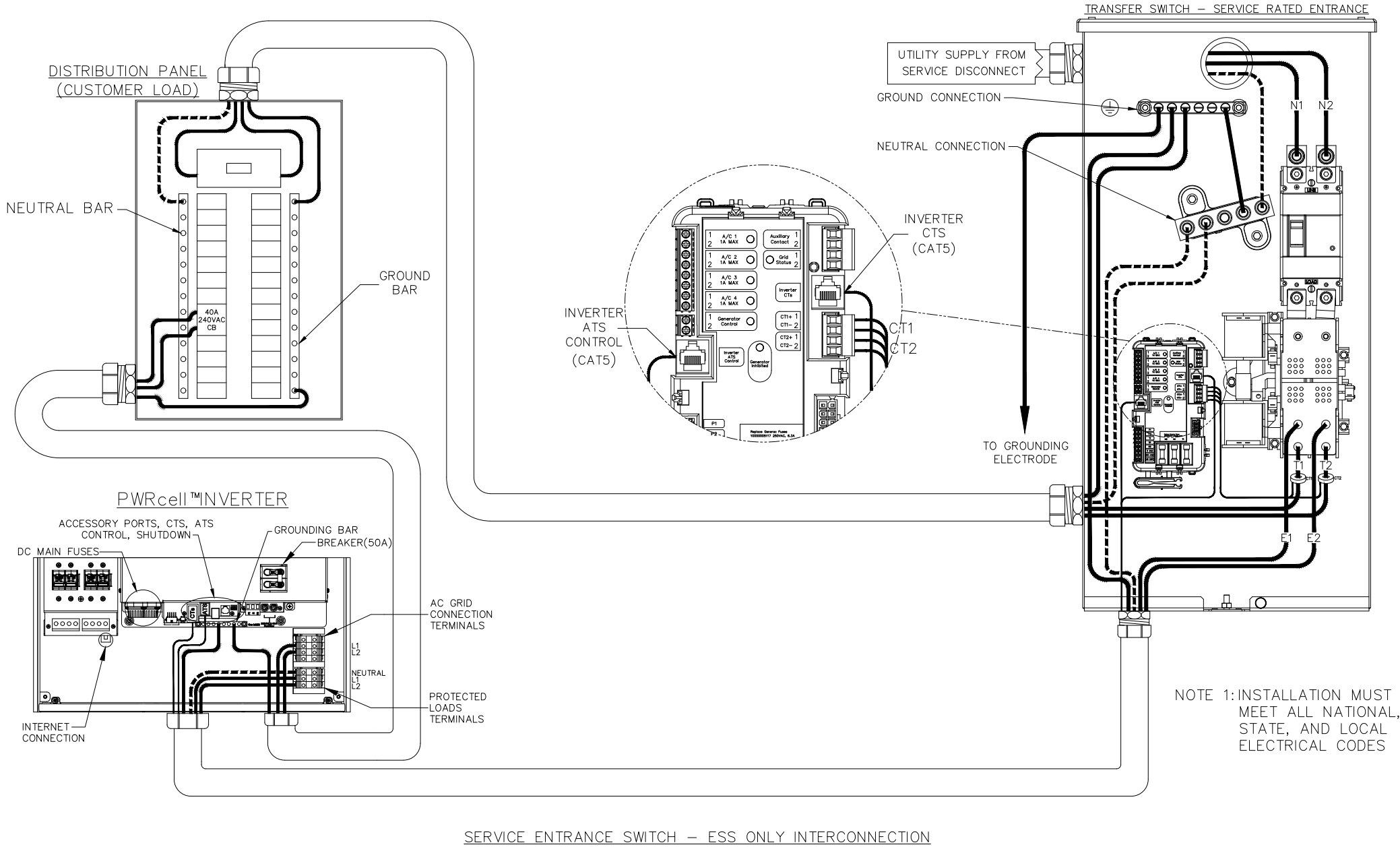
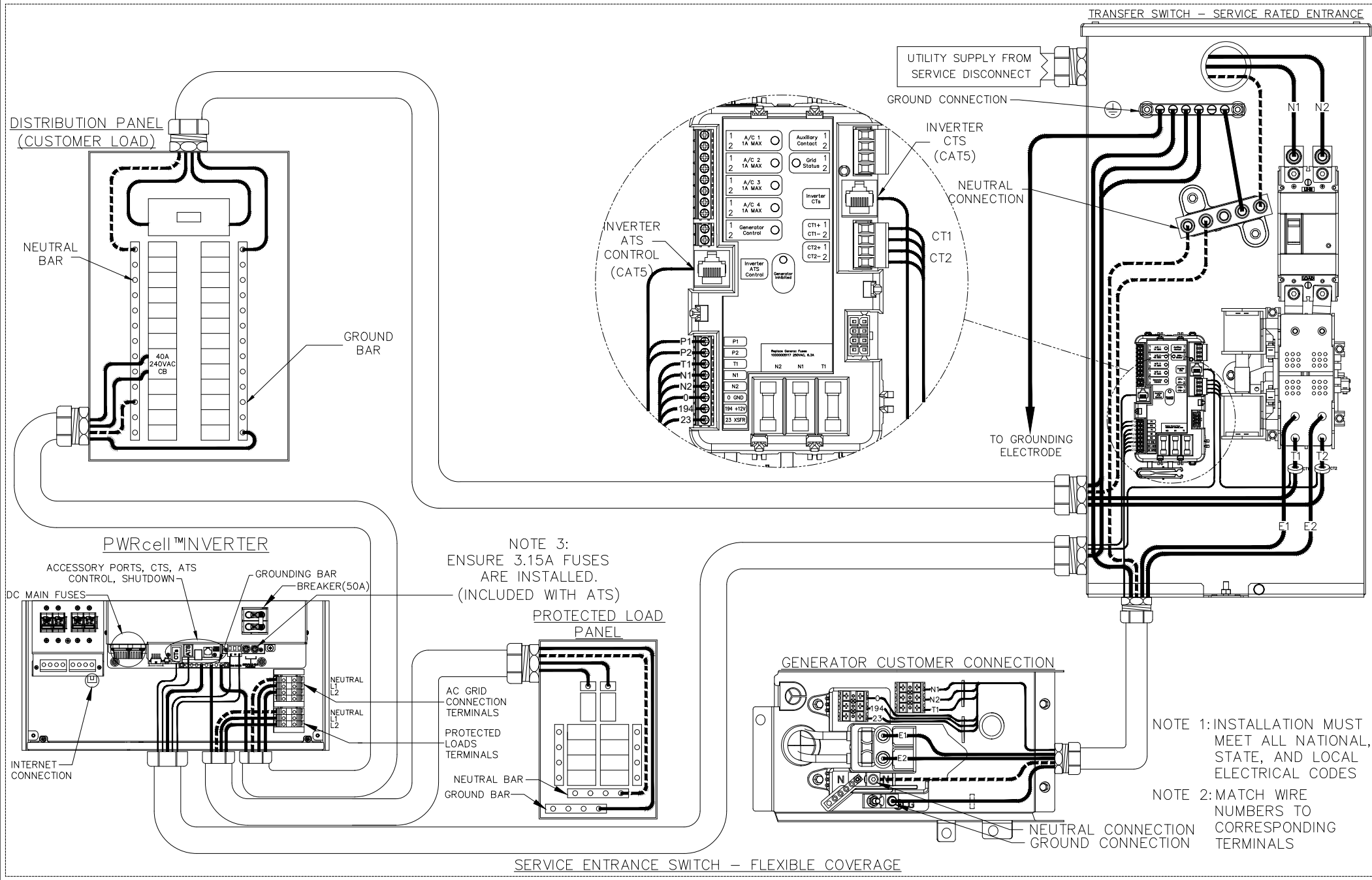


NOTE 1: INSTALLATION MUST MEET ALL NATIONAL, STATE, AND LOCAL ELECTRICAL CODES

NON SERVICE ENTRANCE SWITCH – ESS ONLY INTERCONNECTION



SERVICE ENTRANCE SWITCH – ESS ONLY INTERCONNECTION



NOTE 3:
ENSURE 3.15A FUSES
ARE INSTALLED.
(INCLUDED WITH ATS)
PROTECTED LOAD
PANEL

NOTE 1: INSTALLATION MUST
MEET ALL NATIONAL,
STATE, AND LOCAL
ELECTRICAL CODES

NOTE 2: MATCH WIRE
NUMBERS TO
CORRESPONDING
TERMINALS

