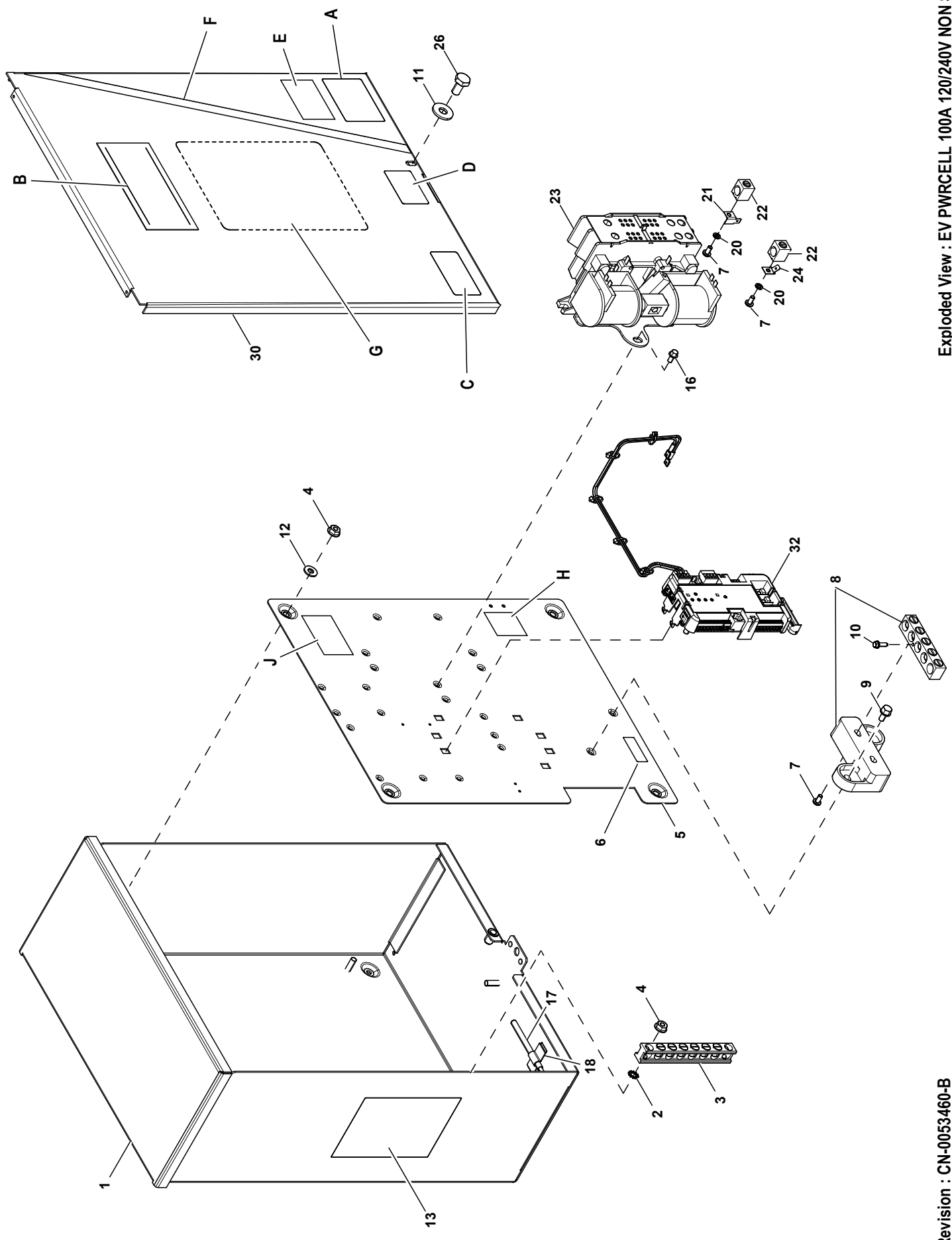


GROUP



EXPLODEDVIEW: EV PWRCELL 100A 120/240V NON SE01

DRAWING#: A0001501146

GROUP

APPLICABLE TO:

ITEM	PART#	QTY.	DESCRIPTION
1	OK01120AL14	1	ENCLOSURE 100/200A XFER SW
2	G026850	2	WASHER LOCK EXT 1/4 STL
3	0J8202	1	LUG SLDLSS 2/0-#14 AL9CU
4	OG8411	6	NUT HEX FLANGE WHIZ 1/4-20
5	10000014617	1	SUBPLATE 100/200A XFER SW
6	0A9457	1	DECAL NEUTRAL
7	G036933	6	SCREW PPHM #10-32 X 3/8
8	---	1	ASSY NEUT BLK 100A W/TAP 5POS
9	G090388	2	SCREW HHTT M6-1.0 X 12 ZINC
10	G026902	1	SCREW HHTT #8-32 X 1/4 CZ
11	0A2115	1	WASHER FLAT NYLON 3/16BS .625 X .062 THK
12	G022473	4	WASHER FLAT 1/4-M6 STEEL ZINC
13	A0000966009	1	DECAL WARN MANUAL OPER HANDLE EN/SP/FR
16	G074908	4	SCREW HHTT M5-0.8 X 10 BP
17	0E6155	1	PIN ARM EXTENDER
18	OK8254	1	U-CLIP ADHESIVE
20	G022152	6	WASHER LOCK SPRING #10 ZC
21	10000009445	4	90 DEGREE STRAIGHT SPADE CONNECTOR
22	G077033	6	LUG SLDLSS 1/0-#14X9/16 AL/CU
23	0L2910	1	XFRSW HSB 100A 2P 250V
24	G074138	1	LUG DIS QK NI-S 10X45 DEG BR/T
26	G085296	1	SCREW HHC 1/4-20 X 1/2 SS
30	A0001835420	1	COVER 100/200A XFER SW
A	---	1	DECAL LIVE CIRCUIT ENG/FRN/SPN
B	---	1	DECAL GENERAC PWRCELL 124X57 MM
C	---	1	DECAL NEC COMPLIANCE
D	---	1	DECAL PROP 65 EN/SP/FR
E	---	1	DECAL WCR NEC COMPLIANCE
F	---	1	DECAL GENERAC PWRCELL STRIPE 495X13 MM
G	---	1	DECAL TEST SEQUENCE 100/200A NON
32	A0002059820	1	ASSY MODULE- PWRCELL ATS CONTROLLER V3
33	10000005872	1	HARNESS 100/200A TS (NOT SHOWN)
34	028739A	1	TIE WRAP UL 3.9 X .10 BLK (NOT SHOWN)
35	G057593	1	CABLE TIE MOUNT BLACK (NOT SHOWN)
38	A0000840196	1	PWRCELL DECALS SERVICE ENTRANCE (NOT SHOWN)
H	---	1	PWRCELL DECALS SERVICE ENTRANCE (INCLUDED IN A0000840196)
J	---	1	PWRCELL DECALS SERVICE ENTRANCE (INCLUDED IN A0000840196)