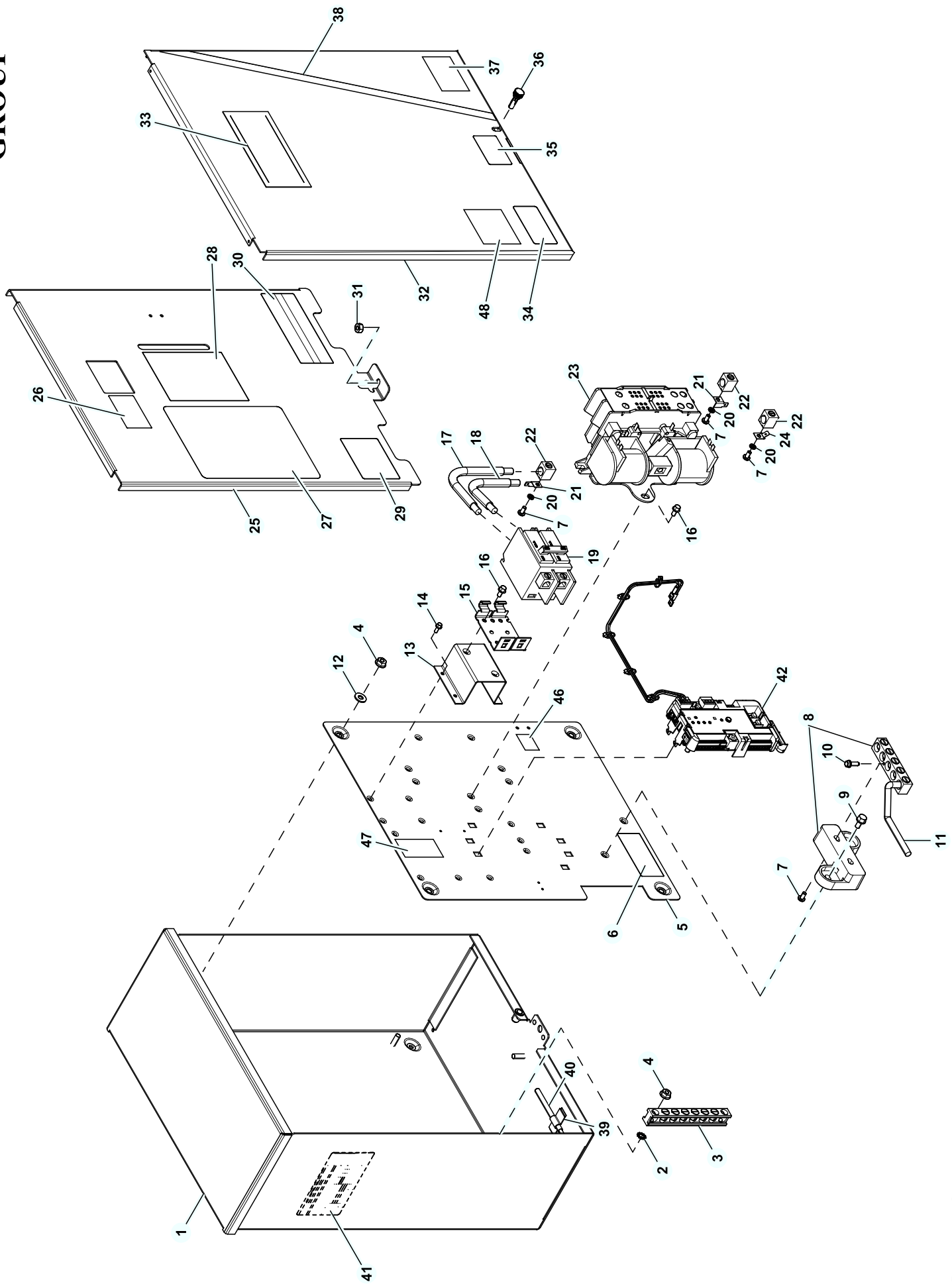


GROUP



EXPLODEDVIEW: EV PWRCELL 100A SE EN

DRAWING#: A0000917291

GROUP

APPLICABLE TO:

ITEM	PART#	QTY.	DESCRIPTION
1	OK01120AL14	1	ENCLOSURE 100/200A XFER SW
2	026850	2	WASHER LOCK EXT 1/4 STL
3	0J8202	1	LUG SLDLSS 2/0-#14 AL9CU
4	OG8411	6	NUT HEX FLANGE WHIZ 1/4-20
5	10000014617	1	SUBPLATE 100/200A XFER SW
6	OK1018	1	DECAL, NEUTRAL CONNECTION
7	036933	6	SCREW PPHM #10-32 X 3/8
8	OK0108	1	ASSY NEUT BLK 100A W/TAP 5POS
9	G090388	2	SCREW HHTT M6-1.0 X 12 ZINC
10	G026902	1	SCREW HHTT #8-32 X 1/4 CZ
11	OK1167	1	WIRE NEUTRAL TO GROUND CONNECTION
12	G022473	4	WASHER FLAT 1/4-M6 STEEL ZINC
13	OK1119	1	RISER 100A SERV ENT
14	0A1495	4	SCREW HHTT M4-0.7 X 10 BP
15	0E7890	1	BRKT CB MTG BACK
16	G074908	6	SCREW HHTT M5-0.8 X 10 BP
17	OG5780B	1	ASSY WIRE 2AWG 6.875" #N2A BLK
18	OG5780A	1	ASSY WIRE 2AWG 5.375" #N1A BLK
19	0E7886H	1	CB 0100A 2P 240V S BQ2 LB
20	022152	6	WASHER LOCK SPRING #10 ZC
21	10000009445	4	90 DEGREE STRAIGHT SPADE CONNECTOR
22	077033	6	LUG SLDLSS 1/0-#14X9/16 AL/CU
23	0L2910	1	XFRSW HSB 100A 2P 250V
24	G074138	1	LUG DIS QK NI-S 10X45 DEG BR/T
25	OK11120AL14	1	COVER INSIDE 100A SE GRAY
26	A0000842394	1	PWRCELL DECALS SERVICE ENTRANCE
27	A0000773150	1	DECAL TEST SEQUENCE 100-200A SE
28	A0000966009	1	DECAL WARN MANUAL OPER HANDLE EN/SP/FR
29	OG3274	1	DECAL LIVE CIRCUIT ENG/FRN/SPN
30	OG3259	1	DECAL TERMINAL SHOCK HZD BI
31	085889	1	NUT HEX 1/4-20 SS
32	OK01130AL14	1	COVER 100/200A XFER SW
33	A0000762108	1	DECAL GENERAC PWRCELL 124X57 MM
34	0H7274	1	DECAL NEC COMPLIANCE
35	10000037322	1	DECAL PROP 65 EN/SP/FR
36	0L6700	1	SCREW THUMB 1/4-20 X 1/2 KNURL
37	10000008602	1	DECAL WCR NEC COMPLIANCE
38	A0000766522	1	DECAL GENERAC PWRCELL STRIPE 495X13 MM
39	OK8254	1	U-CLIP ADHESIVE
40	0E6155	1	PIN ARM EXTENDER
41	0L1950A	1	DATA DECAL TSWs SE
42	A0000520273	1	ASSY MODULE- PWRCELL ATS CONTROLLER
43	028739A	1	TIE WRAP UL 3.9" X .10" BLK (NOT SHOWN)
44	10000005872	1	HARNES 100/200A TS (NOT SHOWN)
45	G057593	1	CABLE TIE MOUNT BLACK (NOT SHOWN)
46	A0000773157	1	PWRCELL DECALS SERVICE ENTRANCE
47	A0000842393	1	PWRCELL DECALS SERVICE ENTRANCE
48	A0000842395	1	PWRCELL DECALS SERVICE ENTRANCE