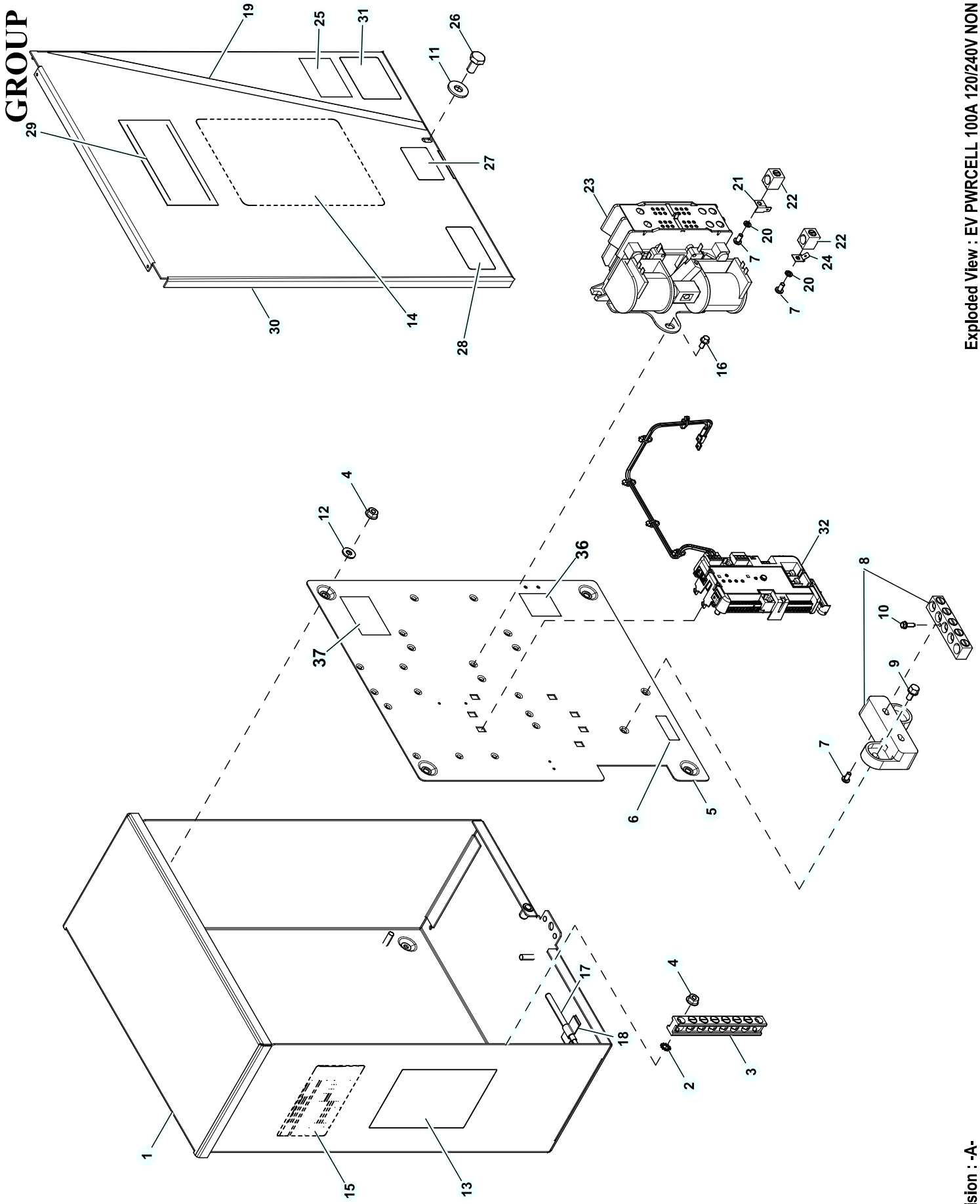


# GROUP



**EXPLODEDVIEW: EV PWRCELL 100A 120/240V NON SE****DRAWING#: A0000917290****GROUP****APPLICABLE TO:**

| ITEM | PART#       | QTY. | DESCRIPTION                              |
|------|-------------|------|--|
| 1    | OK01120AL14 | 1    | ENCLOSURE 100/200A XFER SW               |
| 2    | G026850     | 2    | WASHER LOCK EXT 1/4 STL                  |
| 3    | 0J8202      | 1    | LUG SLDLSS 2/0-#14 AL9CU                 |
| 4    | 0G8411      | 6    | NUT HEX FLANGE WHIZ 1/4-20               |
| 5    | 10000014617 | 1    | SUBPLATE 100/200A XFER SW                |
| 6    | 0A9457      | 1    | DECAL NEUTRAL                            |
| 7    | G036933     | 6    | SCREW PPHM #10-32 X 3/8                  |
| 8    | OK0108      | 1    | ASSY NEUT BLK 100A W/TAP 5POS            |
| 9    | G090388     | 2    | SCREW HHTT M6-1.0 X 12 ZINC              |
| 10   | G026902     | 1    | SCREW HHTT #8-32 X 1/4 CZ                |
| 11   | 0A2115      | 1    | WASHER FLAT NYLON 3/16BS .625 X .062 THK |
| 12   | G022473     | 4    | WASHER FLAT 1/4-M6 STEEL ZINC            |
| 13   | A0000966009 | 1    | DECAL WARN MANUAL OPER HANDLE EN/SP/FR   |
| 14   | A0000773153 | 1    | DECAL TEST SEQUENCE 100/200A NON         |
| 15   | 0L1950      | 1    | DATA DECAL TSWs NON-SE                   |
| 16   | G074908     | 4    | SCREW HHTT M5-0.8 X 10 BP                |
| 17   | 0E6155      | 1    | PIN ARM EXTENDER                         |
| 18   | 0K8254      | 1    | U-CLIP ADHESIVE                          |
| 19   | A0000766522 | 1    | DECAL GENERAC PWRCELL STRIPE 495X13 MM   |
| 20   | G022152     | 6    | WASHER LOCK SPRING #10 ZC                |
| 21   | 10000009445 | 4    | 90 DEGREE STRAIGHT SPADE CONNECTOR       |
| 22   | G077033     | 6    | LUG SLDLSS 1/0-#14X9/16 AL/CU            |
| 23   | 0L2910      | 1    | XFRSW HSB 100A 2P 250V                   |
| 24   | G074138     | 1    | LUG DIS QK NI-S 10X45 DEG BR/T           |
| 25   | 10000008602 | 1    | DECAL WCR NEC COMPLIANCE                 |
| 26   | G085296     | 1    | SCREW HHC 1/4-20 X 1/2 SS                |
| 27   | 10000037322 | 1    | DECAL PROP 65 EN/SP/FR                   |
| 28   | 0H7274      | 1    | DECAL NEC COMPLIANCE                     |
| 29   | A0000762108 | 1    | DECAL GENERAC PWRCELL 124X57 MM          |
| 30   | OK01130AL14 | 1    | COVER 100/200A XFER SW                   |
| 31   | 0G3274      | 1    | DECAL LIVE CIRCUIT ENG/FRN/SPN           |
| 32   | A0000520273 | 1    | ASSY MODULE- PWRCELL ATS CONTROLLER      |
| 33   | 10000005872 | 1    | HARNESS 100/200A TS (NOT SHOWN)          |
| 34   | 028739A     | 1    | TIE WRAP UL 3.9 X .10 BLK (NOT SHOWN)    |
| 35   | G057593     | 1    | CABLE TIE MOUNT BLACK (NOT SHOWN)        |
| 36   | A0000773157 | 1    | PWRCELL DECALS SERVICE ENTRANCE          |
| 37   | A0000842393 | 1    | PWRCELL DECALS SERVICE ENTRANCE          |