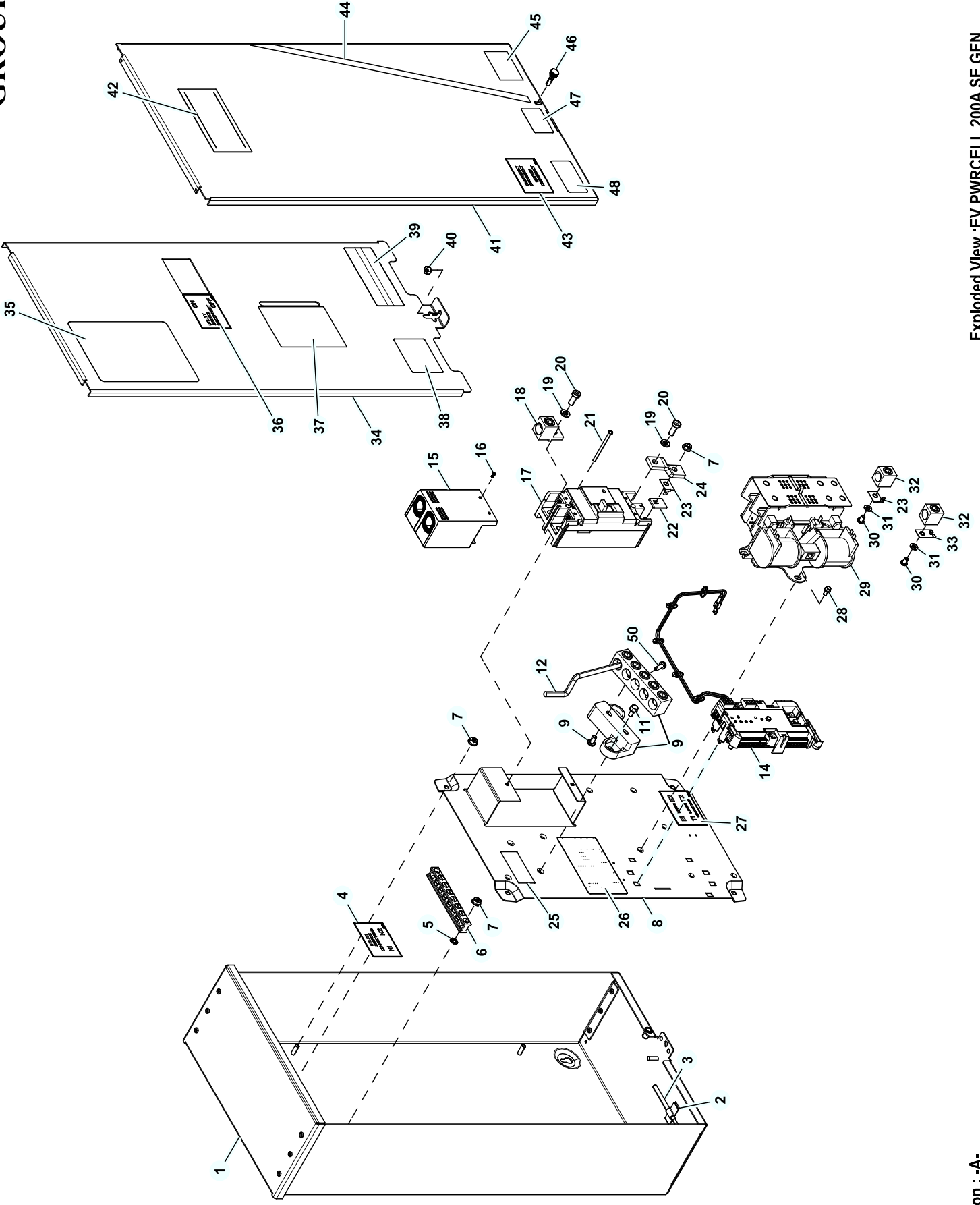


GROUP



EXPLODEDVIEW: EV PWRCELL 200A SE GEN

DRAWING#: A0000917289

GROUP

APPLICABLE TO:

| ITEM | PART# | QTY. | DESCRIPTION |
|------|-------------|------|---|
| 1 | 10000000818 | 1 | AL14 ENCLOSURE 200A SE XFERSW |
| 2 | OK8254 | 1 | U-CLIP ADHESIVE |
| 3 | OE6155 | 1 | PIN ARM EXTENDER |
| 4 | A0000842393 | 1 | PWRCELL DECALS SERVICE ENTRANCE |
| 5 | G026850 | 2 | WASHER LOCK EXT 1/4 STL |
| 6 | OJ8202 | 1 | LUG SLDLSS 2/0-#14 AL9CU |
| 7 | OG8411 | 8 | NUT HEX FLANGE WHIZ 1/4-20 |
| 8 | 10000000825 | 1 | SUBPLATE,200A SE XFER SW |
| 9 | OK0108A | 1 | ASSY NEUT BLK 200-400A W/TAP |
| 10 | O28739A | 1 | TIE WRAP UL 3.9" X .10" BLK (NOT SHOWN) |
| 11 | G090388 | 2 | SCREW HHTT M6-1.0 X 12 ZINC |
| 12 | OK1081 | 1 | WIRE NEUTRAL/GND CONNECTION |
| 13 | 10000005872 | 1 | HARNES 100/200A TS (NOT SHOWN) |
| 14 | A0000520273 | 1 | ASSY MODULE-PWRCELL ATS CONTROLLER |
| 15 | OK8414 | 1 | CB TERMINAL COVER 2 POLE 240V FNGR SAFE |
| 16 | OK8628 | 2 | SCREW PFHM 4-24 X 5/16 TCS |
| 17 | OK0133 | 1 | CB 200A 2POLE 240V 225AF |
| 18 | OH6306 | 2 | LUG SLDLSS 350 MCM-6 AL/CU |
| 19 | G022129 | 4 | WASHER LOCK SPRING 5/16 ZC |
| 20 | G049897 | 4 | SCREW SHC LOW M8-1.25 X 20 G8 |
| 21 | OK0973 | 2 | SCREW RHM #8-32 X 2-1/2 |
| 22 | OG4413 | 2 | SPACER 200 AMP TRANSFER SWITCH |
| 23 | OE6033 | 4 | 90 DEGREE DN SPADE CONNECTOR |
| 24 | OK0130 | 2 | BUSBAR 200A TRANSFER SW N1,N2 |
| 25 | OK1018 | 1 | DECAL, NEUTRAL CONNECTION |
| 26 | OL1950A | 1 | DATA DECAL TSWs SE |
| 27 | A0000773157 | 1 | PWRCELL DECALS SERVICE ENTRANCE |
| 28 | G074908 | 4 | SCREW HHTT M5-0.8 X 10 BP |
| 29 | OL2911 | 1 | XFERSW HSB 200A 2P 250V |
| 30 | OF1252 | 4 | SCREW BHSC 1/4-20 X 3/8 |
| 31 | G022097 | 4 | WASHER LOCK SPRING 1/4 ZC |
| 32 | OE3375 | 4 | LUG SLDLSS 250-#6 AL/CU |
| 33 | OE6034 | 1 | STRAIGHT SPADE CONNECTOR |
| 34 | 10000000819 | 1 | COVER INSIDE 200A SE XFER SW |
| 35 | A0000773150 | 1 | DECAL TEST SEQUENCE 100-200A SE |
| 36 | A0000842394 | 1 | PWRCELL DECALS SERVICE ENTRANCE |
| 37 | A0000966009 | 1 | DECAL WARN MANUAL OPER HANDLE EN/SP/FR |
| 38 | OG3274 | 1 | DECAL LIVE CIRCUIT ENG/FRN/SPN |
| 39 | OG3259 | 1 | DECAL TERMINAL SHOCK HZD BI |
| 40 | G085889 | 1 | NUT HEX 1/4-20 SS |
| 41 | 10000000831 | 1 | AL14 COVER 200A SE XFERSW |
| 42 | A0000762108 | 1 | DECAL GENERAC PWRCELL 124X57 MM |
| 43 | A0000842395 | 1 | PWRCELL DECALS SERVICE ENTRANCE |
| 44 | A0000766522 | 1 | DECAL GENERAC PWRCELL STRIPE 495X13 MM |
| 45 | 10000008602 | 1 | DECAL WCR NEC COMPLIANCE |
| 46 | OL6700 | 1 | SCREW THUMB 1/4-20 X 1/2 KNURL |
| 47 | 10000037322 | 1 | DECAL PROP 65 EN/SP/FR |
| 48 | OH7274 | 1 | DECAL NEC COMPLIANCE |
| 49 | G057593 | 1 | CABLE TIE MOUNT BLACK (NOT SHOWN) |
| 50 | G026902 | 1 | SCREW HHTT #8-32 X 1/4 CZ |