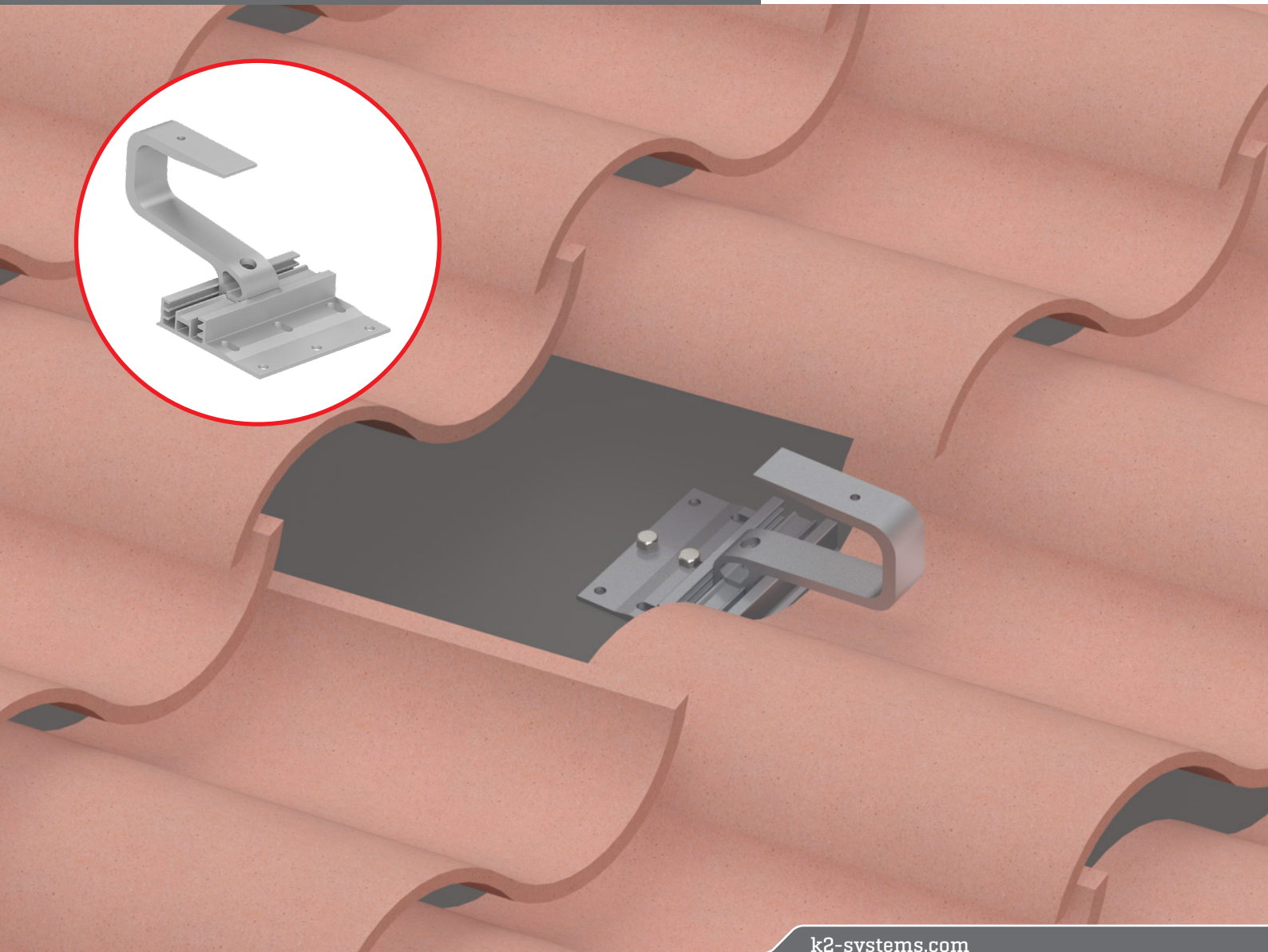
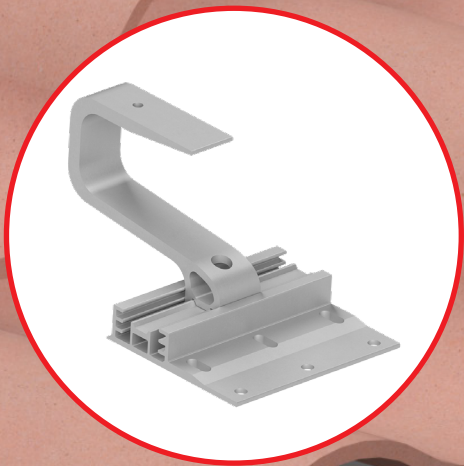


We support PV systems  
Formerly Everest Solar Systems 

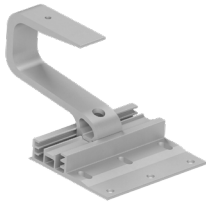


# Tile Hook 3S

QUICK GUIDE



# Components



Part Number	Description
4001294	Tile Hook 3S Wide Base w/ Hardware

Kit includes:



**SingleHook Top**  
Material: aluminum  
Finish: mill



**SingleHook Base**  
Material: aluminum  
Finish: mill

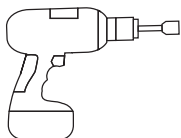
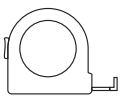


**Lag Screws w/ EPDM Washers**  
Material: stainless steel



**T-Bolt & Hex Nut**  
Material: stainless steel

# Tools overview



Torque wrench  
▶ 10-50 ft-lbs



13 mm dep socket  
▶ Torque 10 ft-lbs

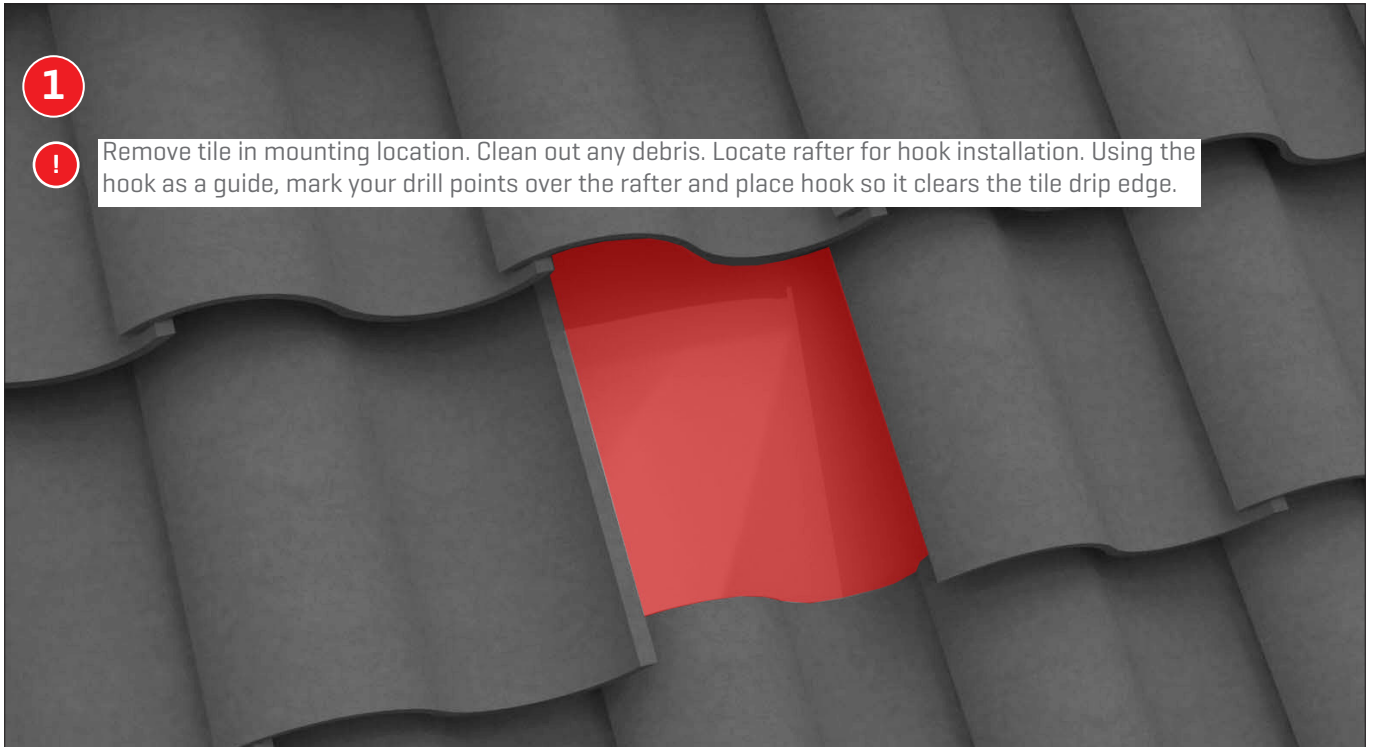
# Assembly



1



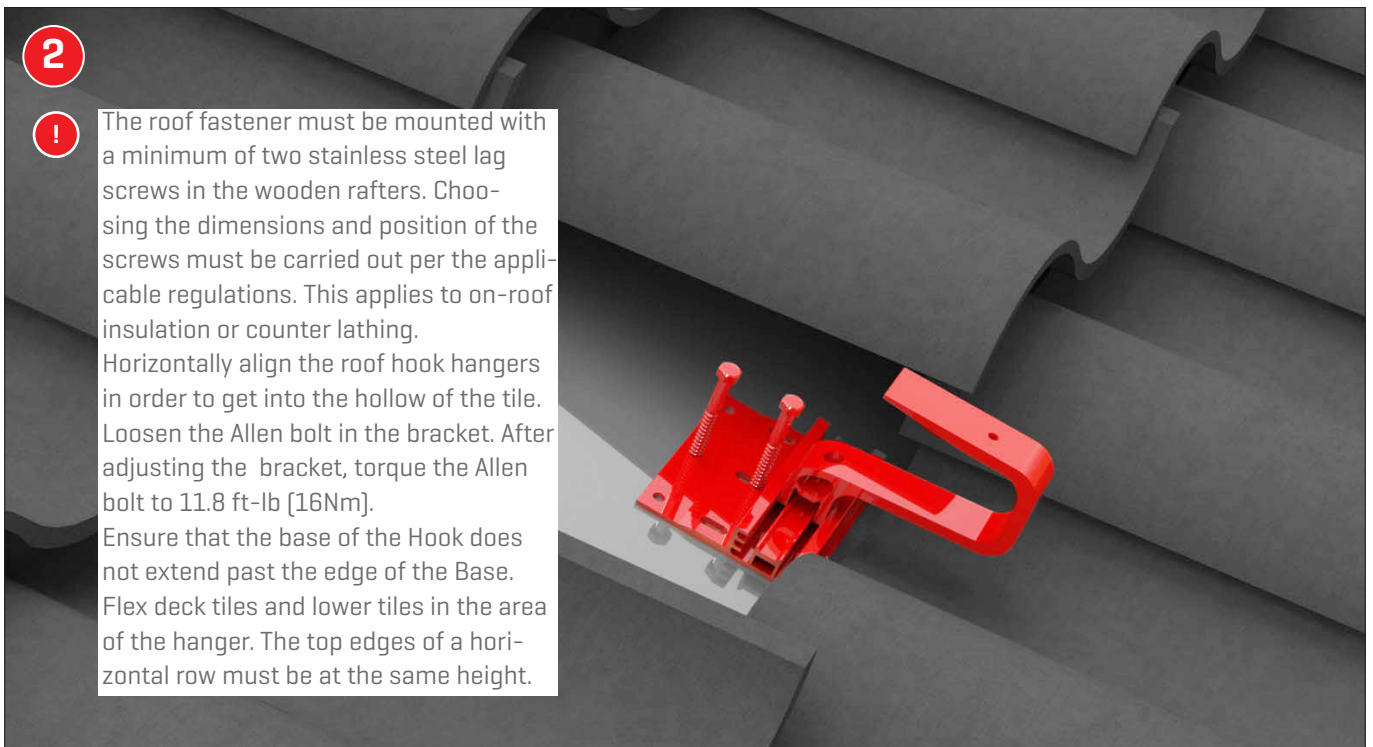
Remove tile in mounting location. Clean out any debris. Locate rafter for hook installation. Using the hook as a guide, mark your drill points over the rafter and place hook so it clears the tile drip edge.



2



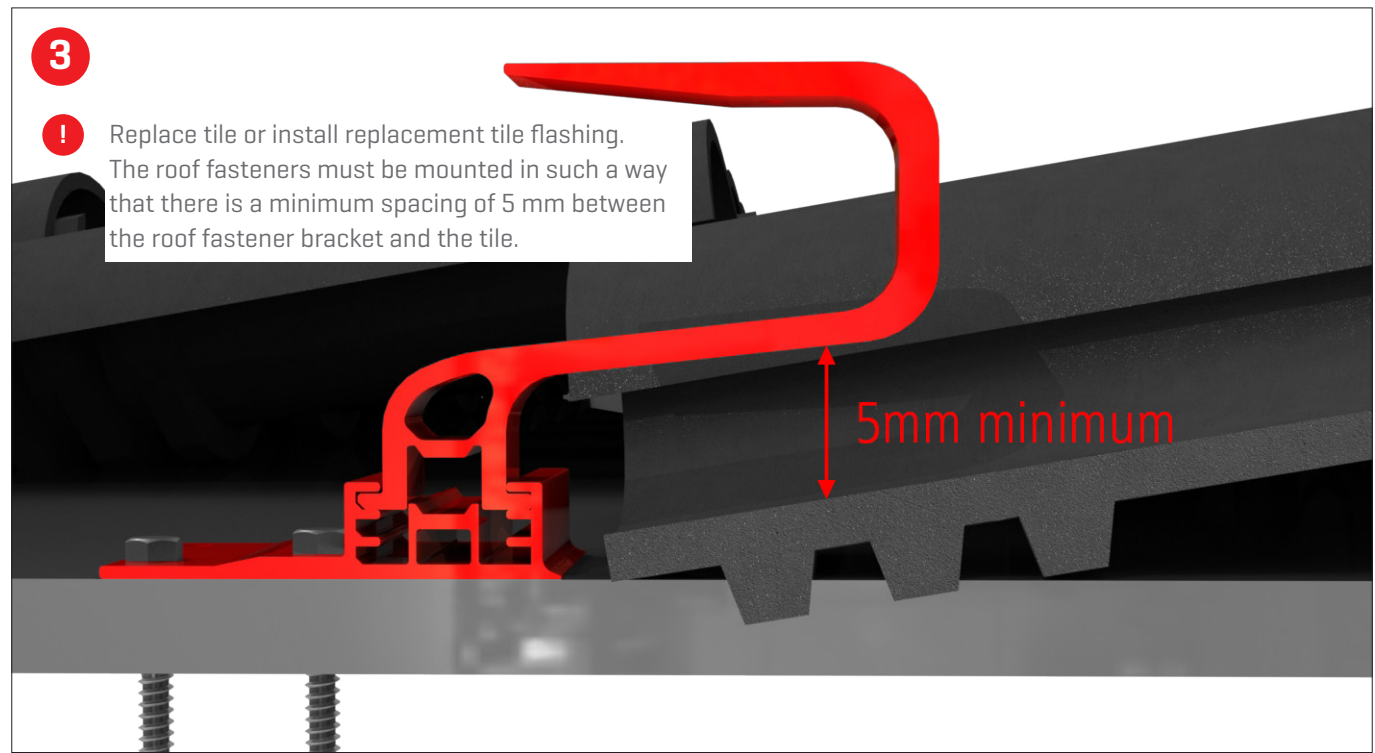
The roof fastener must be mounted with a minimum of two stainless steel lag screws in the wooden rafters. Choosing the dimensions and position of the screws must be carried out per the applicable regulations. This applies to on-roof insulation or counter lathing. Horizontally align the roof hook hangers in order to get into the hollow of the tile. Loosen the Allen bolt in the bracket. After adjusting the bracket, torque the Allen bolt to 11.8 ft-lb [16Nm]. Ensure that the base of the Hook does not extend past the edge of the Base. Flex deck tiles and lower tiles in the area of the hanger. The top edges of a horizontal row must be at the same height.



3



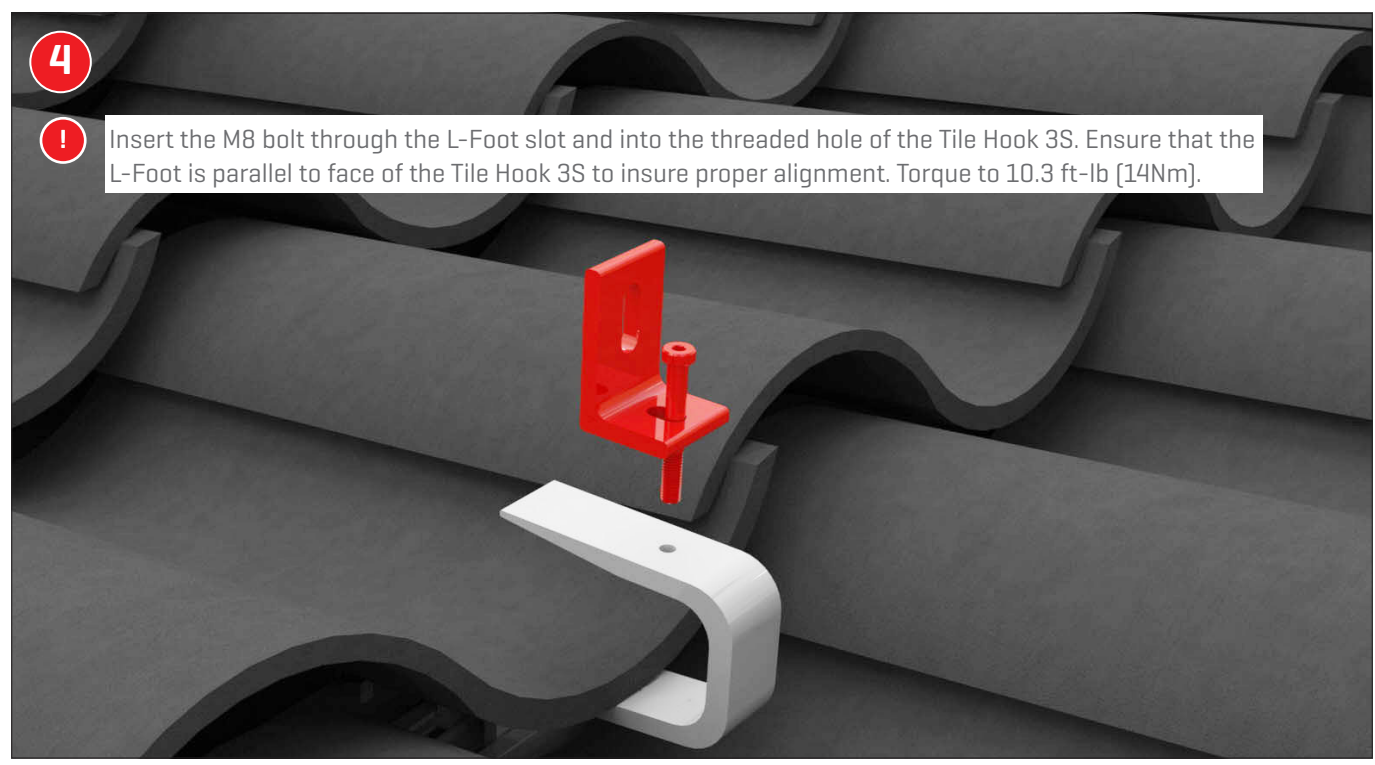
Replace tile or install replacement tile flashing.  
The roof fasteners must be mounted in such a way that there is a minimum spacing of 5 mm between the roof fastener bracket and the tile.



4



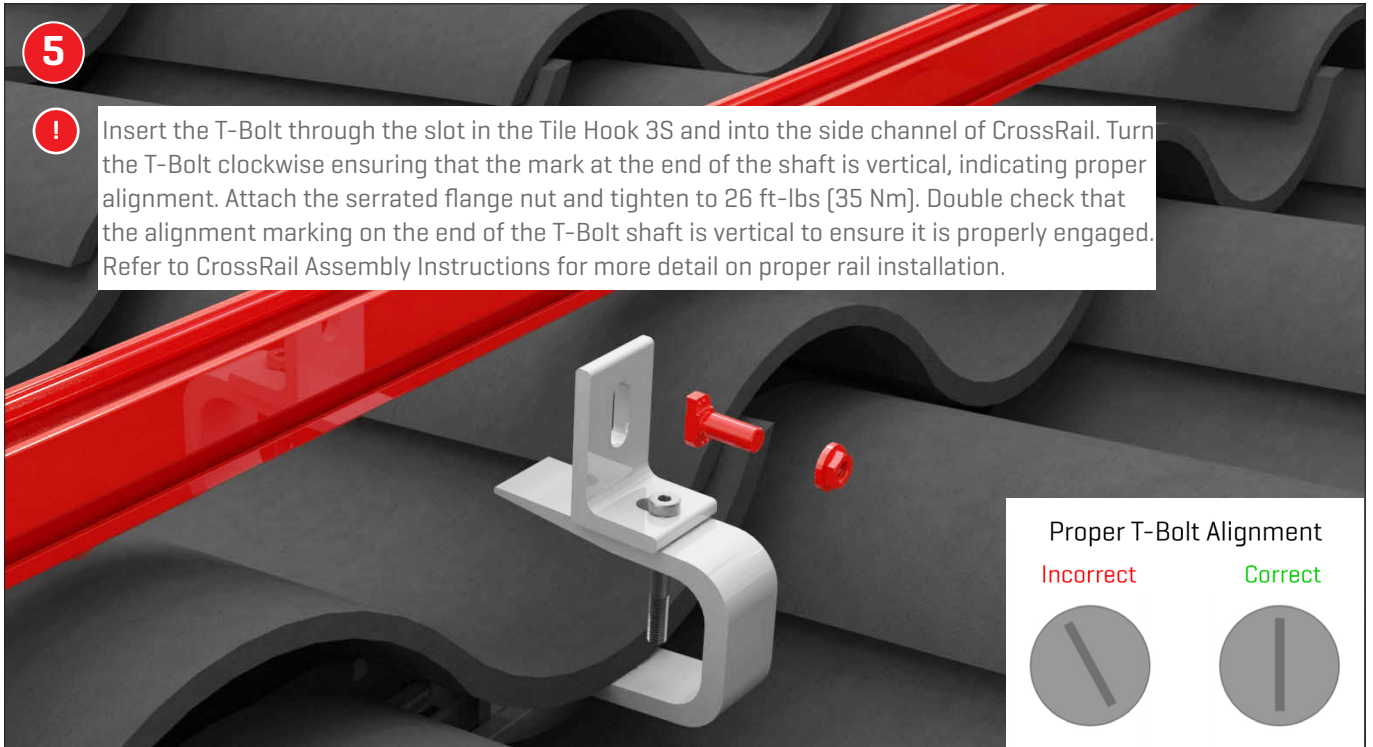
Insert the M8 bolt through the L-Foot slot and into the threaded hole of the Tile Hook 3S. Ensure that the L-Foot is parallel to face of the Tile Hook 3S to insure proper alignment. Torque to 10.3 ft-lb [14Nm].



5



Insert the T-Bolt through the slot in the Tile Hook 3S and into the side channel of CrossRail. Turn the T-Bolt clockwise ensuring that the mark at the end of the shaft is vertical, indicating proper alignment. Attach the serrated flange nut and tighten to 26 ft-lbs [35 Nm]. Double check that the alignment marking on the end of the T-Bolt shaft is vertical to ensure it is properly engaged. Refer to CrossRail Assembly Instructions for more detail on proper rail installation.



Proper T-Bolt Alignment

Incorrect

Correct

