

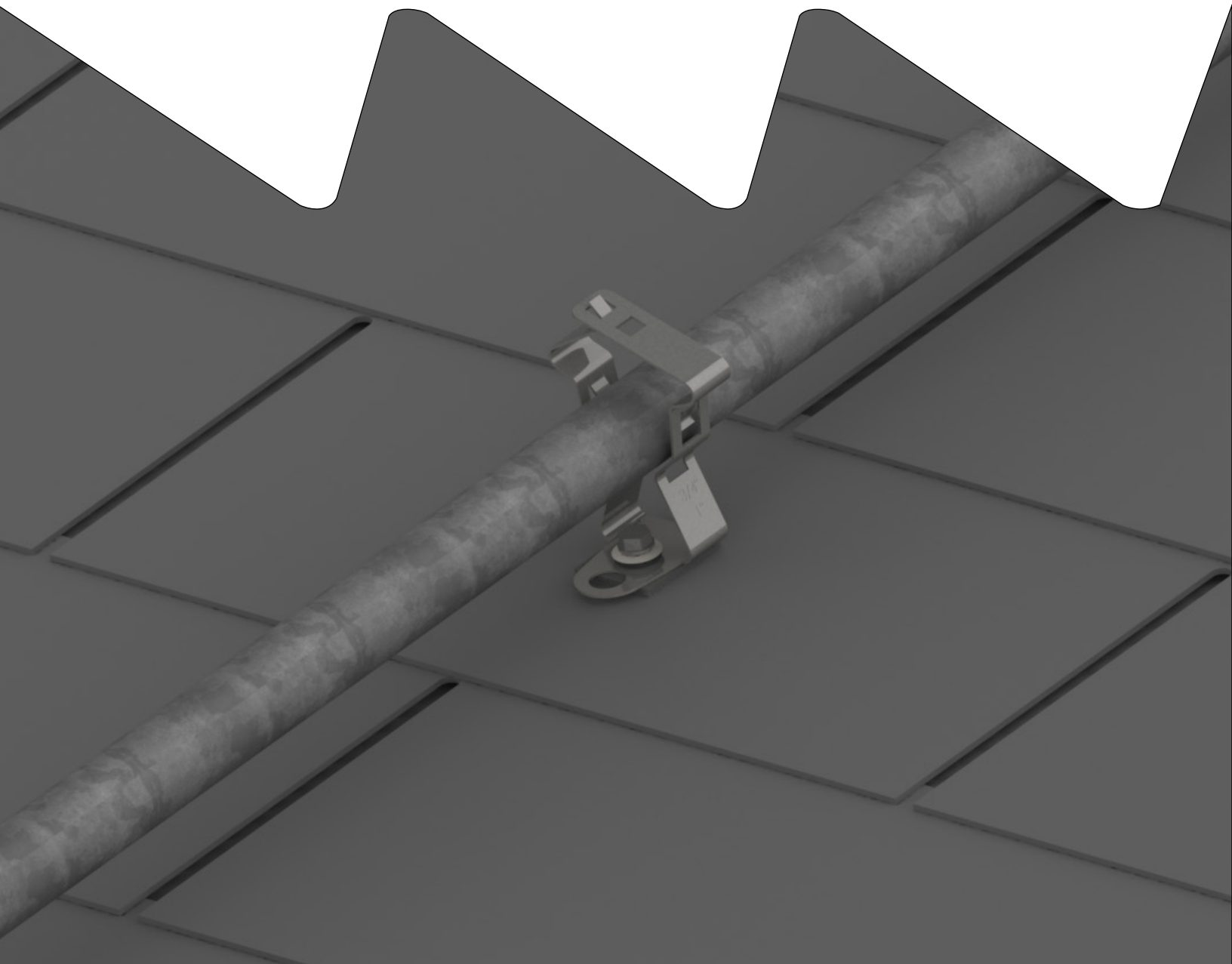


Connecting Strength

# K2 Conduit Clamp Kit, w/EverSeal



**QUICK GUIDE**



# Components

1 4000715



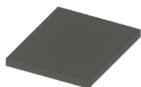
K2 Conduit Clamp, Mill

1 4000115



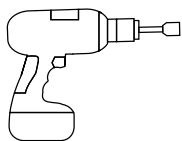
Splice Foot Screw

1 4000221



K2 Conduit Clamp EverSeal

# Tools

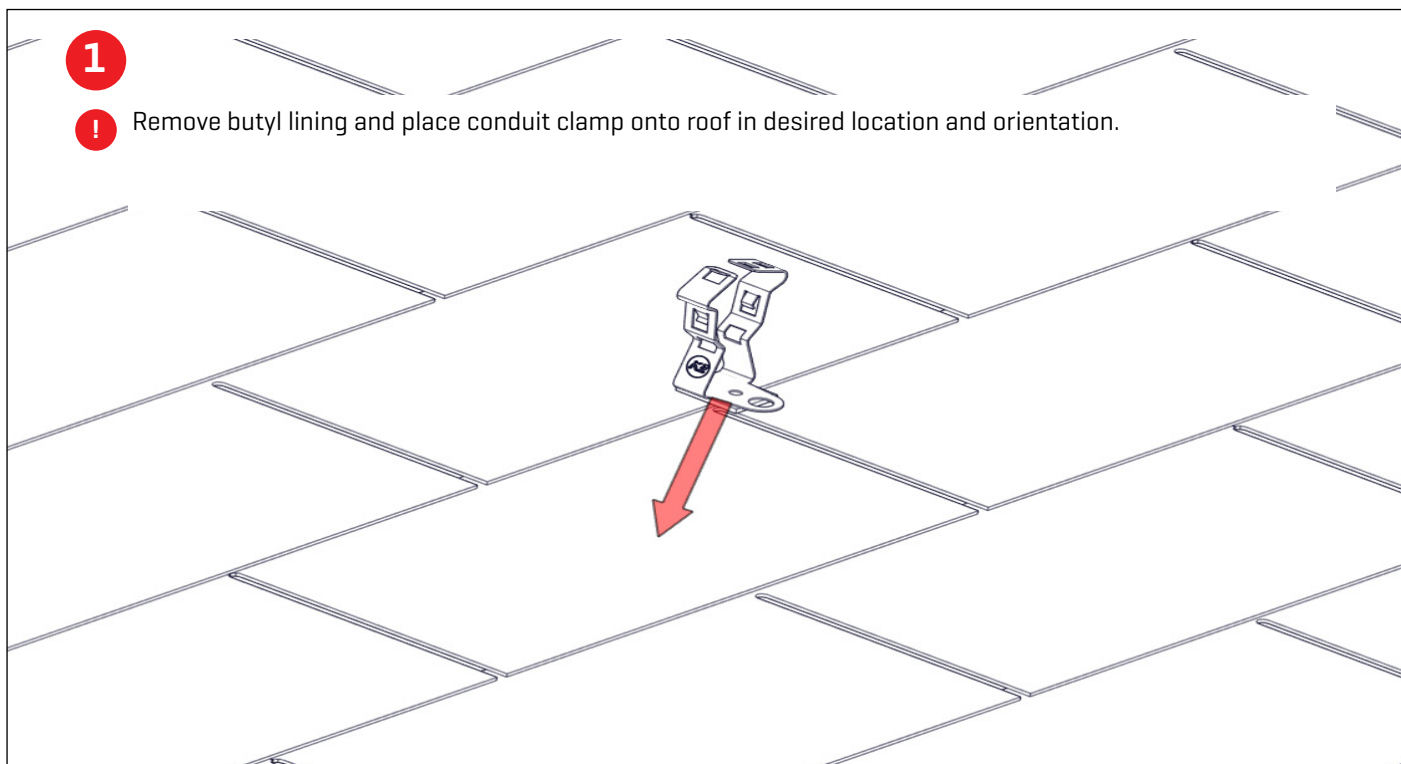


5/16" Nut Driver  
(For roof attachment screw)

1



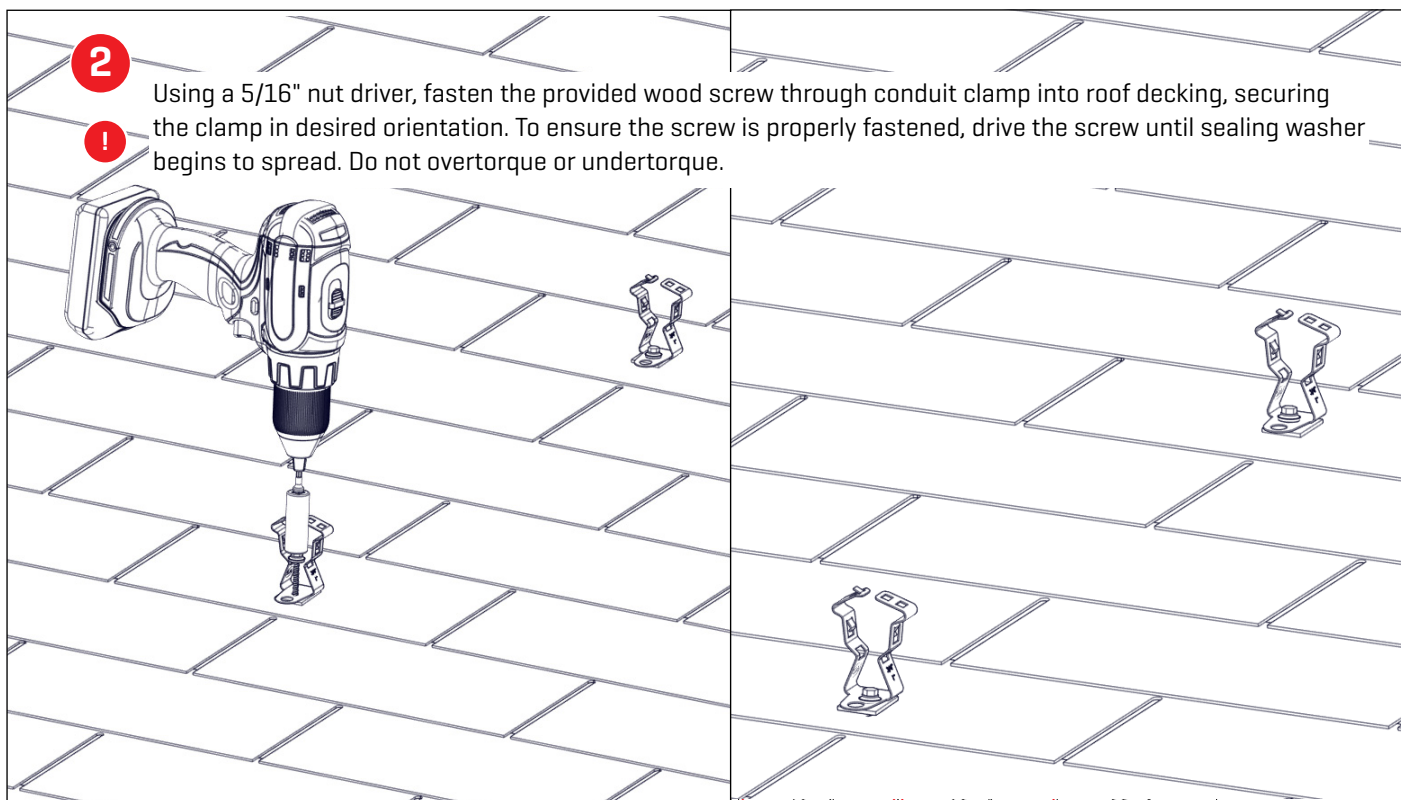
Remove butyl lining and place conduit clamp onto roof in desired location and orientation.



2



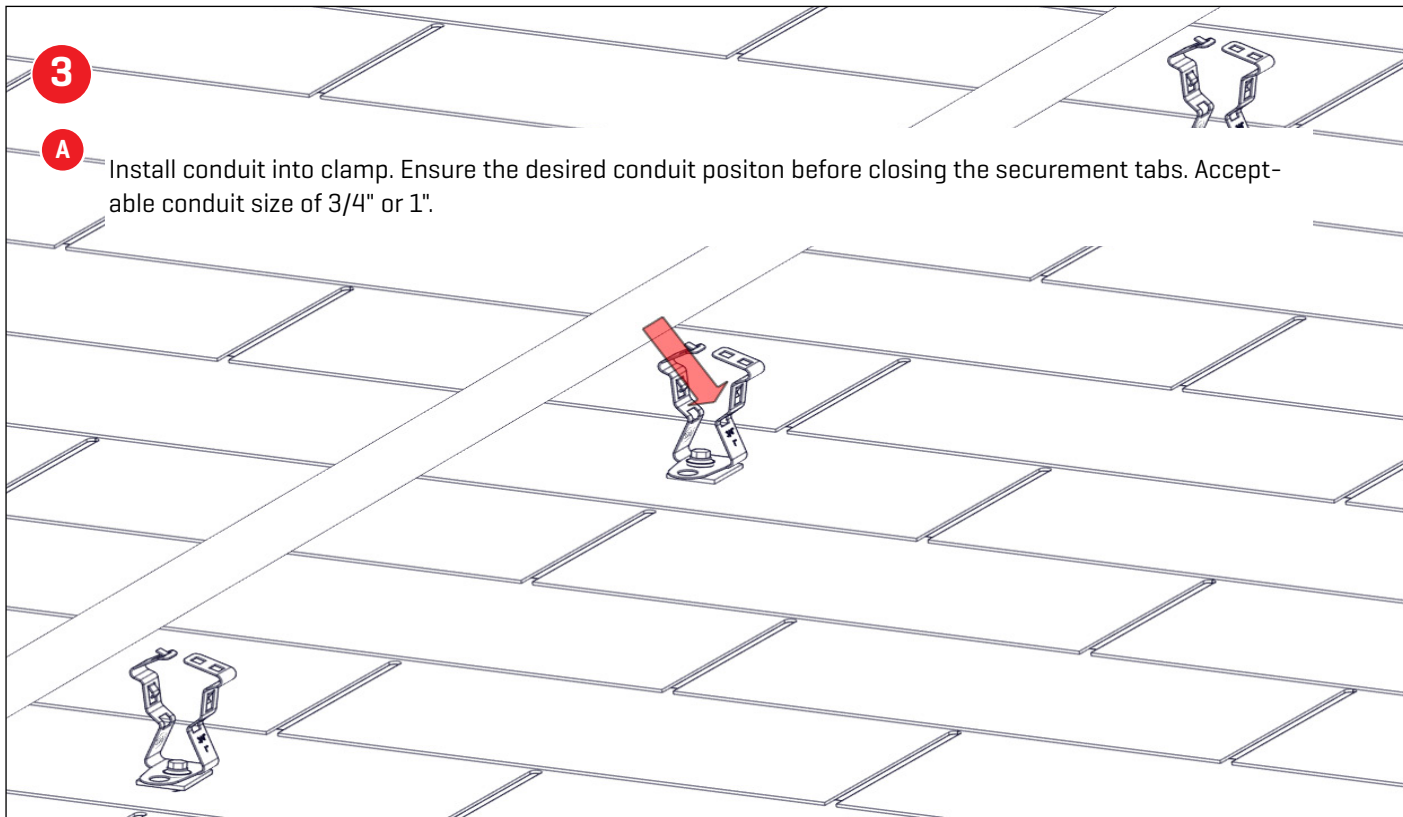
Using a 5/16" nut driver, fasten the provided wood screw through conduit clamp into roof decking, securing the clamp in desired orientation. To ensure the screw is properly fastened, drive the screw until sealing washer begins to spread. Do not overtorque or undertorque.



3

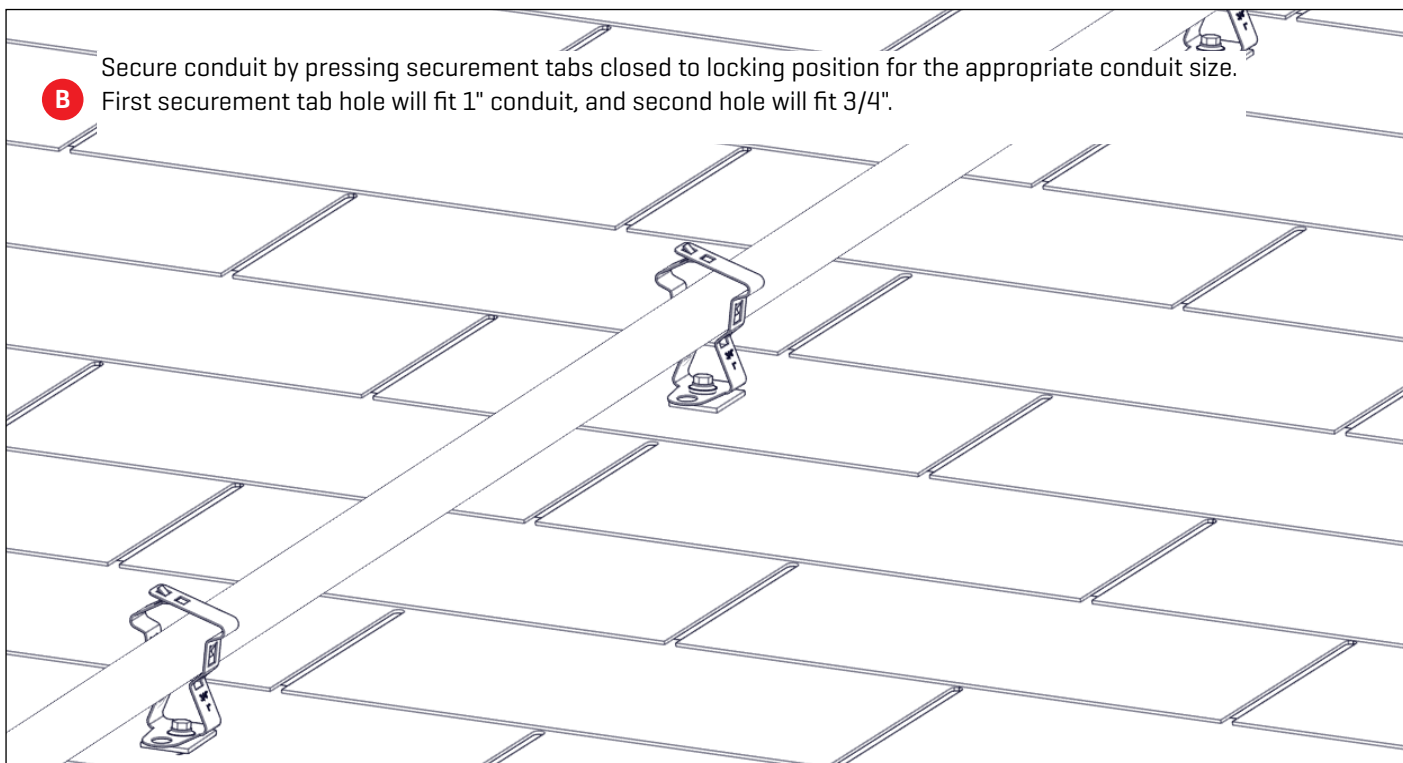
A

Install conduit into clamp. Ensure the desired conduit position before closing the securement tabs. Acceptable conduit size of 3/4" or 1".



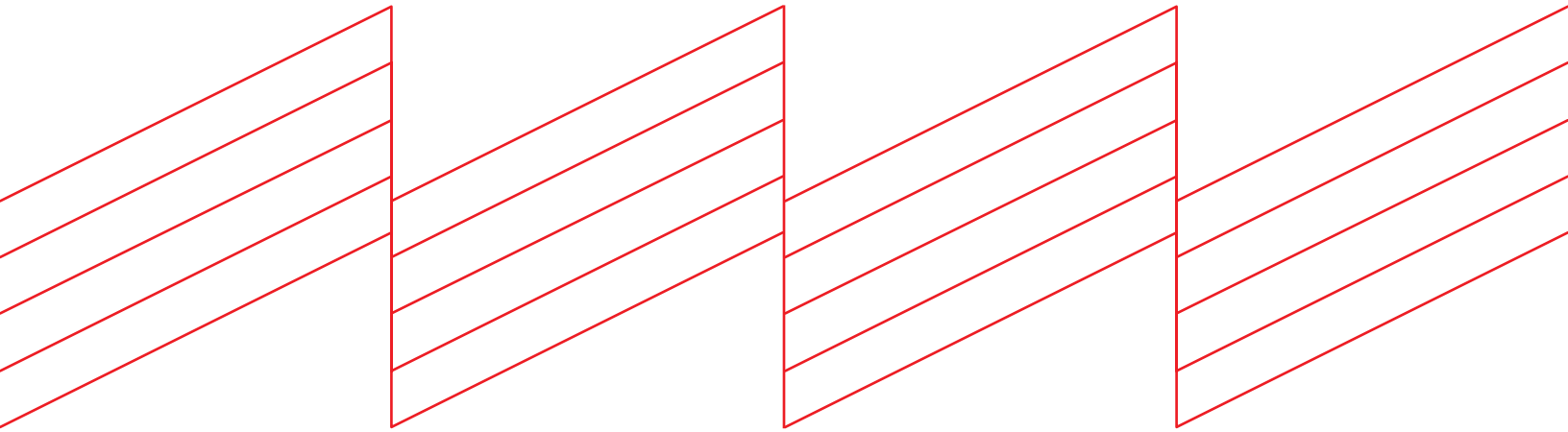
B

Secure conduit by pressing securement tabs closed to locking position for the appropriate conduit size. First securement tab hole will fit 1" conduit, and second hole will fit 3/4".





# Connecting Strength



## K2 Systems, LLC

4665 North Ave. Suite I • Oceanside, CA 92056 •  
USA +1.760.301.5300 • [infous@k2-systems.com](mailto:infous@k2-systems.com)  
[www.k2-systems.com](http://www.k2-systems.com)

K2 Conduit Clamp Kit, w/EverSeal Quick Guide V1 | 0423 • Subject to change.  
Product illustrations are exemplary and may differ from the original.