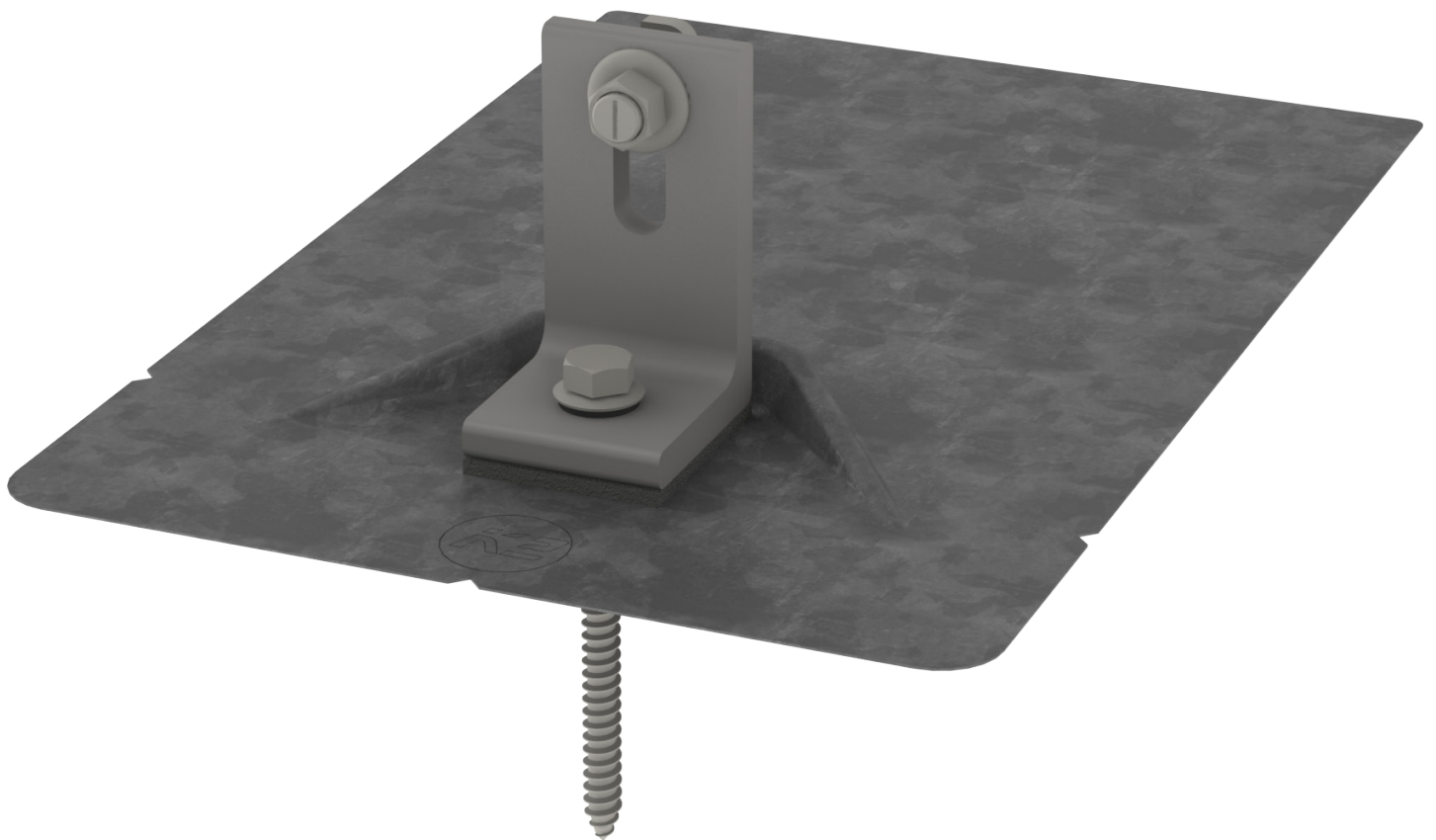


We support PV systems
Formerly Everest Solar Systems 

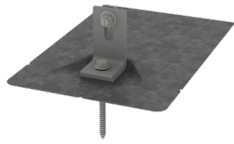


K2 Flash Comp Kit

QUICK GUIDE

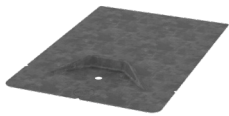


Components



Part Number	Description
4000156	K2 Flash Comp Kit, Mill
4000157	K2 Flash Comp Kit, Dark

Kit includes:



K2 Flash Comp Flashing
Material: Galvalume
Finish: Mill or dark



K2 Flash L-Foot w/ Butyl
Material: Aluminum
Finish: Mill or dark

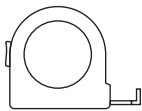


5/16" Lag Screw w/ Sealing Washer
Material: stainless steel, EPDM insert



T-Bolt & Hex Nut
Material: stainless steell

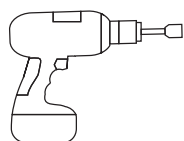
Tools overview



≥ 10 ft



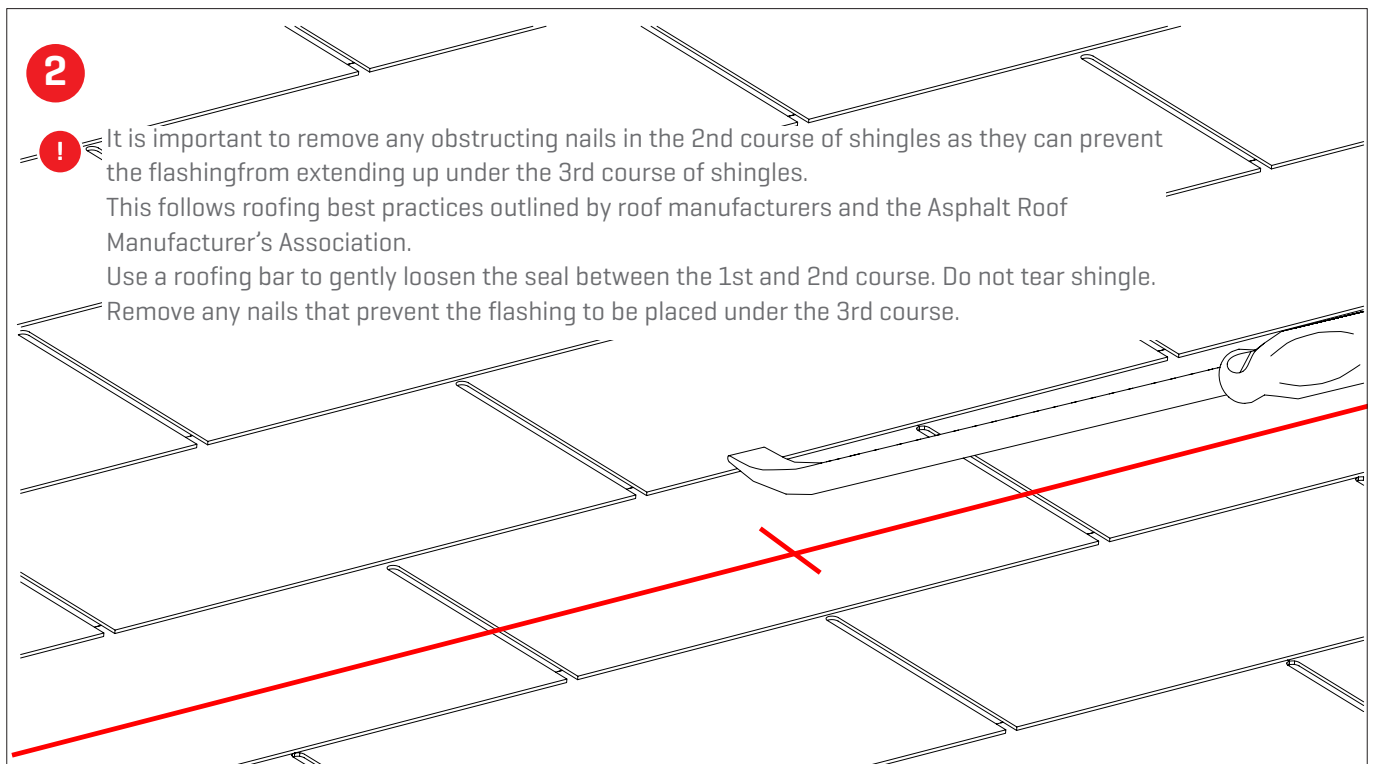
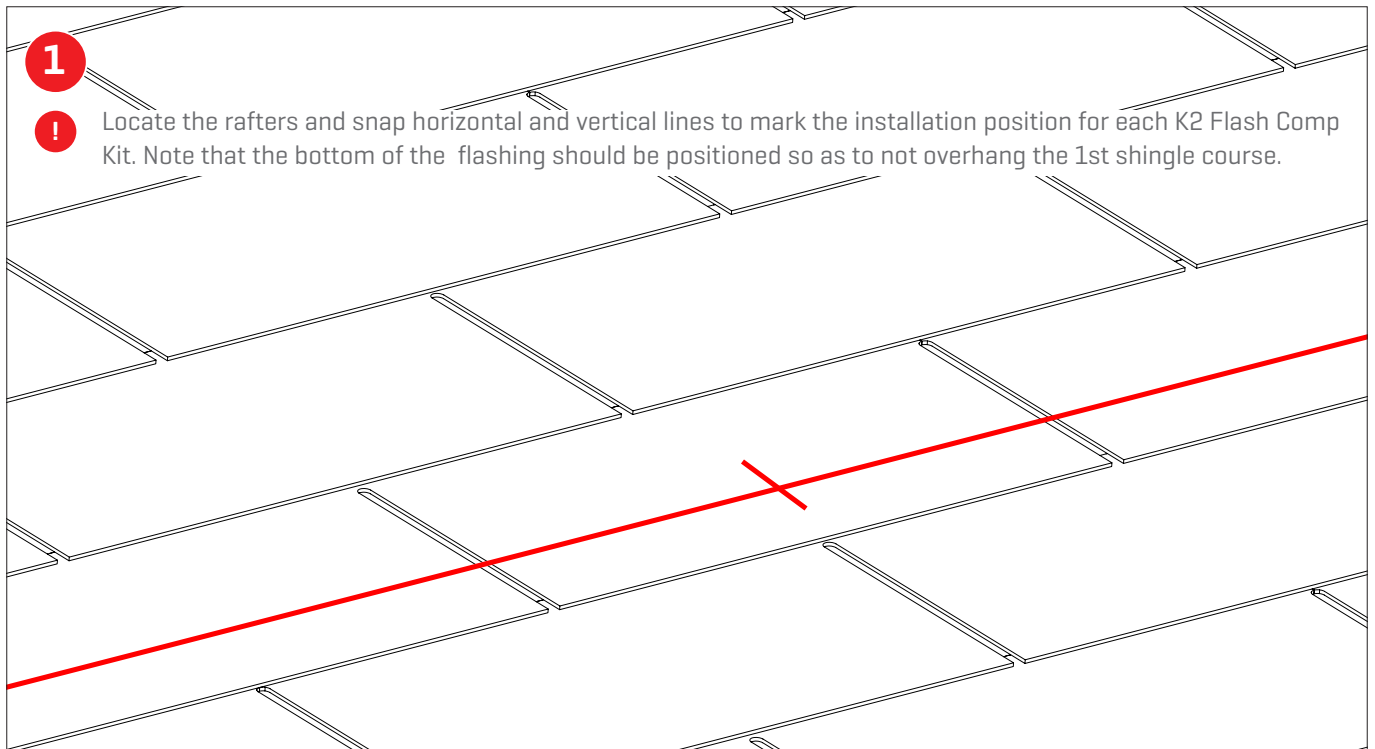
≥ 6,0 m

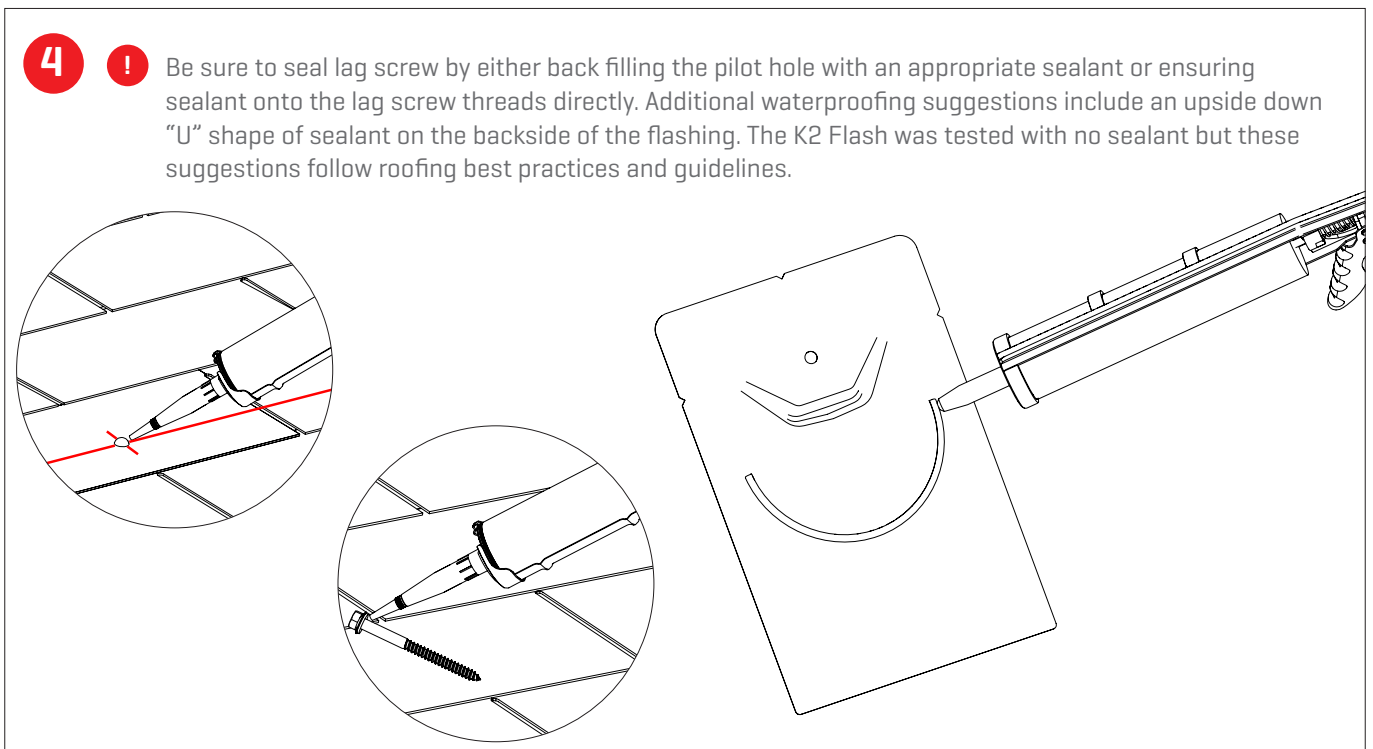
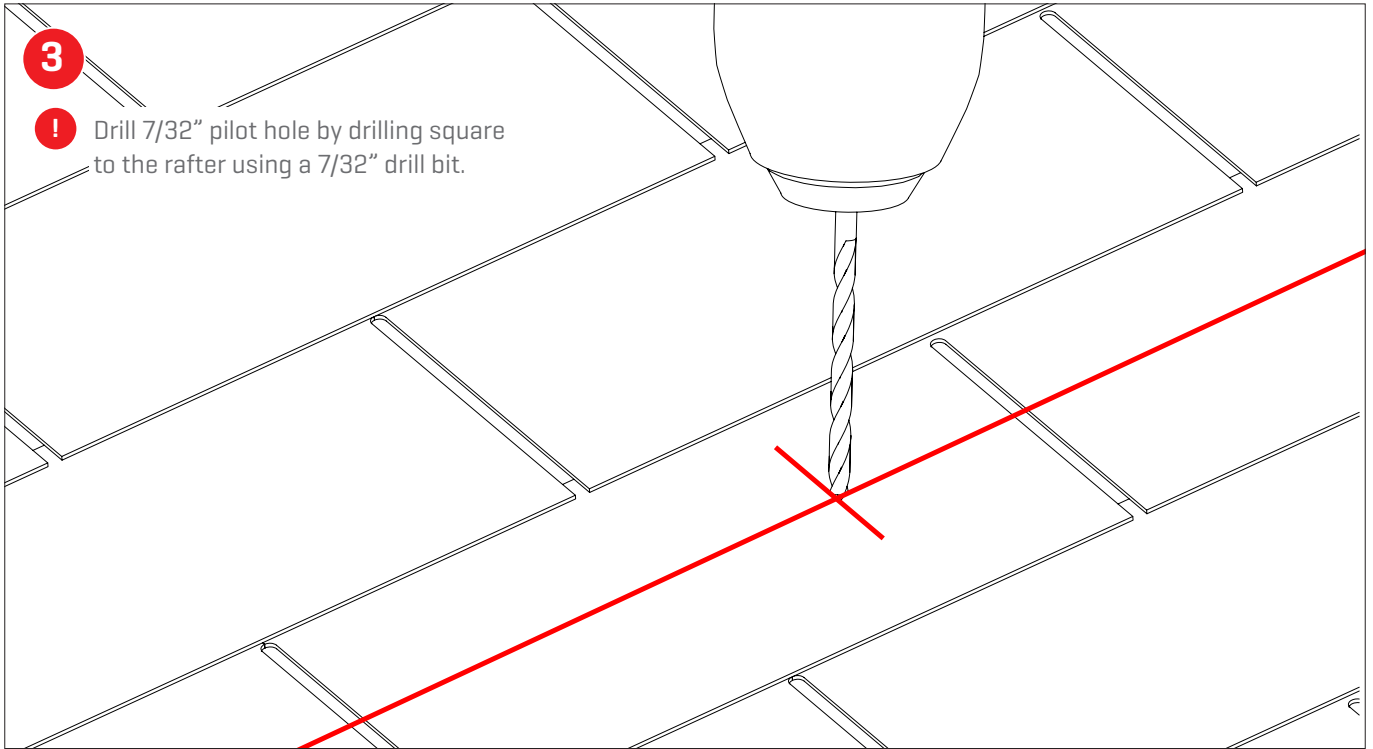


13 mm dep socket
▶ Torque 10 ft-lbs



Assembly

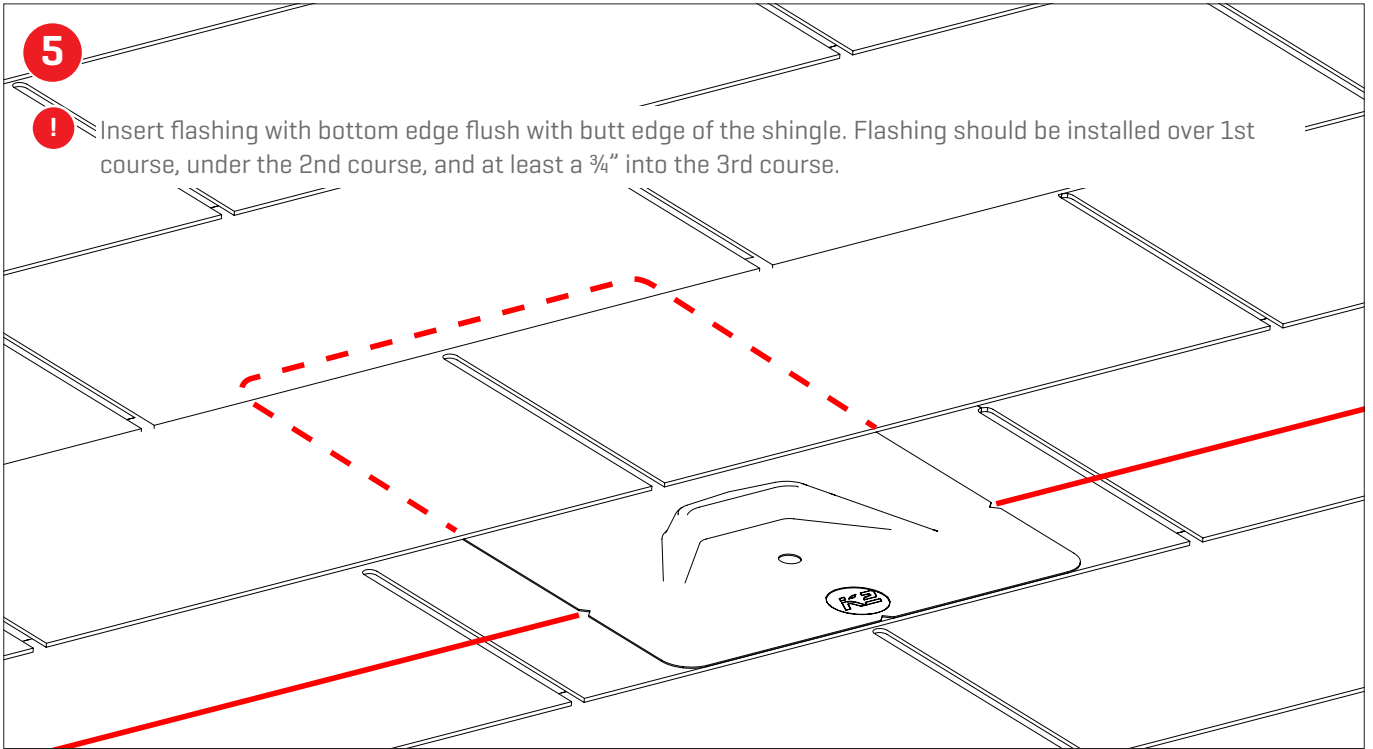




5



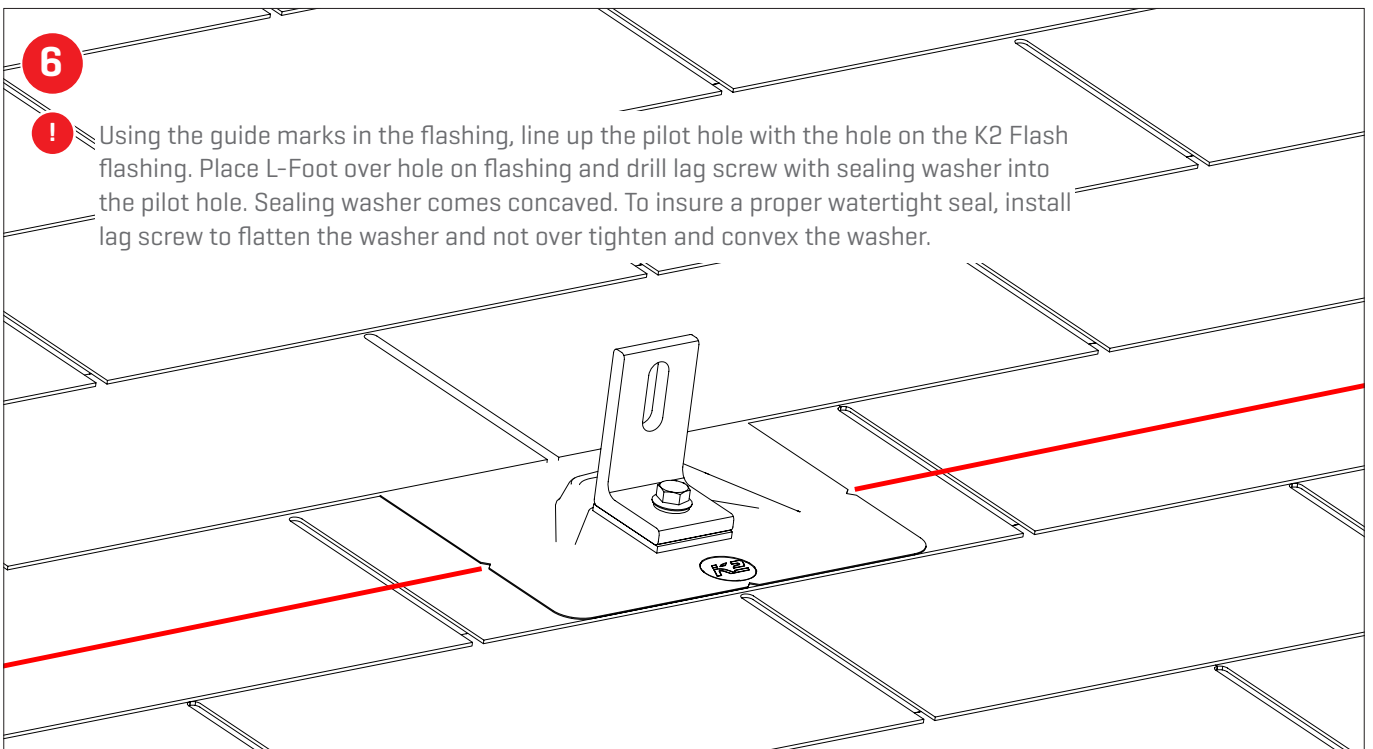
Insert flashing with bottom edge flush with butt edge of the shingle. Flashing should be installed over 1st course, under the 2nd course, and at least a $\frac{3}{4}$ " into the 3rd course.



6



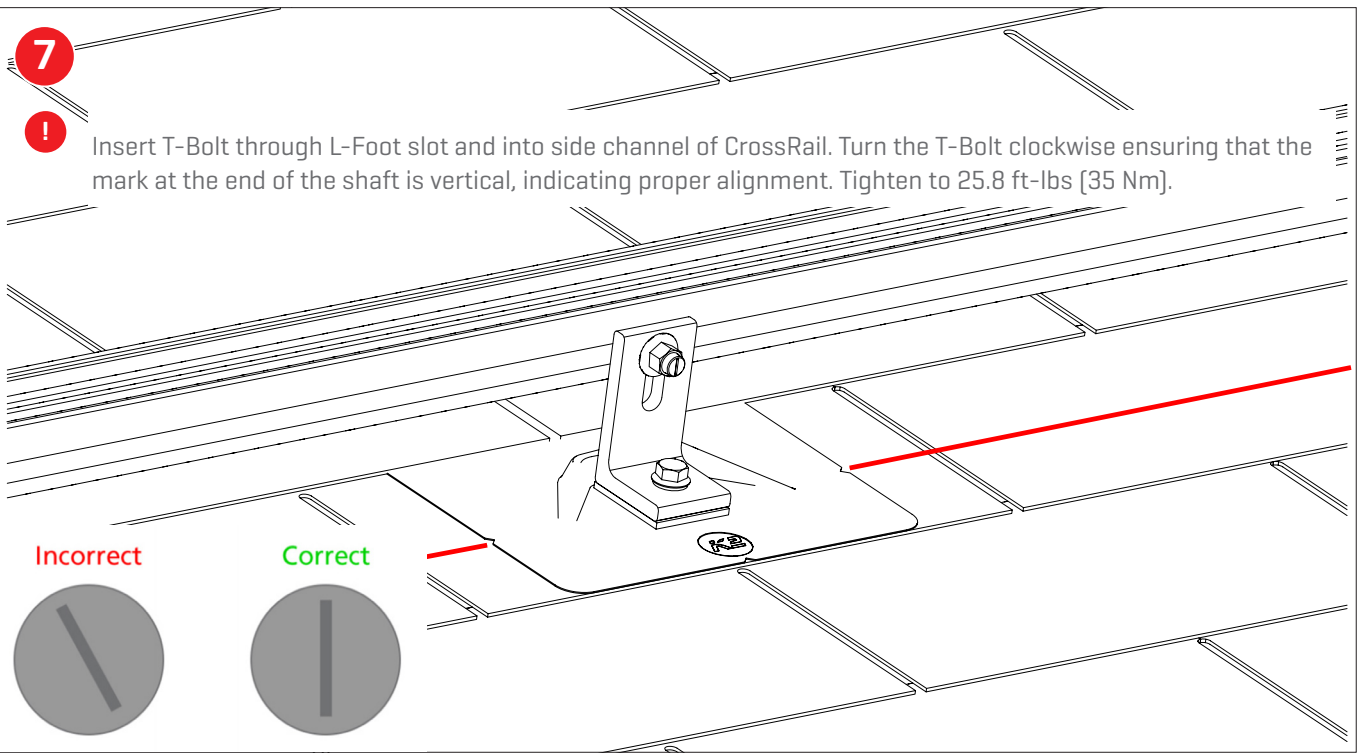
Using the guide marks in the flashing, line up the pilot hole with the hole on the K2 Flash flashing. Place L-Foot over hole on flashing and drill lag screw with sealing washer into the pilot hole. Sealing washer comes concaved. To insure a proper watertight seal, install lag screw to flatten the washer and not over tighten and convex the washer.



7



Insert T-Bolt through L-Foot slot and into side channel of CrossRail. Turn the T-Bolt clockwise ensuring that the mark at the end of the shaft is vertical, indicating proper alignment. Tighten to 25.8 ft-lbs [35 Nm].



Incorrect

Correct