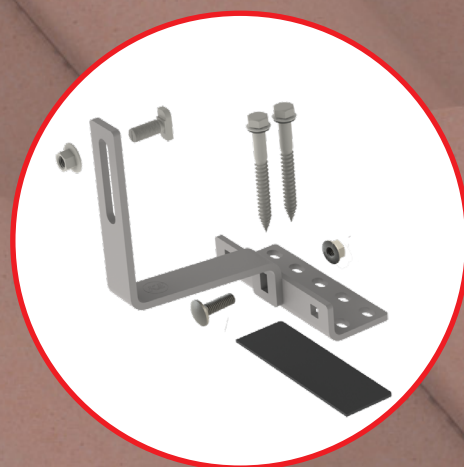
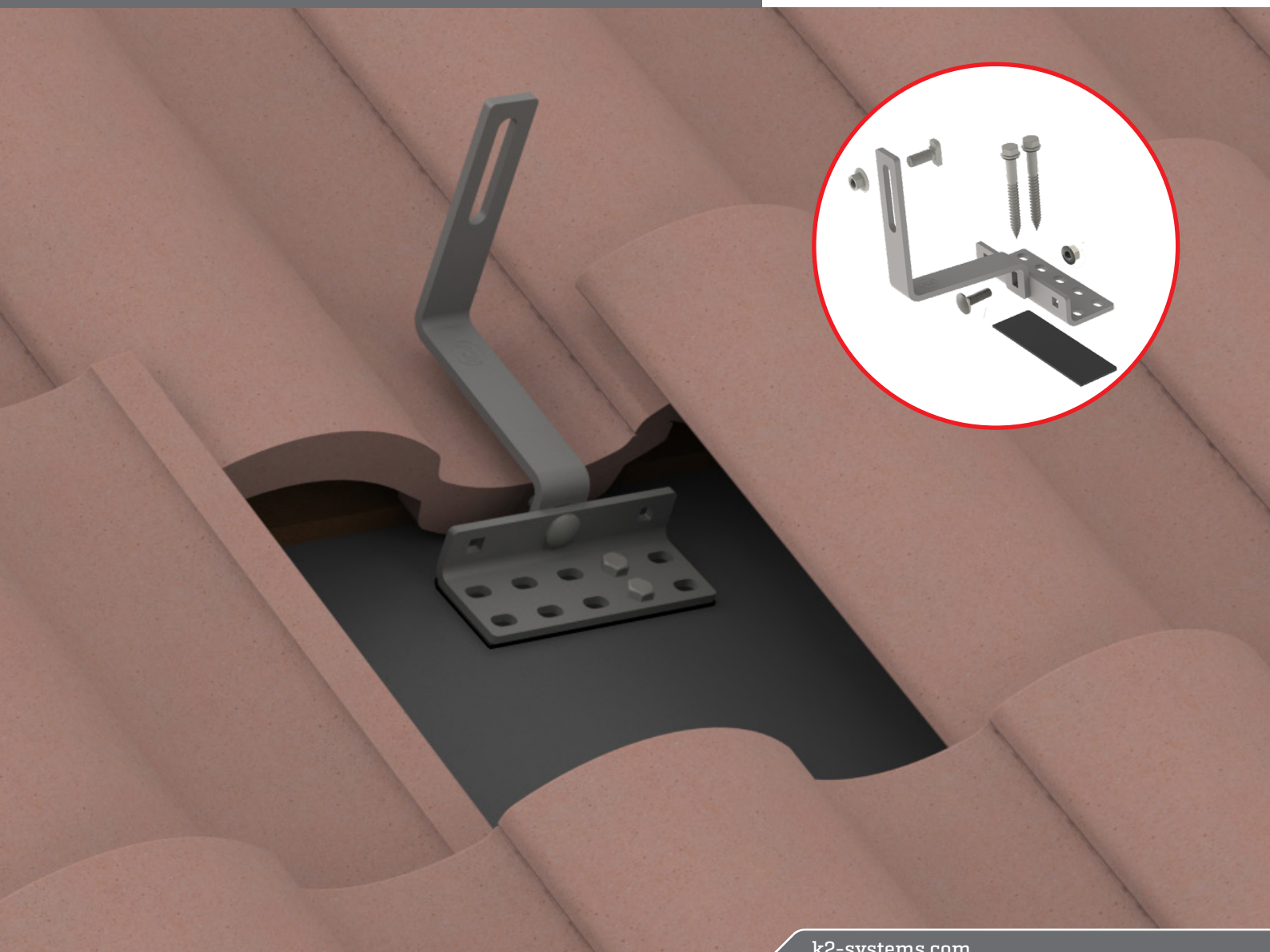


Universal Standard Hook +2, 5.5" Base w/ K2 EverSeal

QUICK GUIDE

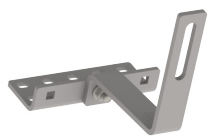


Components



Part Number	Description
4000142-B	USH +2, 5.5" Bse Kit, w/Butyl

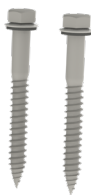
Kit includes:



Universal Standard Hook +2,
5.5" Base"
Material: aluminum
Finish: mill

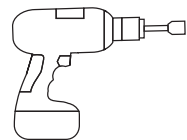
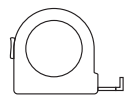


K2 EverSeal



Lag Screws w/ EPDM Washers
Material: stainless steel

Tools overview



Torque wrench
▶ 10-50 ft-lbs



13 mm dep socket
▶ Torque 10 ft-lbs

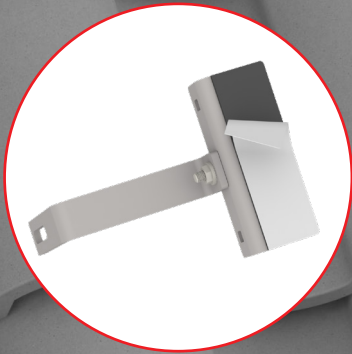
Assembly



1



Remove tile in mounting location. Clean out any debris. Locate rafter for hook installation. Loosely connect the hook base and top using the provided mushroom bolt and hex nut. Using the hook as a guide, mark your drill points over the rafter. Using a 7/32" drill bit, drill pilot holes in marked drill points.



2



Once you've identified the correct install placement of the hook, tighten the nut connecting the hook base and top. Peel off backing on butyl and align hook over pilot holes. With a 13mm socket, install provided lag screws.



3



A. Install Replacement Flashing

Push back center tab to allow tile hook to pass through. Using roofing bars, prop up interlocking tiles to allow installation of replacement tile flashing. Place flashing and lower surrounding tiles to allow flashing to sit properly.

B. Grind/Notch Tile

Mark location of tile hook on the tile. Create a safe tile cutting station with proper safety precautions and equipment. Notch tile with a tile grinder or a tuck point diamond blade. Be sure tile is cut enough so that weather guards sit in their original position. *Some jurisdictions may require water or ventilation to prevent silica dust exposure. Always wear eye protection and safety mask.*

4



Insert the T-Bolt through the slot in the Universal Standard Hook and into the side channel of CrossRail. Turn the T-Bolt clockwise ensuring that the mark at the end of the shaft is vertical, indicating proper alignment. Attach the serrated flange nut and tighten to 26 ft-lbs (35 Nm). Double check that the alignment marking on the end of the T-Bolt shaft is vertical to ensure it is properly engaged. Refer to CrossRail Assembly Instructions for more detail on proper rail installation.

Proper T-Bolt Alignment

Incorrect

Correct

