

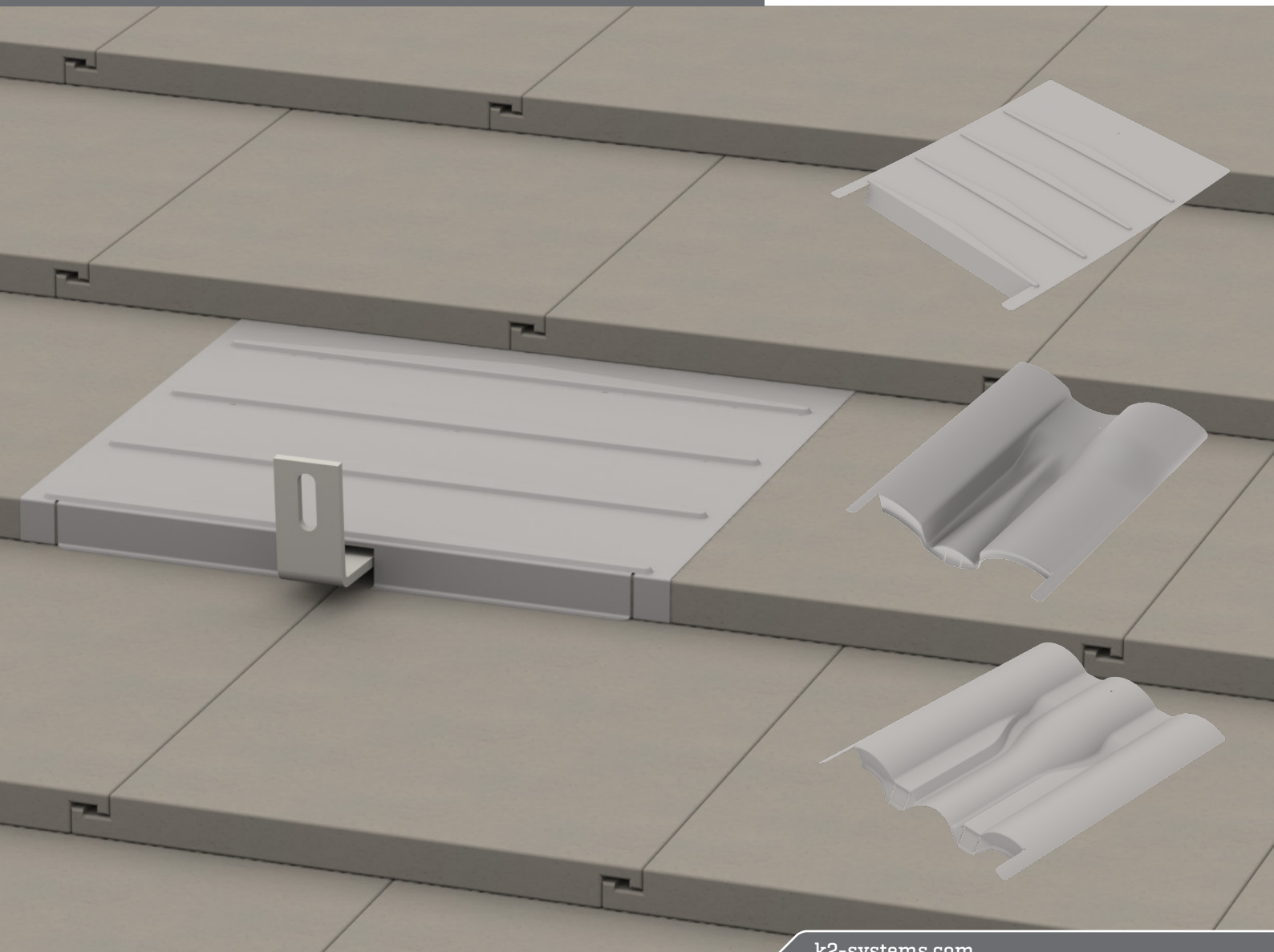
We support PV systems
Formerly Everest Solar Systems 



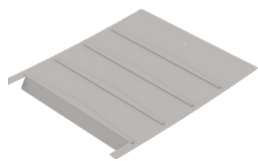
EverFlash Tile Replacement Flashings

Patent Pending

QUICK GUIDE

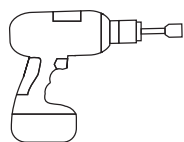
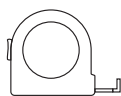


Components



Part Number	Description
4000130	EverFlash Flat Tile - R, Mill
4000131	EverFlash S-Tile - R, Mill
4000132	EverFlash W-Tile - R, Mill

Tools overview



Torque wrench
▶ 10-50 ft-lbs

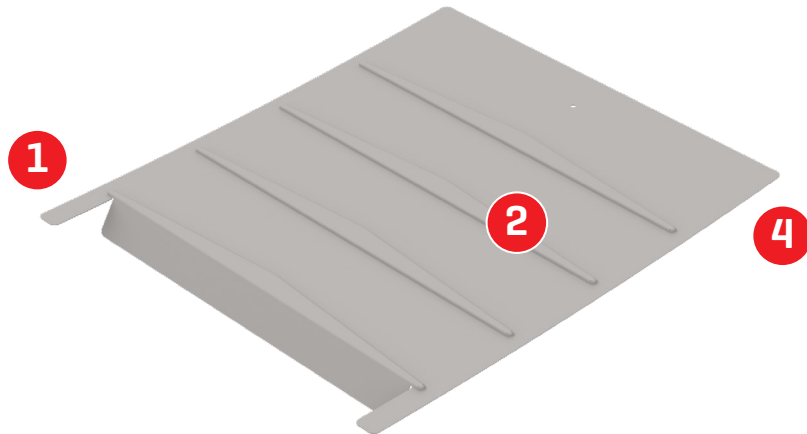


13 mm dep socket
▶ Torque 10 ft-lbs

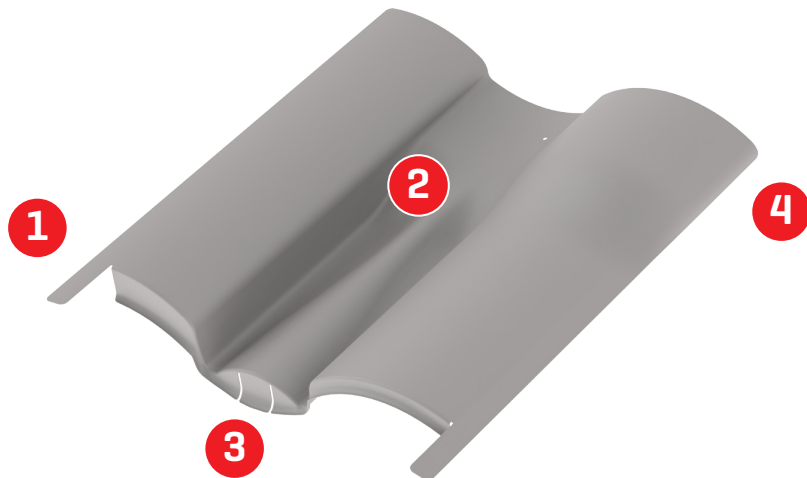
Legend

- | | | | |
|----------|--|----------|---|
| 1 | Securement Tabs
▶ Holds flashing in place | 2 | Built-In Water Diversion
▶ Flashing diverts water from hook |
| 3 | Pre-Cut Hook Tabs
▶ Fold back for hook install | 4 | Slide-In Technology
▶ Fewer tools required |

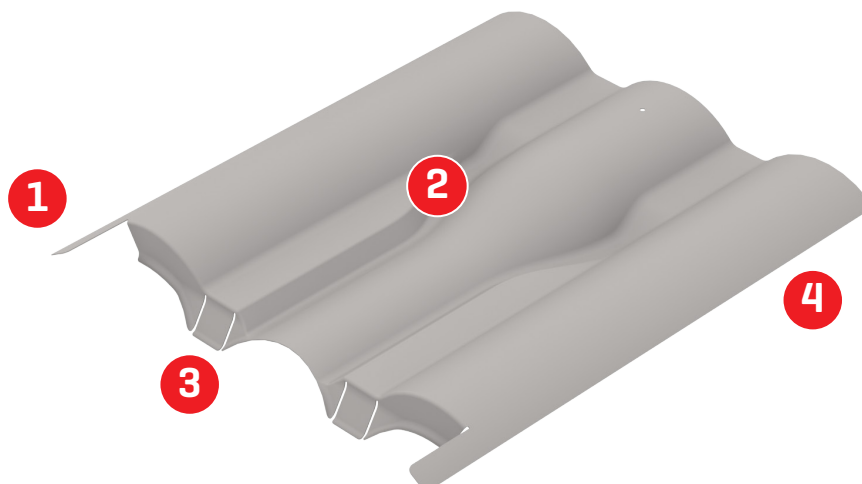
Flat Tile



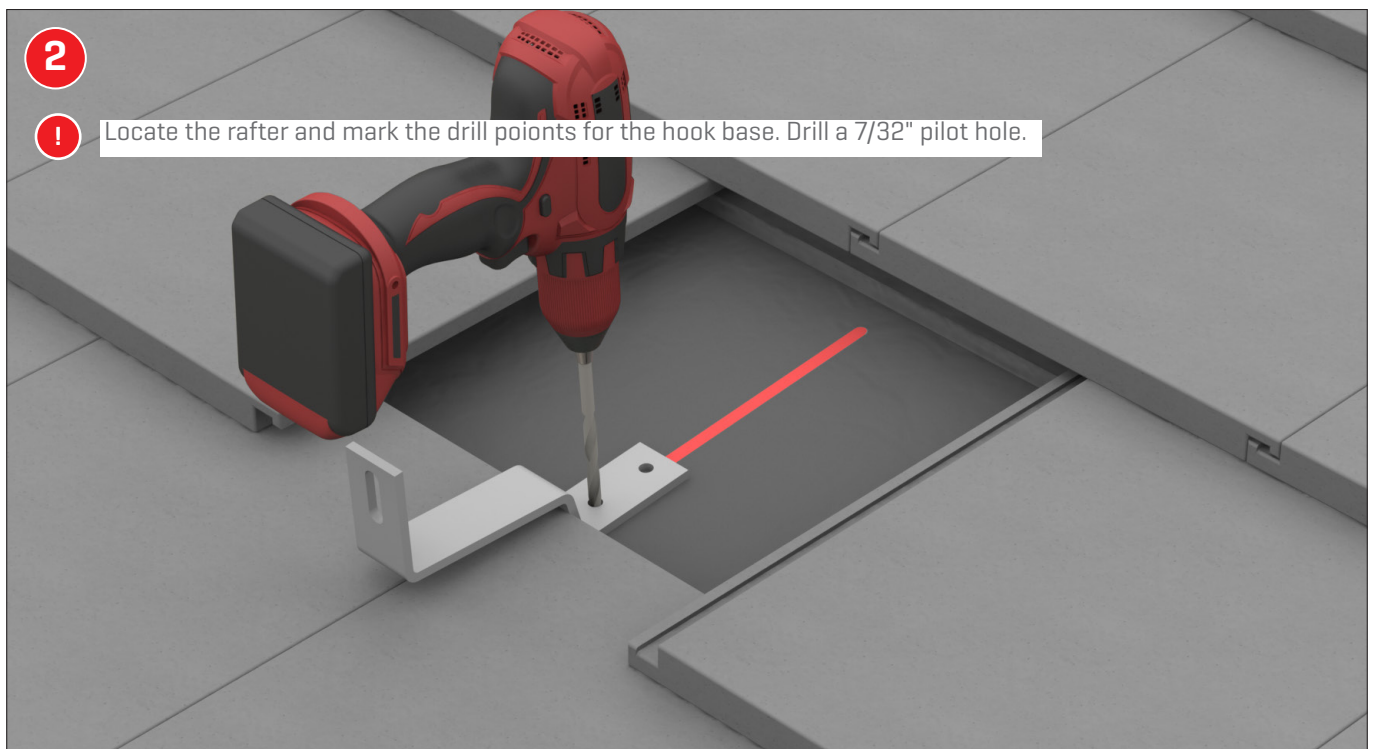
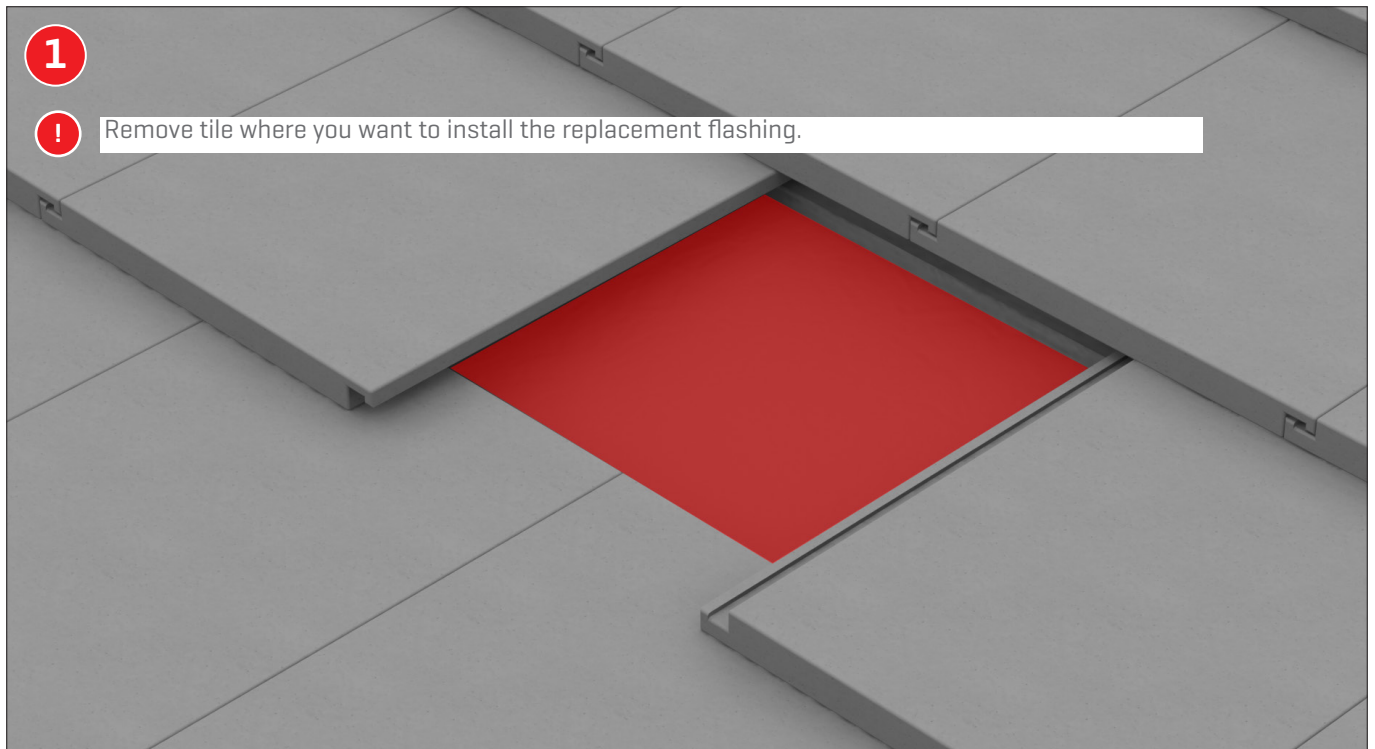
S-Tile



W-Tile



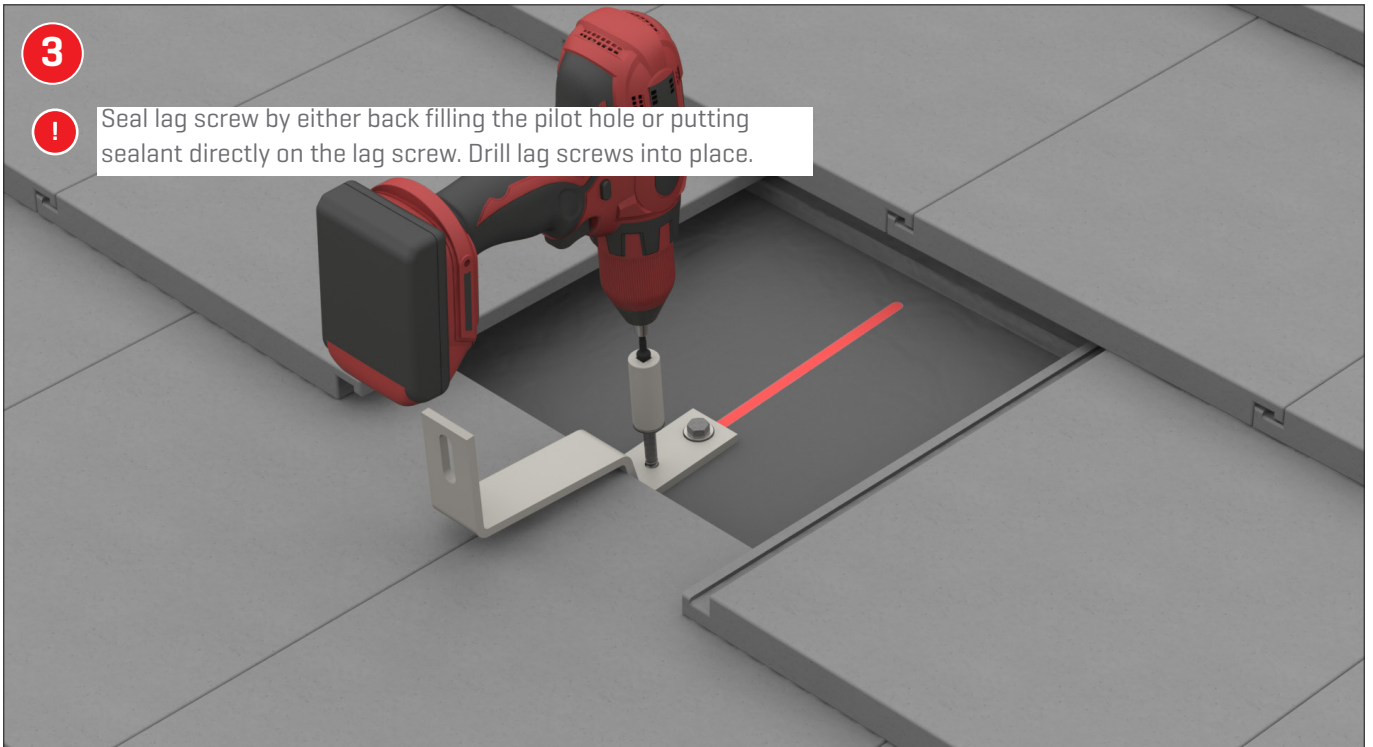
Assembly



3



Seal lag screw by either back filling the pilot hole or putting sealant directly on the lag screw. Drill lag screws into place.

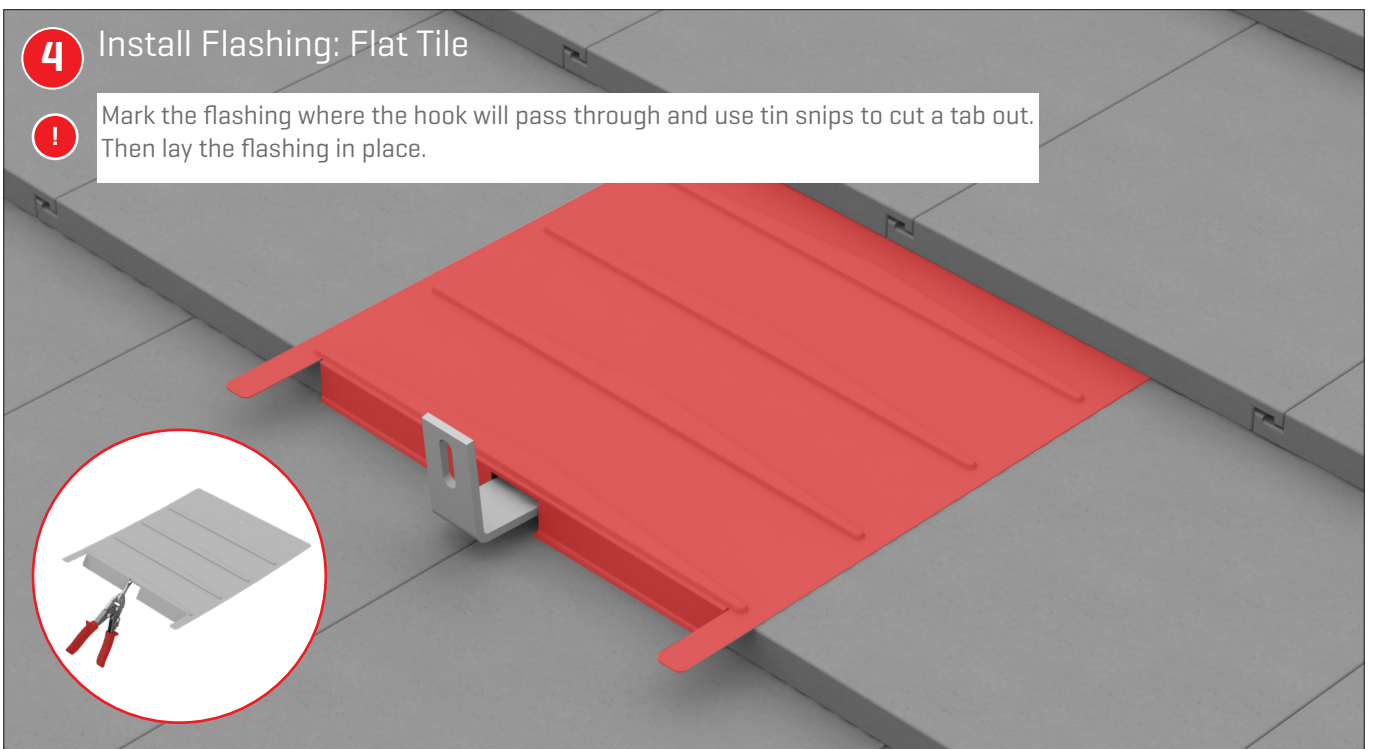


4

Install Flashing: Flat Tile

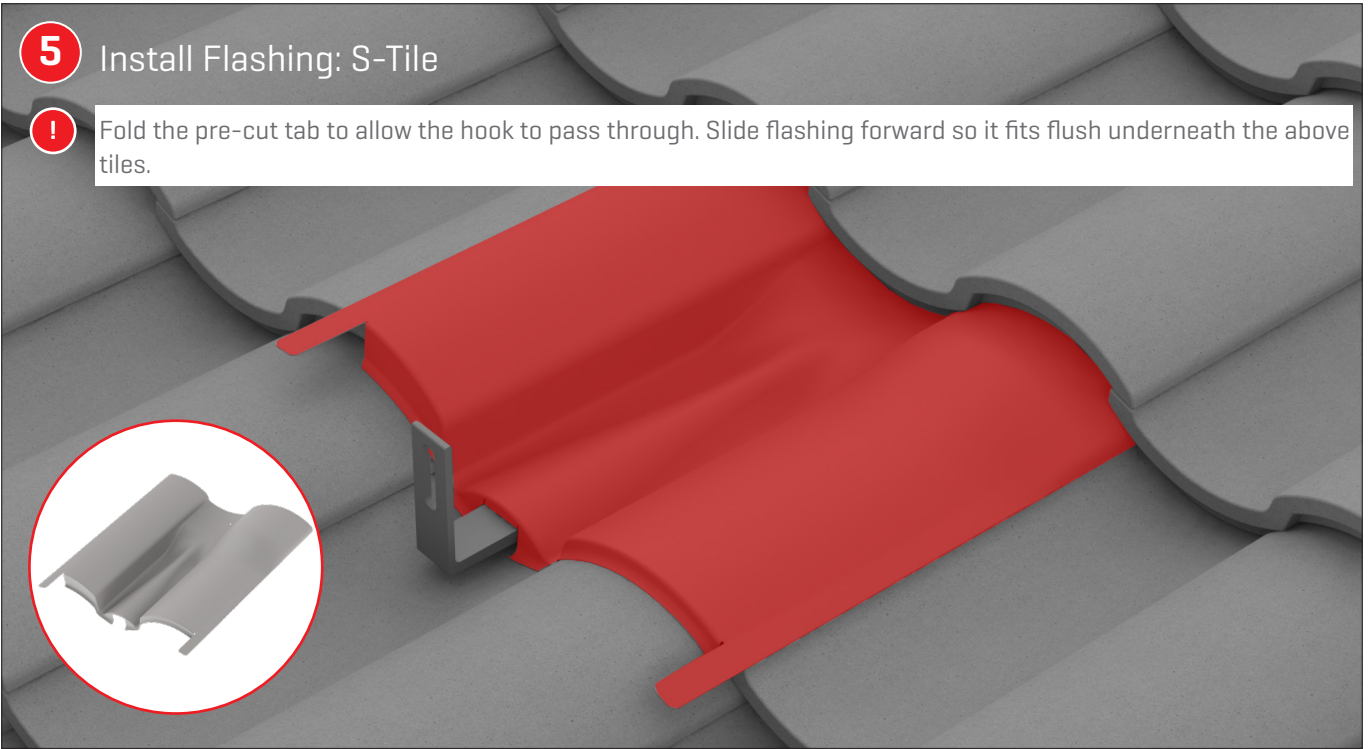


Mark the flashing where the hook will pass through and use tin snips to cut a tab out. Then lay the flashing in place.



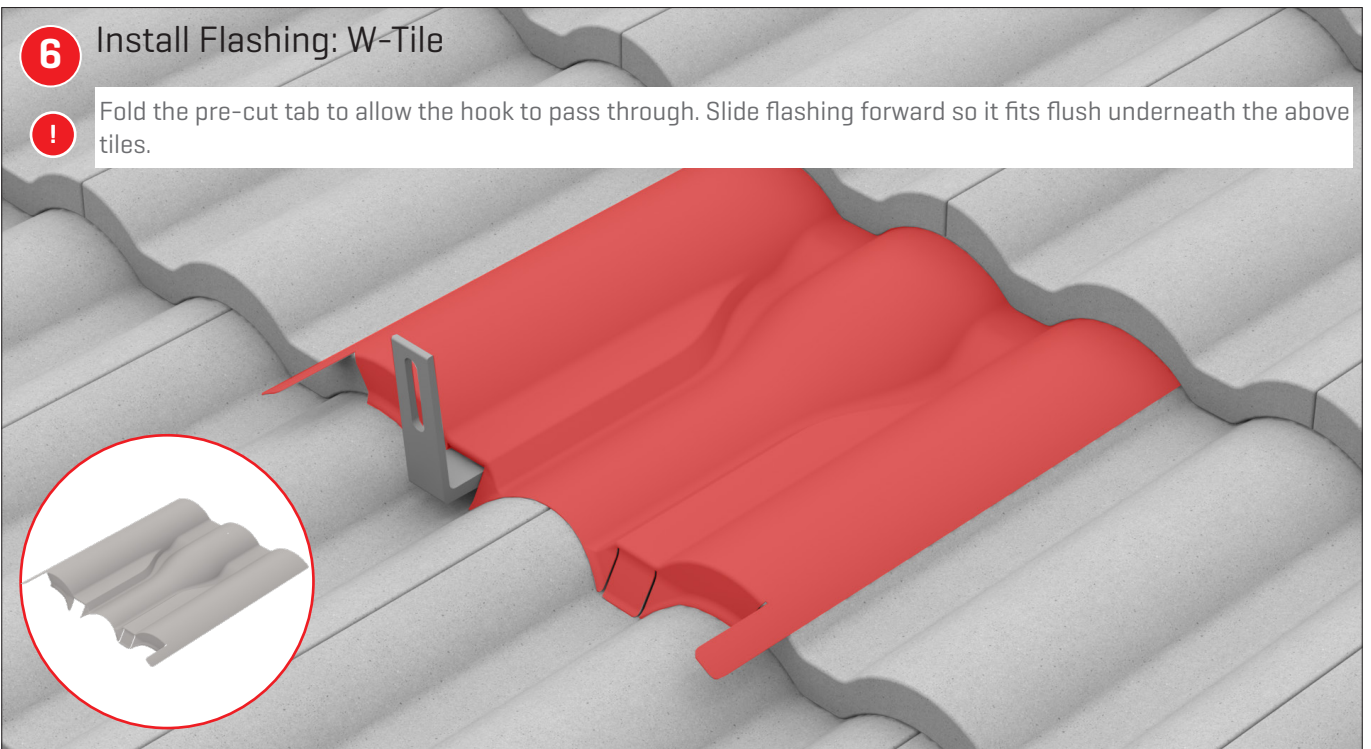
5 Install Flashing: S-Tile

- !** Fold the pre-cut tab to allow the hook to pass through. Slide flashing forward so it fits flush underneath the above tiles.



6 Install Flashing: W-Tile

- !** Fold the pre-cut tab to allow the hook to pass through. Slide flashing forward so it fits flush underneath the above tiles.



6

! Fold the securement tabs over the adjacent tiles.

