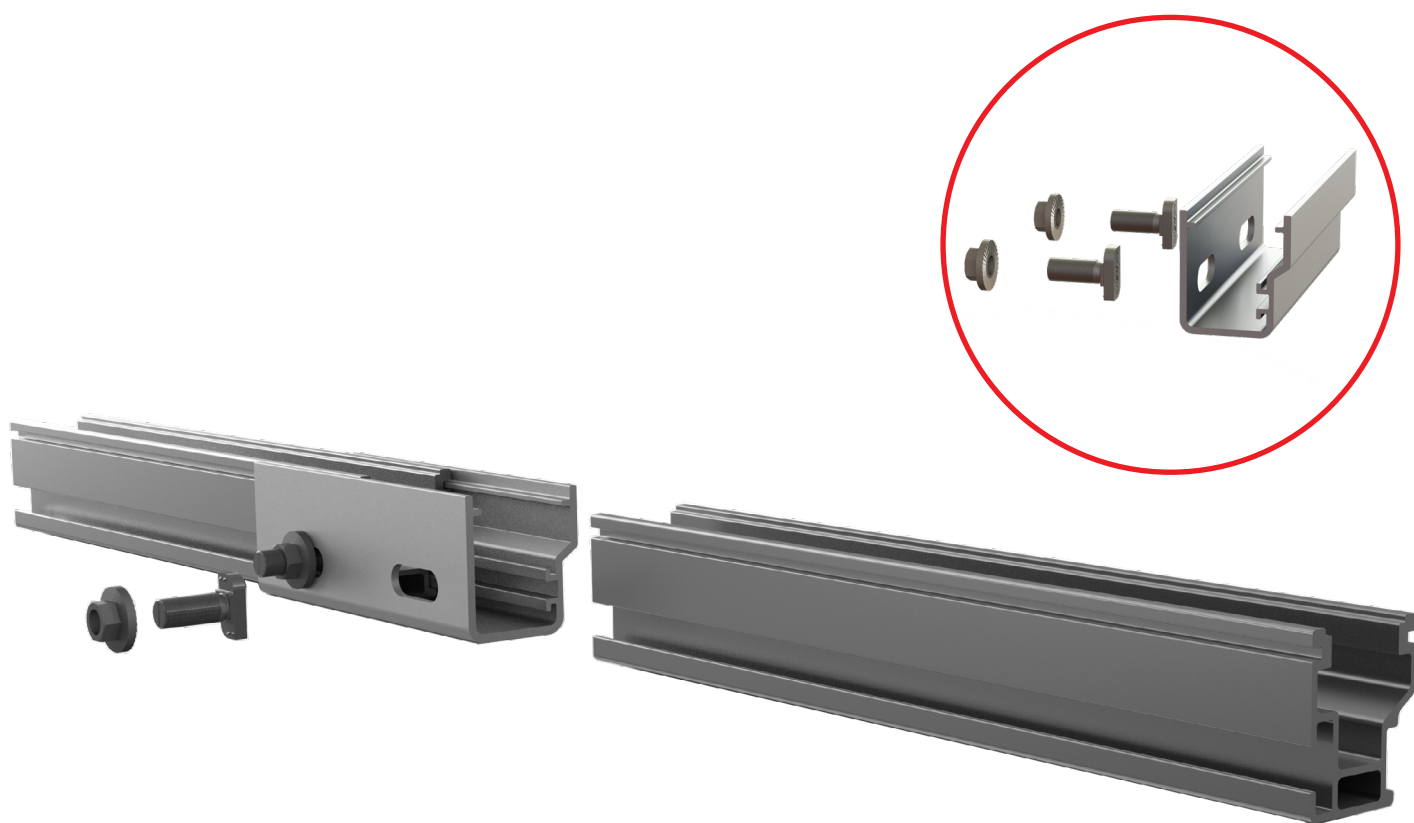


# Structural Rail Connector

## QUICK GUIDE



# Components



Part Number	Description
4000051	Rail Connector CR 44-X, Set, Mill
4000052	Rail Connector CR 44-X, Set, Dark
4000385	RailConn CR 48-X,48-XL Struct Set, Mill
4000386	RailConn CR 48-X,48-XL Struct Set, Dark
4001196	Rail Connector UL 2703 Set, CR80, Mill

## Tools overview



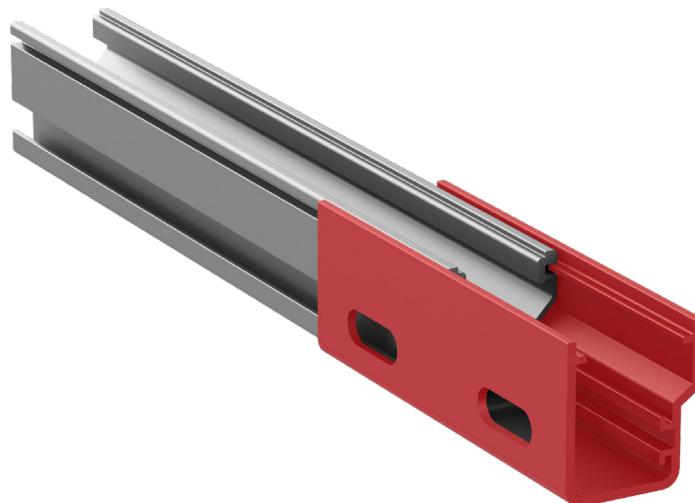
13 mm dep socket  
▶ Torque 25.8 ft-lbs

## Assembly

1

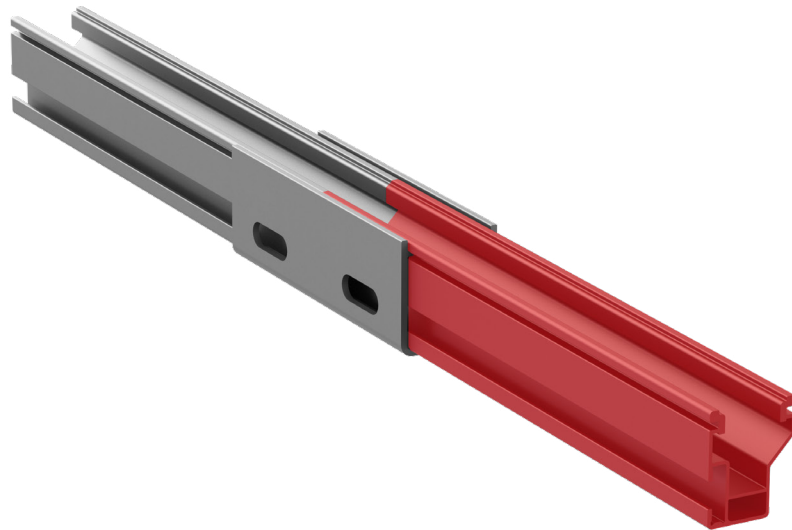


Slide the rail connector onto compatible CrossRail [CrossRail 48-X shown]. The rail connector contains mating features and must be inserted prior to aligning the rails together.



2

! Align the two rail ends next to each other and center the rail connector between the two rails.



3

! Attach the rail connector using two M10 T-Bolts [use bonding T-Bolts with dark rail] and two hex nuts.

Ensure that the slot on the bottom of the T-Bolt is vertical, indicating that the T-Bolt head is properly engaged in the rail channel.

Torque the serrated hex nuts to 25.8 ft-lbs [35 Nm].

Note: Please refer to the system and state-specific engineering letters for allowable spans, limitations and installation notes regarding the capabilities of CrossRail and compatible Rail Connector.

Proper T-Bolt Alignment

Incorrect

Correct

