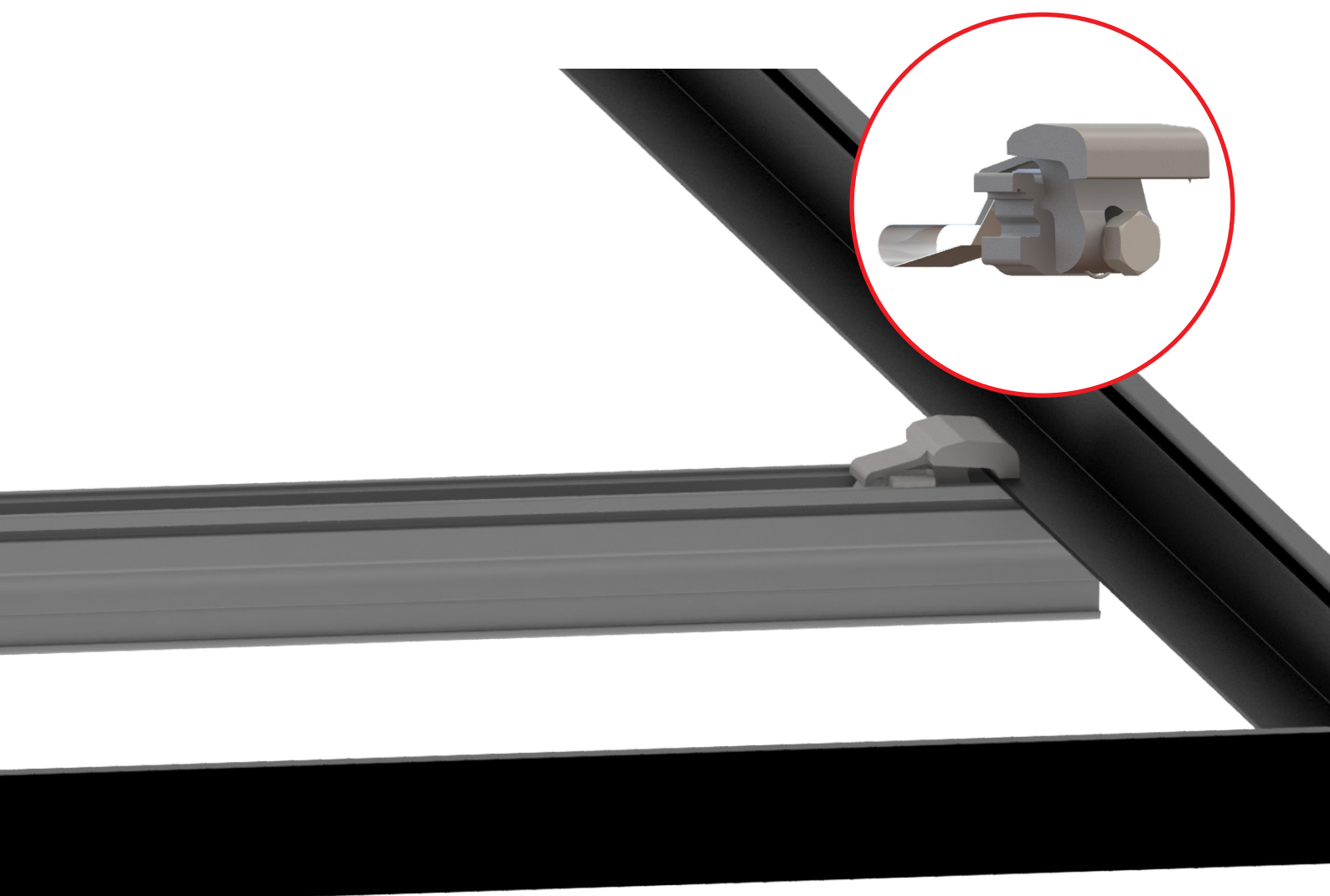
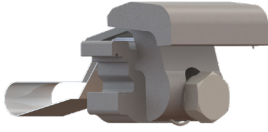


# K2 Yeti Clamp 2.0

## QUICK GUIDE



# Components



Part Number	Description
4000050-B	Yeti Clamp 2.0, Set

## Tools overview



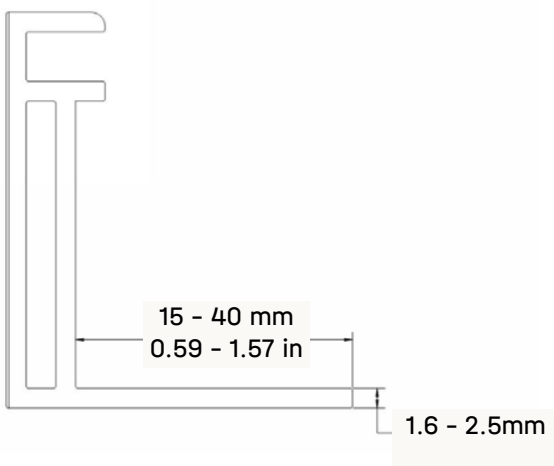
10-50 ft-lb  
[6 - 35 Nm]



13 mm dep socket  
▶ Torque 11.8 ft-lbs

## Important note

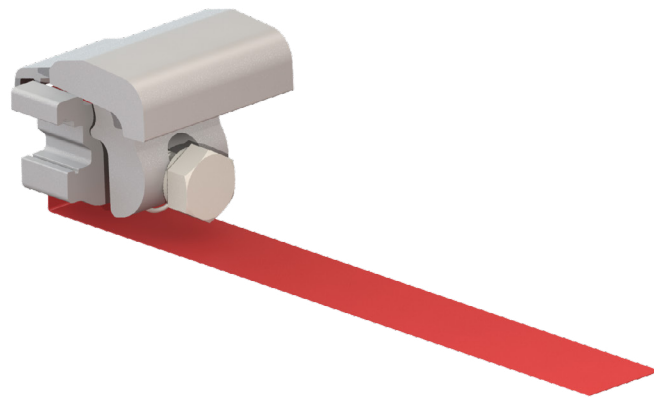
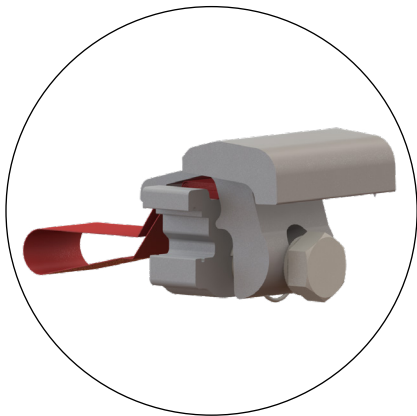
The K2 Yeti Clamp 2.0 must be installed in an array. It cannot be installed on a single module that is not connected to the array by a mid clamp.



Frame Compatibility:  
Flange Thickness = 1.6 - 2.5 mm  
Flange Width = 15 - 40 mm

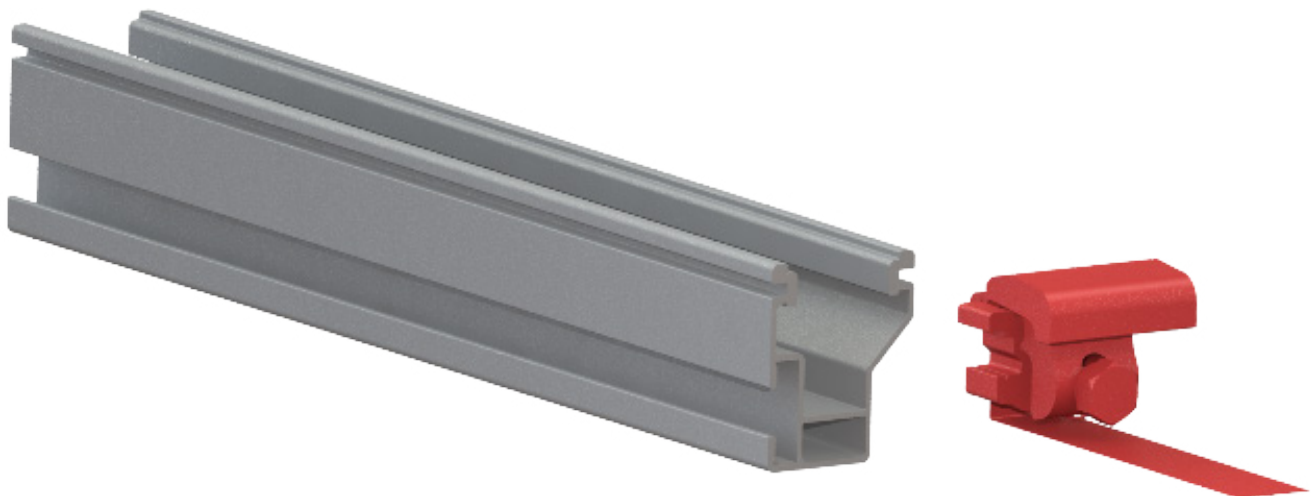
1

- ! The K2 Yeti Clamp 2.0 comes pre-assembled and ready to install. Unfold the Paper Strap located at the bottom of the K2 Yeti Clamp 2.0. The Paper Strap acts as an aid to facilitate installation.



2

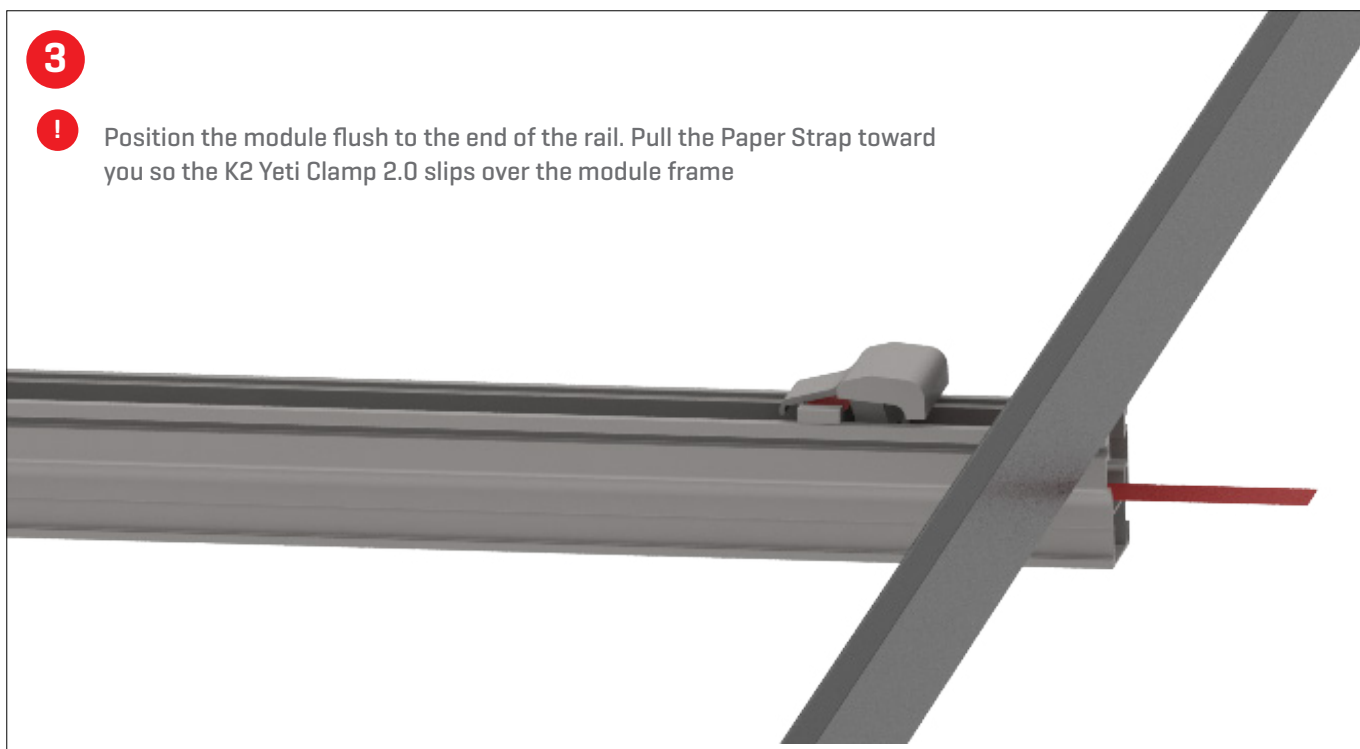
- ! With the Paper Strap unrolled, slide the K2 Yeti Clamp 2.0 into the rail channel with the screw facing out. Slide the K2 Yeti Clamp 2.0 onto the rail leaving enough room to place the module.



3



Position the module flush to the end of the rail. Pull the Paper Strap toward you so the K2 Yeti Clamp 2.0 slips over the module frame

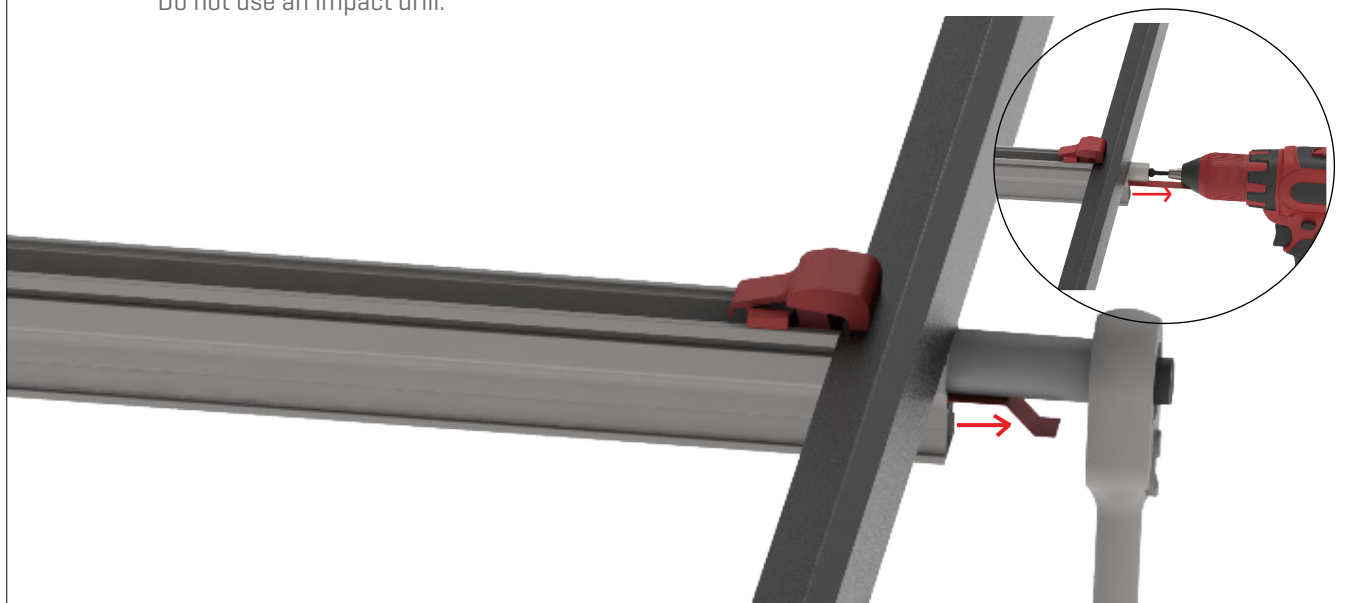


4

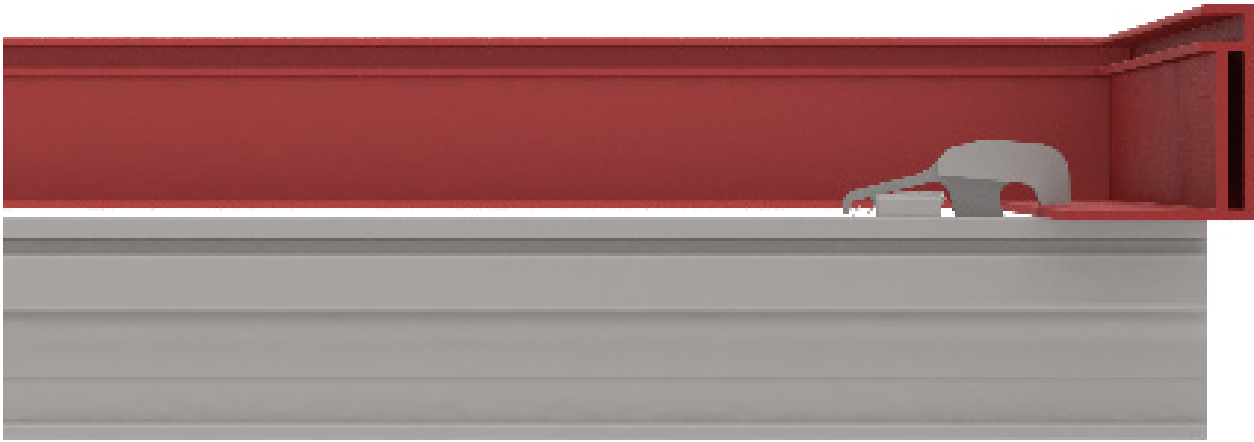


Use a standard ratchet or drill with a 13mm deep box socket and drive in the socket head cap screw and tighten to 12 ft-lbs.

**NOTE:** While tightening the K2 Yeti Clamp 2.0 with the socket pull the Paper Strap towards you. Do not use an impact drill.



5



Be sure that the module is properly fastened with the K2 Yeti Clamp 2.0. The inside edge of the module frame flange must be fully engaged with the K2 Yeti Clamp 2.0 as shown in the image.

6



Install end cap to create a flush, clean look!

