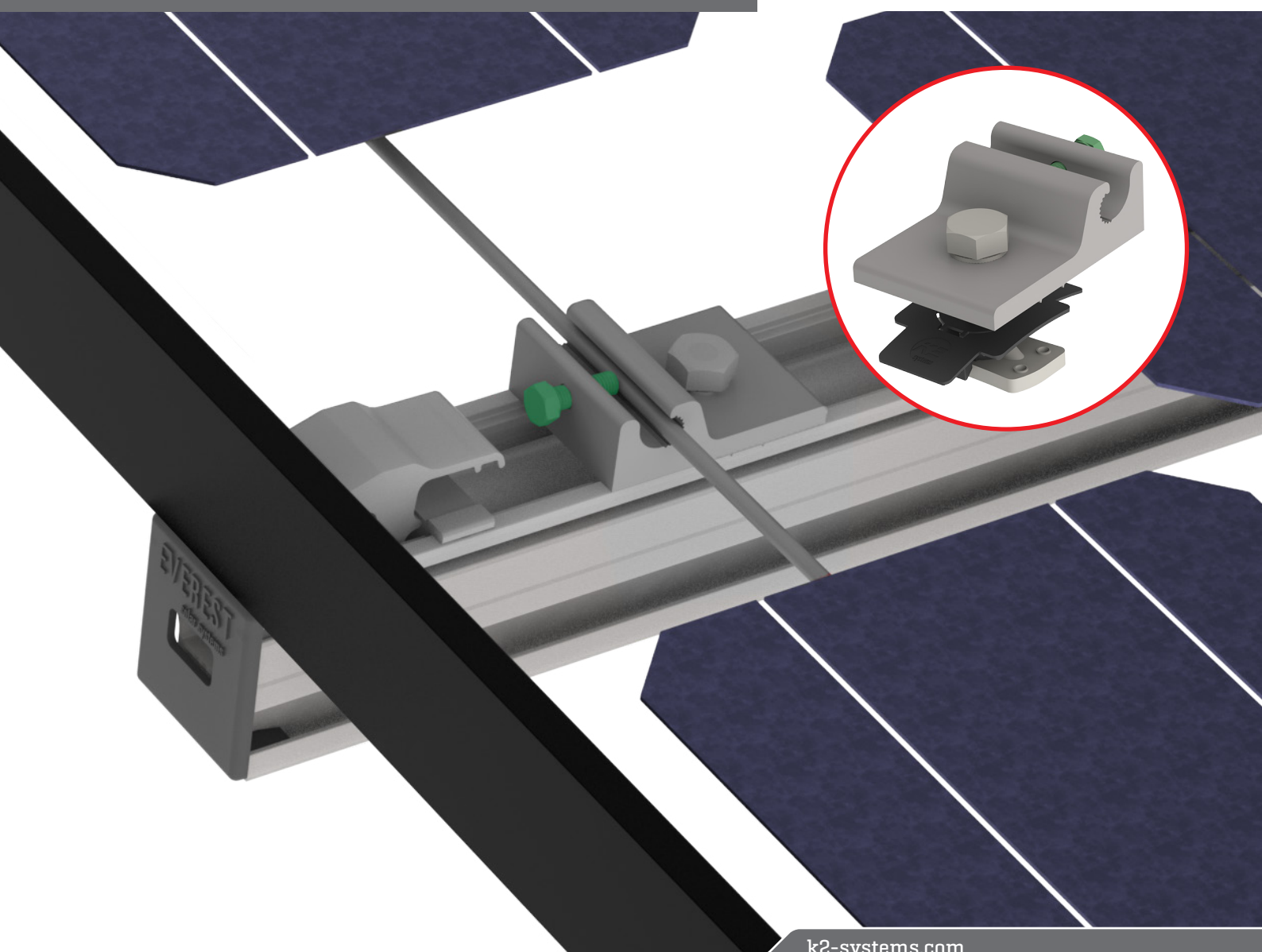
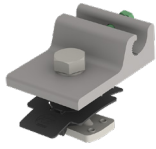


K2 Ground Lug

QUICK GUIDE



Components



| Part Number | Description |
|-------------|-------------------------|
| 4000006-H | K2 Ground Lug, 13mm Hex |

Tools overview



10-50 ft-lb
(6 - 35 Nm)



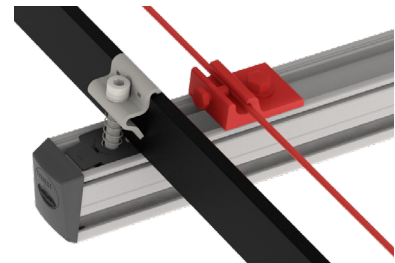
13 mm dep socket
▶ Torque 10 ft-lbs



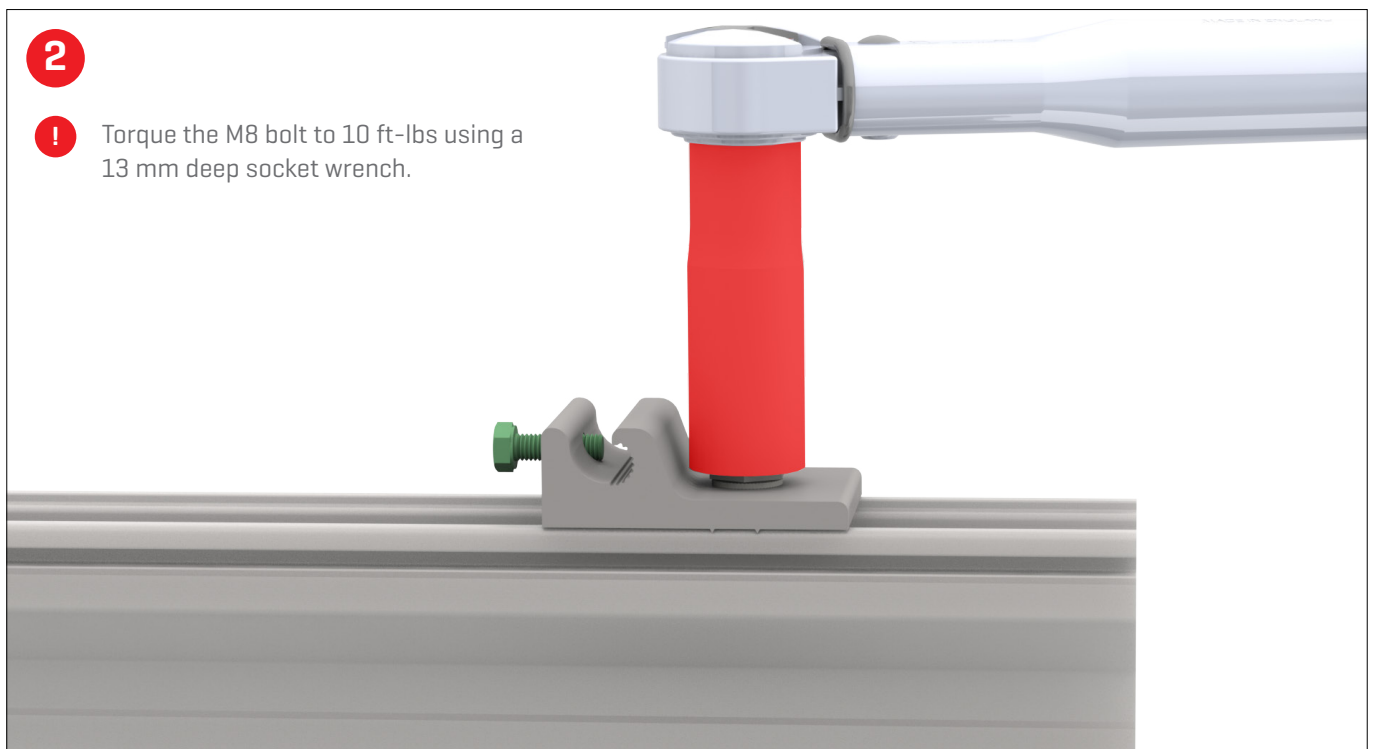
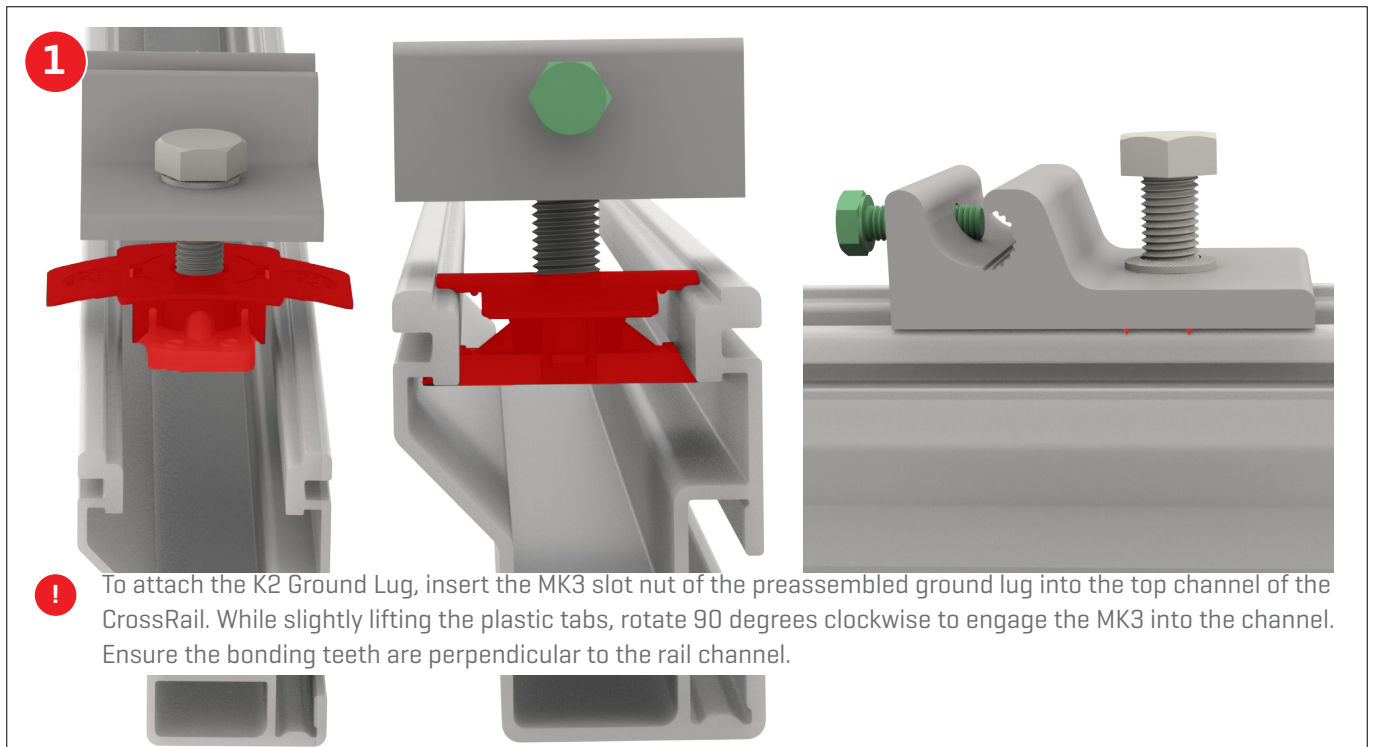
7/16" socket
▶ Torque 35-60 in-lbs

Important note

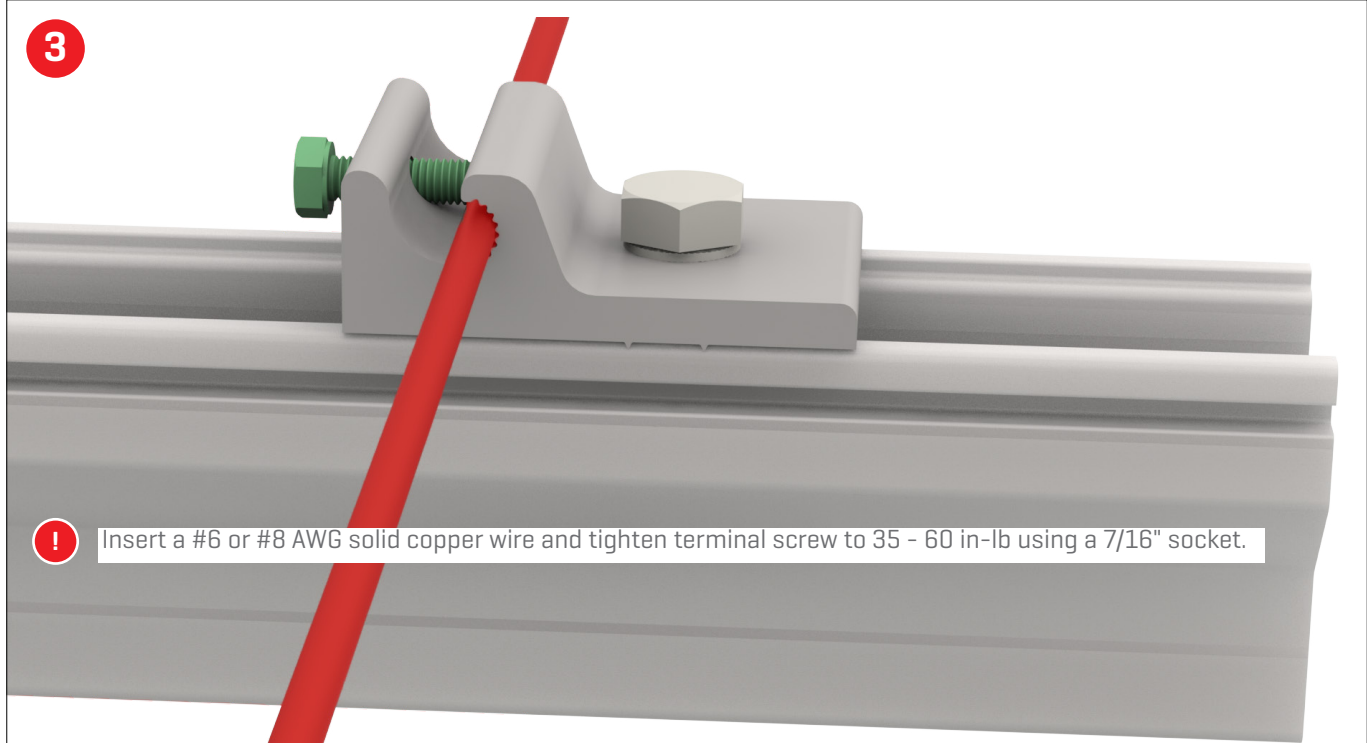
- ! CrossRail components are required to be electrically bonded and grounded via the K2 Ground Lug or Burndy's WEEB Lug 10 and the use of #6 or #8 AWG solid copper wire. A minimum of one lug is required per each independent row of modules. The K2 Ground Lug must be attached to the top channel of CrossRail, as shown.



Assembly



3



!

Insert a #6 or #8 AWG solid copper wire and tighten terminal screw to 35 - 60 in-lb using a 7/16" socket.