



pro**harvest**<sup>™</sup>  
by OutBack Power

## AC Splice Box

PROSPL-60



### What Is It?

Compatible junction box suitable for combining up to three ProHarvest inverters into one home run to an AC load center.

### Ideal For:

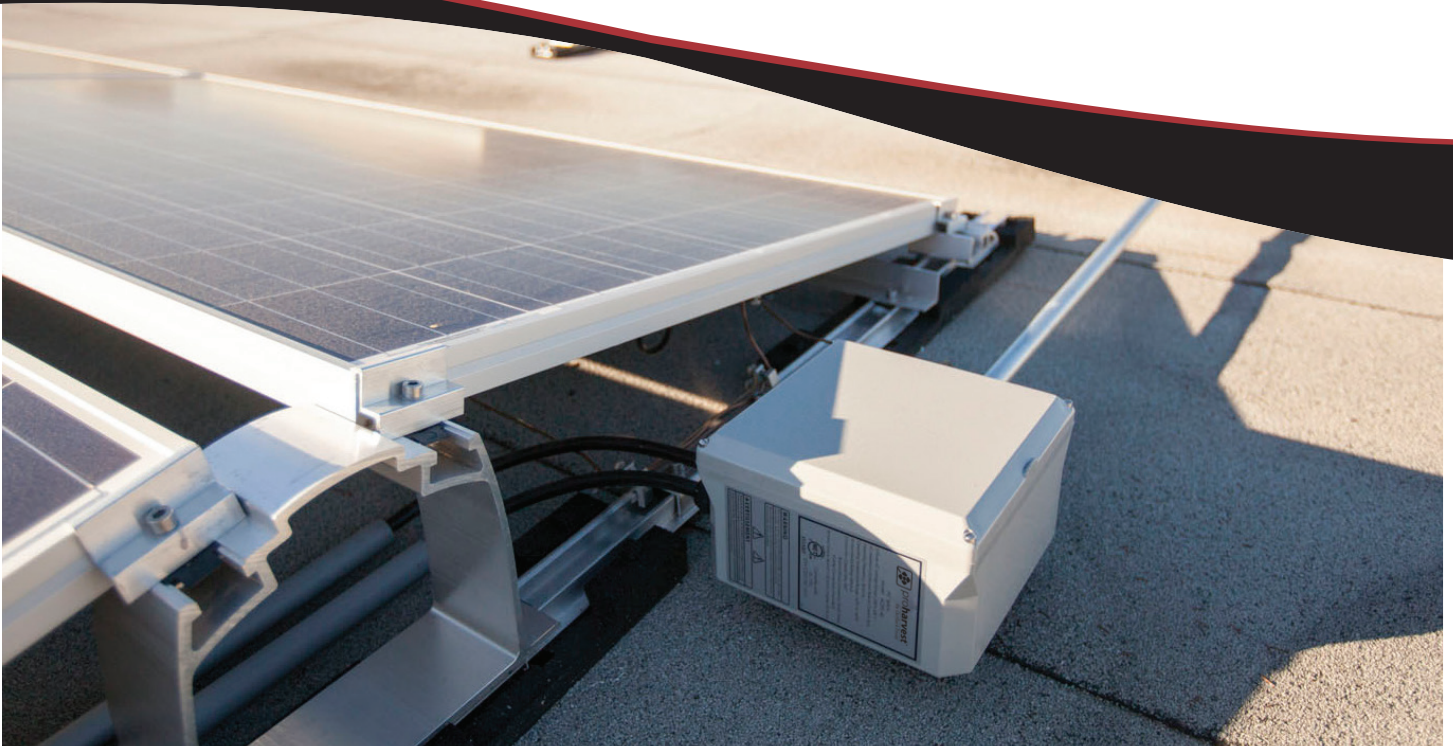
Rooftop solar, carports

### Features

- **Combine AC outputs:** (3) PRO208-5k75, 208VAC inverters—60A OCPD, (3) PRO480-8k, 480VAC inverters—60A OCPD
- Small, inexpensive

### Enclosure Highlights

- Outdoor, weatherproof
- NEMA4, polycarbonate enclosure
- Corrosion resistant
- UV resistant
- Knockouts on bottom of enclosure
- Mountable flat or upright
- Three gland fittings supplied with splice-box



Electrical		PROSPL-60
AC Voltage (Three-Phase)	208 to 600VAC	
AC Frequency	50/60Hz	
Maximum Current Rating (Three ProHarvest Inverters)	60AAC continuous	
Terminal Configuration	Three-phase + neutral	
Conductors (Copper Only, 90°C)	Branch: 8-2/0 AWG Inverter: 12 AWG Equipment Ground Conductor (EGC) per NEC 250.122: 10 AWG	
Terminal Torque	Branch: 120lb-in Inverter: 20lb-in	

Physical		PROSPL-60
Dimensions H x W x D (in/mm)	8.5 x 8.5 x 5.75 / 215 x 215 x 146	
Maximum Allowable Size for Branch Circuit Conduit (in)	2	
Environmental Rating	NEMA4	
Operating Temperature Range	-40 to 65°C	

Ordering Guide		
Item	Part Number	Description
AC Splice Box	PROSPL-60	AC Splice—NEMA4 enclosure. Includes three gland fittings for up to three inverter AC cables. Inverter AC cables must be ordered separately.

