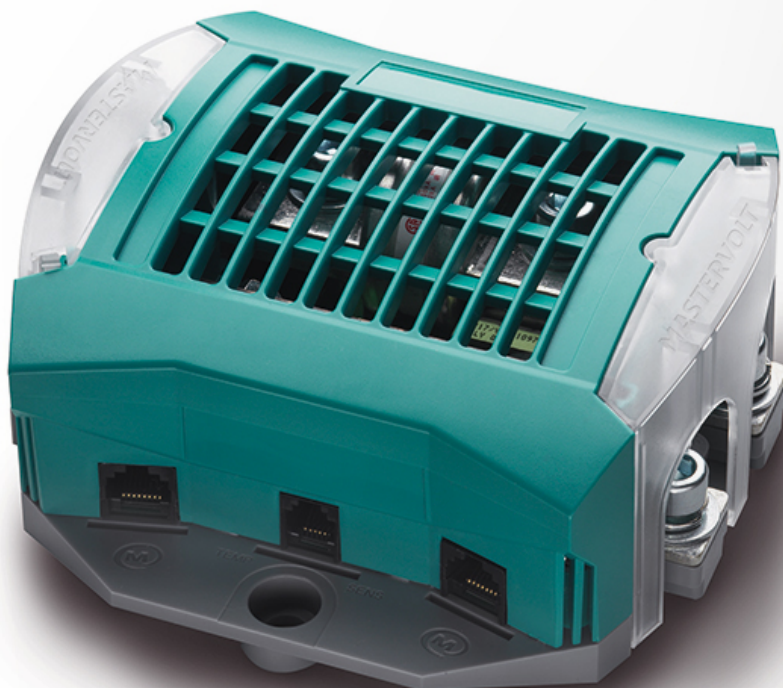


MasterShunt 500



Product code: 77020100

MasterBus integrated battery monitor, with detailed information on the status of your batteries for an optimised charging process, incl. voltage, current, remaining time and consumption capacity in percentage.

With an intelligent connection system, the MasterShunt is easily connected to the DC distribution. The integrated system clock combined with command-based events custom automates the system to your needs.

Example of system automation: The generator should start automatically when the batteries are almost depleted. The MasterShunt also provides a robust built-in main fuse that can safely interrupt short-circuit currents of 20 kA.

Specifications

Specifications battery charger

Battery types

gel, AGM, wet, Lithium Ion, spiral

General specifications

MasterBus powering

yes

Languages on display

ENG, NL, DE, SP, IT, FRA, FIN, SWE, DEN, NOR

Battery voltage

12, 24 or 48 V DC

Dimensions, hxxwxd

150 x 150 x 65 mm

5.9 x 5.9 x 2.6 inch

Weight

1 kg

2.2 lb

Current

300 A cont. / 500 A for 5 minutes

Main fuse

500 A T-fuse (300 A cont. at 40 °C)

System functionality

alarm, timers, auto start/stop for the generator

Programmable alarms

warning low voltage, warning low state of charge, high voltage

Delivered with

MasterShunt, temperature sensor, MasterBus terminator,

MasterBus cable, isolation cover for DC connections

Technical specifications

Temperature range (ambient temp.)

-20 °C to 50 °C

-4 to 122 °F

Protection degree

IP21