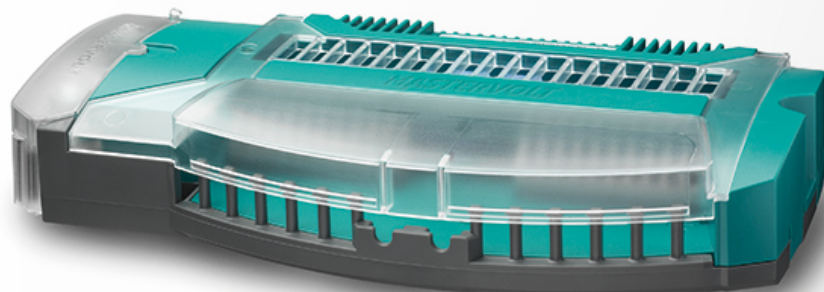


# Digital DC 10x10A



Product code: 77020400

# Digital DC 10x10A

As the pinnacle of system intelligence, the Mastervolt Digital DC 10x10A has ten 10 A outputs for all functions including lighting, pumps, electronics, etc. It comes standard with intelligent alarm functions and luxury options include:

- Follow me home (light stays on for a specific time).
- Delayed dimming of lights (including ten built-in dimmers).
- Alarm signal for overload.
- Every output has a hardware and software fuse.
- Reset the fuses via the MasterBus network.
- Possibility of higher currents (up to 100 A) with parallel switching of multiple outputs.
- Logical blocks.

# Specifications

## General specifications

Max. input current	100 A
MasterBus powering	yes
Languages on display	ENG, NL, DE, SP, IT, FRA, FIN, SWE, DEN, NOR
Dimensions, hwxwd	40 x 229 x 110 mm 1.6 x 9.0 x 4.3 inch
Weight	0.75 kg 1.7 lb

## Technical specifications

Input supply voltage	8-30 V
Power consumption (DC side)	< 2 mA at 12/24 V
Protection degree	IP21
Max. software fuse current	per channel: 10 A
Hardware fuse current	per channel: 15 A
Connections input	max. 95 mm <sup>2</sup> or directly connected to MasterShunt or DC Distribution
Connections output	cable max. 4 mm <sup>2</sup>