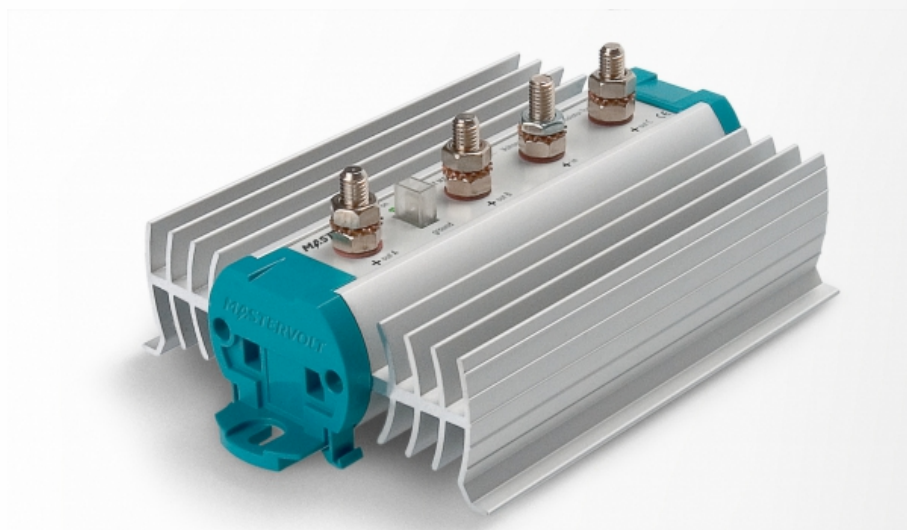


Battery Mate 1602 IG



Product code: 83116025

While battery isolators are conventional diode splitters, the Battery Mate's technology is electronic and includes mosfets (transistors). Its components compensate for the voltage drop and ensure that charging continues at the right voltage level, even with several battery banks.

The Battery Mate is compatible with any type of alternator/battery charger, in both existing and new systems. As the voltage loss between the alternator and battery is negligible, the Battery Mate performs far better than conventional battery isolators. This ensures fast and complete charging of your batteries without having to make additional adjustments to the alternator.

Charging two or three batteries at high capacity

The Battery Mate is most suitable for charging multiple batteries, possibly with various brands of alternators, even if their charge voltage cannot be adjusted. It can charge two or three batteries with a very high yield and without voltage loss.

Models 1602/1603 are suitable for alternators with a maximum charge current of 160 amp, the Battery Mate 2503 is ideal for alternators with a maximum charge current of 250 amp.

Clear monitoring

Safety guaranteed: The Battery Mate LED display indicates whether the power input is active.

Specifications

General specifications

| | |
|---------------------------|----------------------|
| Number of battery outlets | 2 |
| Dimensions, hxwx d | 207 x 140 x 80 mm |
| | 8.1 x 5.5 x 3.1 inch |
| Weight | 1 kg |
| | 2.2 lb |

Technical specifications

| | |
|-----------------------------|-------|
| Max. output battery charger | 120 A |
| Max. output alternator | 160 A |