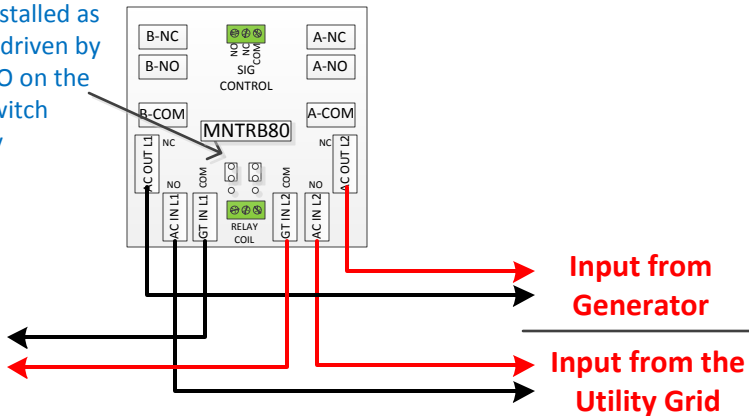


Auto transfer for dual inputs

TRB80-GENERATOR-
SMA-REVC-5/6/16

Jumpers need to be installed as shown. The relays are driven by the grid AC power (NO on the TRB80) so they switch automatically

Output to the AC
Input terminals on
the E-Panel



As shown utility in could be a second generator, The terminals (NO) that Utility in are connected to trigger the relay so these are the priority terminals.

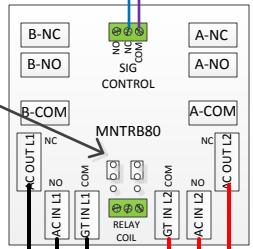
SMA SUNNY ISLAND ONLY!!!!!!!!!!!!!!!!!!!!

TRB80-GENERATOR-
SMA-REVC-5/6/16



Wiring to be done inside
the Sunny Island. Red
jumper needs to be
installed as well

Jumpers need to be installed as
shown. The relays are driven by
the grid AC power so they
switch automatically



Output to the AC
Input terminals on
the E-Panel

Input from
Generator

Input from the
Utility Grid

