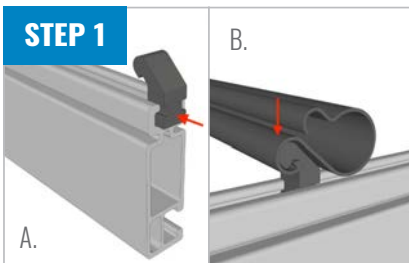
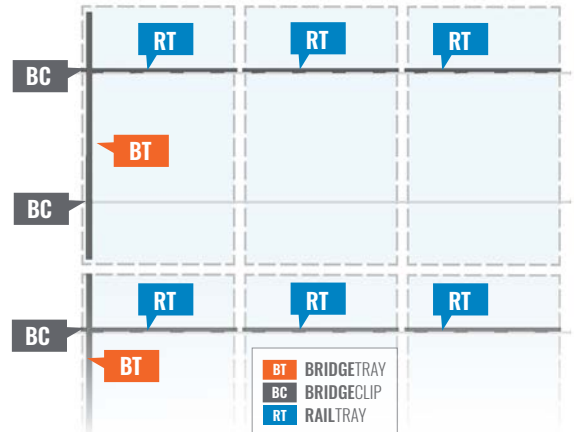


INSTALLATION GUIDE

PRE-INSTALL

BT BRIDGETRAY supports north-south wire runs. It attaches to the top slot of **SOLARMOUNT Rail** with **BRIDGECLIPS**, lays underneath the module, and extends the length of a standard 60 cell module in portrait orientation

RT RAILTRAY is the width of a standard 60 cell module in portrait orientation and supports wires running along the Rail.

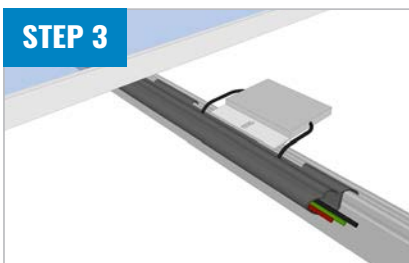


STEP 1: INSTALL BRIDGETRAY

- Insert a **BRIDGECLIP** into the end of each of the two Rails that will support the module at the start of each north-south wire run. Slide the **BRIDGECLIPS** to the location of the wire run.
- Center **BRIDGETRAY** over the Rails and push it down onto the **BRIDGECLIPS** until it clicks into place. Repeat Step 1 for each row of modules.

STEP 2: INSTALL RAILTRAY

At the location of each module, press **RAILTRAY** into the top rail mounting channel.



STEP 3: INSERT WIRES

Mount MLPEs to Rail thru the open slots in the **RAILTRAY**; push wires and connectors into the TRAY.

TIPS:

Hold the wire so that it forms a small loop, then press the loop into the TRAY.

For landscape arrays, cut **BRIDGETRAY** to fit between the inner edges of the module frame width and follow Step 1 above. Plan for 1.5 **RAILTRAYS** per module.

EVERYTHING YOU NEED FOR A QUICK, PROFESSIONAL INSTALLATION

FOR QUESTIONS OR CUSTOMER SERVICE VISIT UNIRAC.COM OR CALL (505) 248-2702