

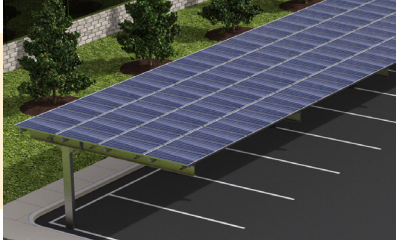
# QUALITY MOUNTING HARDWARE SOLUTIONS FOR THE PV SOLAR INDUSTRY



# PRODUCTS FOR PV SOLAR MOUNTING APPLICATIONS

## CARPORT STRUCTURES

*Residential & Commercial*



### Solar Carport Canopy Shade Structure

- High strength, galvanized steel construction
- Designs for single or double rows of cars
- 0, 5, and 10-degree tilt options – positive or negative
- Shared module clamps – up to 50% fewer clamps
- Modular design – common components
- Purlin extensions adjust to any width module

## ROOF MOUNT SYSTEMS

*Commercial*



### POWER MAX™

- Non-penetrating, ballasted commercial flat roof mounting system
- Three choices: 5° or 10° tilt, dual tilt (East/West), and flush mount
- Stackable, lightweight base – easier transport
- Wind tunnel tested and qualified – reduces ballast
- Integrated grounding, code compliant
- Preassembled clamp – no loose hardware
- Unique, adjustable inter-row spacing for maximum density and layout flexibility



*Commercial*



### Ballasted POWER RAIL™ Mounts (BPRM)

- Non-penetrating, flush mount commercial flat roof system
- Power Rail™ top-clamping system with \*Lock-in-Place RAD™ hardware
- High density, high energy output per square foot
- EPDM rubber (included) protects roof surfaces
- Wind tunnel tested – low ballast weight
- Follows drainage contours of roof
- UL 2703 compliant with integrated grounding



*Residential & Commercial*



### POWER RAIL™ Mounting System (PRM)

- P4, P6, P8, P14, XD, UD, LD and MD rail options for optimal span-to-cost ratio
- High strength, top-clamping mounting system with \*Lock-in-Place RAD™ hardware
- Parallel to roof, tilted, or open structure applications
- Single tool assembly
- Attachment options for any style roof application or structure
- UL 2703 compliant with integrated grounding



*Residential*



### POWER DISK™ Rail-less Mounting System

- Can be mounted anywhere on the roof or attached directly to rafters
- Works with 60- and 72-cell modules
- Eliminates long rails – easier transport
- Landscape or portrait mounting
- Rotating assembly provides vertical adjustment
- Sealing butyl mastic (included) or optional flashing



## GROUND MOUNT SYSTEMS

*Utility-Scale & Commercial*



*Residential & Commercial*



### **POWER PEAK™ GS & AL**

- Designed for commercial and large-scale applications featuring fewer components
- Installs over pile driven standard I-Beams
- Tables optimized to specific site requirements
- Field adjustable – faster installation
- Features \*Lock-in-Place RAD™ hardware
- UL 2703 compliant with integrated grounding



### **Multi-Pole Mounts (MPM-G2)**

- Designed to mount on 3" or 4" Schedule 40 or 80 rigid steel pipe (installer supplied)
- Fewer ground penetrations than traditional ground mount systems, saving labor and materials
- Optional ground clearance – ideal for shade structures or car ports
- Power Rail™ top-clamping system with \*Lock-in-Place RAD™ hardware
- Seasonal elevation adjustments – positive locking brackets

\*Lock-in-Place RAD™ Bolts are patented.

## POLE MOUNT SYSTEMS

*Residential & Commercial*



*Residential & Commercial*



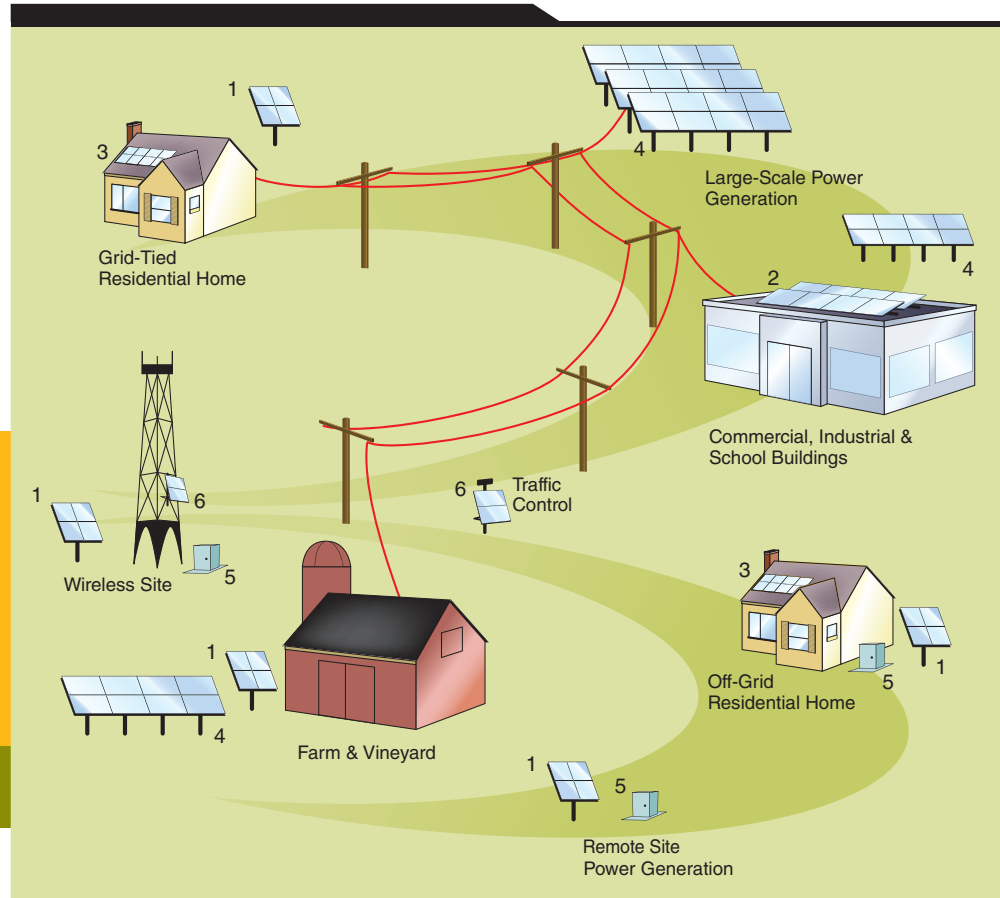
### **Top-of-Pole Mounts (TPM) – Universal (UTPM)**

- Heavy gauge steel and aluminum construction
- Securely mount 1 to 18 modules on a single pole
- Standard module-specific design reduces parts and assembly time
- Universal Top-of-Pole Mount design adapts to most 60-cell modules
- Seasonal elevation adjustments from 15° to 65°
- Mounts on standard Schedule 40 or 80 rigid steel pipe

### **Side-of-Pole Mounts (SPM)**

- Available in painted steel or mill-finish aluminum construction
- Mounting options include band clamps, U-bolts, or through bolts
- Adjustable tilt angle
- Heavy duty stainless steel mounting hardware
- Tower mounting options available

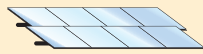
# Mounting Hardware Solutions for Any Solar Application



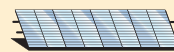
## Solutions Key



1. Top-of-Pole Mounts



2. Ballasted Roof Mounts  
- POWER MAX™  
- Ballasted Power Rail



3. Roof Mounts  
- POWER RAIL™  
- POWER DISK™



4. Ground Mounts  
- POWER PEAK™  
- Multi-Pole Mounts



5. Power Box™ Enclosures



6. Side-of-Pole Mounts



Global Headquarters  
660 Beta Drive  
Mayfield Village, OH 44143

Telephone: 440.461.5200  
Fax: 440.442.8816  
Website: [preformed.com](http://preformed.com)  
Email: [info@plpsolar.com](mailto:info@plpsolar.com)

© 2020 Preformed Line Products Company  
Printed in the U.S.A.  
SL-BR-1003-16  
01.20.IH