



## RSD quick installation manual

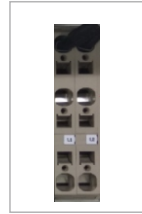


Please see detail in the installation and operation manual

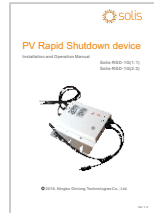
### 1. Packaging



1



2

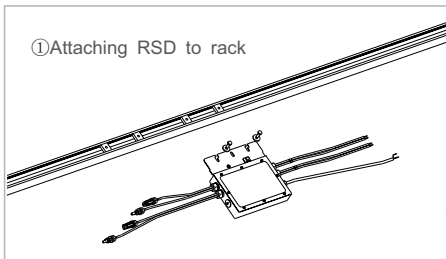


3

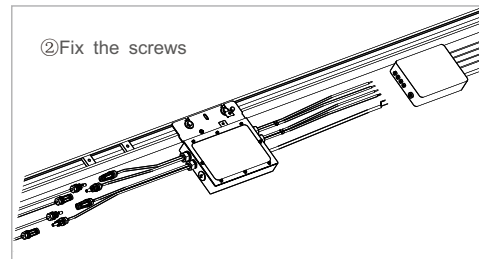
Part #	Description	Number
1	Rapid Shutdown Device	1
2	AC Terminal Assembly	2
3	Manual	1

### 2. Installation

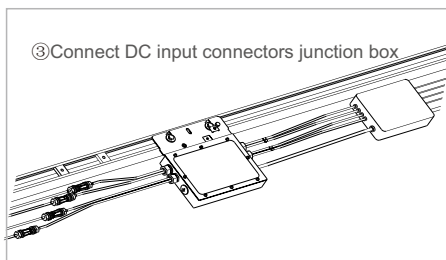
RSD is designed to mount on the rack under PV modules, please follow below steps:



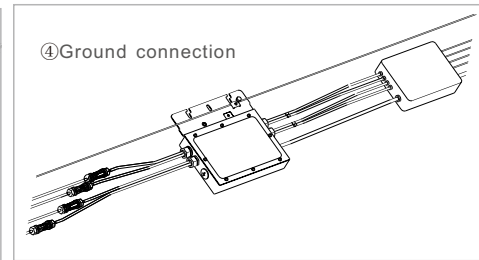
① Attaching RSD to rack



② Fix the screws



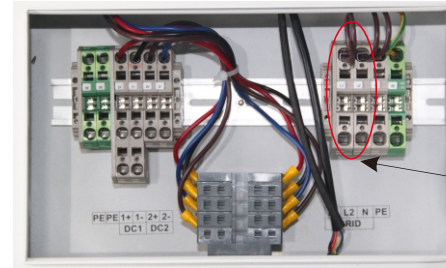
③ Connect DC input connectors junction box



④ Ground connection

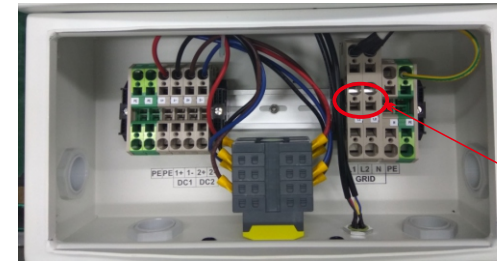
### 3. Connect grid power of RSD

Some of Solis 2G series inverter is not designed to match RSD, so there are two pin terminal in RSD accessory, installer may need to replace the L1 and L2 terminal of the inverter to the 2 pin connector.



Raise the root side of the L1 and L2 terminal

Raise the root side of the L1 and L2 terminal to replace the L1 and L2 terminal



RSD grid connection

### 4. Specification

DC	Solis-RSD1L-1G	Solis-RSD2L-1G
Maximum Input and Output Voltage	600VDC	
DC Input Voltage Range	30-600VDC	
Maximum Number of PV Source Circuits	1 or 2 input / 1 output	2 or 3 input / 2 output
Maximum Input / Output Current	20A	20A+10A
Maximum Short Circuit Current	31.2A	
DC Input / Output Cable Whips	PV Wire with MC4 Locking Connectors	
DC Input / Output Wire Size	AWG #12 to #6	
Ground Wire Size	AWG #10 to #6	
<b>AC</b>		
Rated AC Input Voltage	208/240VAC	
Rated AC Input Current	0.1A	
Rated Frequency	50/60Hz	
AC Control Wire Size	AWG #18 to #10	
Maximum AC Fuse Rating	2A	
<b>GENERAL</b>		
Ambient Temperature Range	-25 to +65°C (-13 to 158°F)	
Enclosure Type	NEMA 4X	