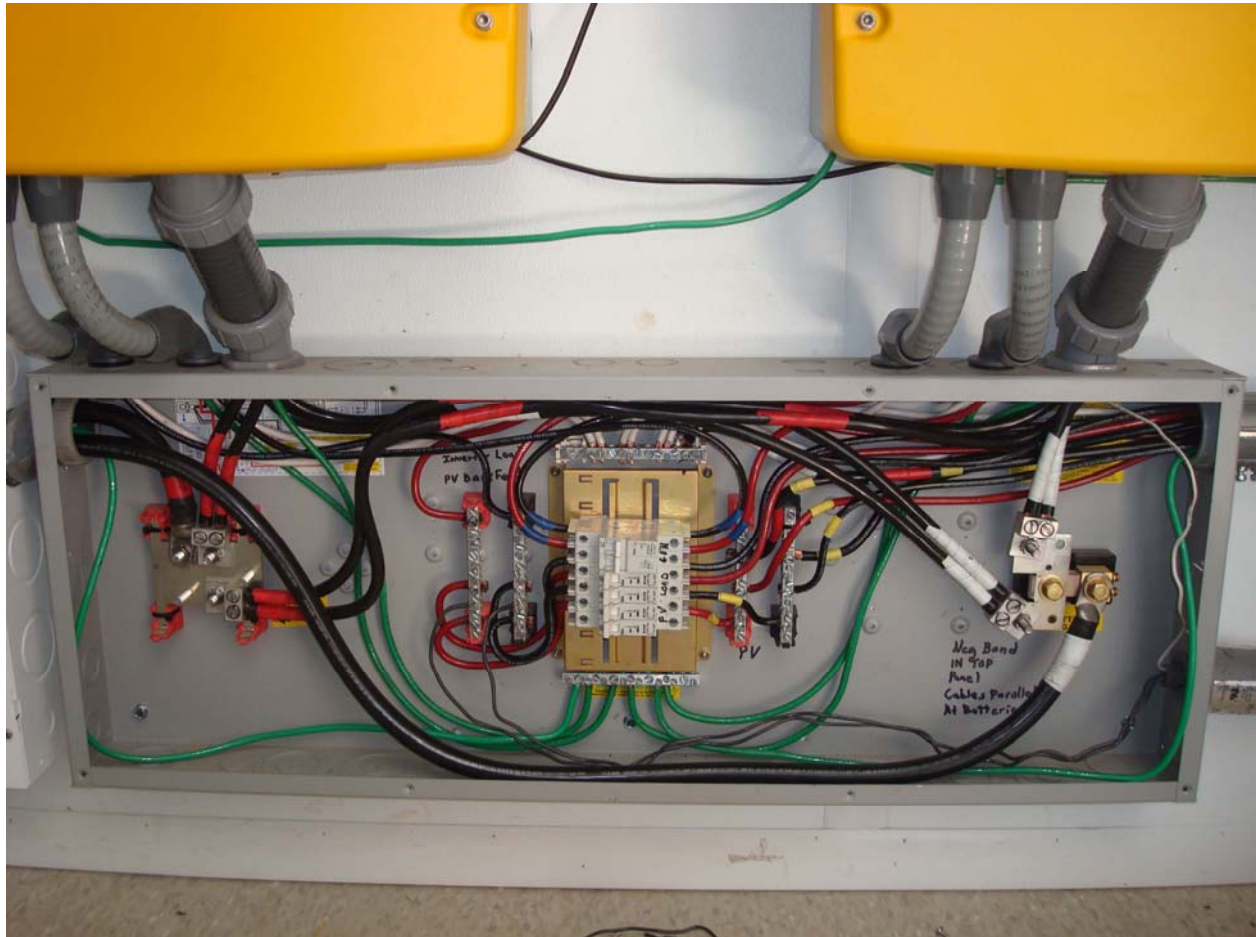


Midnite Nottagutter preliminary information sheet



The Nottagutter is a generic breaker box capable of supporting numerous different applications. The primary feature associated with the Nottagutter are:

Positive DC battery/inverter busbar with five 5/16" diameter studs locatable on either side of enclosure

Negative DC inverter busbar with four 5/16" diameter studs mounted on one half of 500 amp shunt

Negative DC battery connection on side of 500 amp shunt. Shunt may be located on either side

15 position terminal busbars for leg 1 & 2 AC IN, leg 1 & 2 AC OUT, Neutral and Ground.

Mounting embosses for AC leg 3 in and out or other insulated circuits (MNSBB)

60 amp 277VAC 2 pole bypass breaker standard

60 amp inverter AC output breakers (specify 2,4,6 or 8)

Center din rail mounts up to twelve single pole or six 2 pole breakers in any combination

Bypass slider configurable for up to four single pole or two 2 pole breakers on one side and 8 single pole breakers on the other side. The eight breakers may be AC output and AC input together. The eight breakers may also be four 2 pole breakers.

Four Ultralite E-Panels can mount to each Nottagutter for OutBack, Magnum and Apollo inverters.

Up to two Sunny Island inverters accommodated easily

175 or 250 amp inverter breakers may be installed in each end of the enclosure

Right and Left hand charge control brackets may be installed in each end of the enclosure

Six position din rail included that can mount in one of the DC positive busbar locations
Knockouts for single charge controller on the side in the middle of enclosure
Knockouts on top and bottom surfaces to match up with Ultralite E-Panels and battery conduit connections

